



# ArenaVision LED gen 3.5

## Empowering venues to offer immersive experiences



# Contents

1. Meet ArenaVision LED gen3.5
2. Product overview
3. Application areas
4. Service tag
5. Dimensional drawings
6. Product specifications



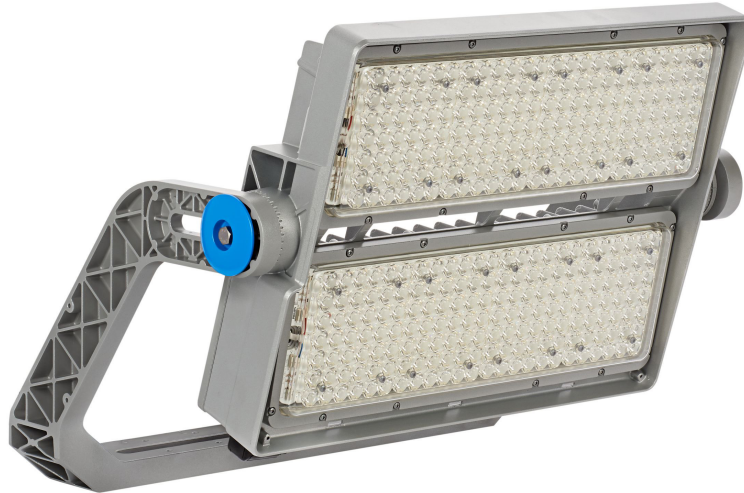
# Trends in arenas and sports lighting

- **The ultimate customer experience:** Arena owners want to create a carefree atmosphere and an enjoyable show
- **Environmental awareness:** Both architects and arena owners consider sustainability as a key component when developing new venues
- **Venue flexibility:** Venue owners aim to create multipurpose venues ideal for other activities (e.g. concert, conferences)
- **Operational efficiency:** Clubs and owners are aiming for cost reductions which can be applied with an efficient lighting system

# ArenaVision LED gen3.5



**BVP428**



**BVP418**



**EVP400  
DMX driver box**

# Driving differentiation

Higher flux and optical choices, leading to lower quantities, total weight of installation and TCO

Inbuilt tilt of 5° of housing, leading to lower tilt and SCx values

Simplified internal wiring from LED board to connection box



- Source lumen output of up to:
- CRI70/5700K: @T35 259,000 lm
  - CRI80/5700K: @T35 247,000 lm
  - CRI90/5700K: @T35 194,000 lm

Single piece die-cast housing with integrated connection box and self retaining screws

Both symmetric and asymmetric optics for better comfort and low glare for lower mounting height

# Key benefits of ArenaVision LED gen3.5



**Flexibility**



**High level of  
efficiency**



**Future-proof**



**Easy to install  
and maintain**

# Flexibility

- Choice of different CCT, CRI and TLCI for broadcasting, non-broadcasting lighting compliance, and the needs of different sports venues
- A wide choice of dedicated optics and beams (asymmetrical and symmetrical) ensures optimal solutions for multiple sports – even at lower heights
- Choice of external accessories to reduce glare and spill light for increased spectator comfort
- Flexible mounting solution with IP66 driver box
- Separate for use at a distance from the floodlight (BV version), or pre-fixed onto the mounting bracket of the floodlight (HGB version) to optimize wiring cost



0° tilt asymmetrical optical choices for lower mounting height stadium to increase spectator comfort

External louvers



# High level of efficiency

- Provides maximum and constant light output, while ensuring effective thermal management, maximizing lifetime and minimizing maintenance costs
- Optimized light output from the product for different ambient temperature, CCT and CRI
- Ideal 1:1 replacement for existing conventional lighting





# Future proof

- DMX drivers enable upgrade to Interact Sports
- DMX driver box meeting the highest performance standards enables the luminaire interacting with lighting dynamic control system
- DMX-RDM connectivity enabling full control system package

# Easy to install and maintain

- No wiring between driver box and luminaire
- Service tag: Class-A serviceability with changeable PCBs
- Ease of installation/cabling for lower initial costs

# Application areas

## Outdoor arena:

- Heights from 10 m to 60 m
- 1<sup>st</sup> class arenas – FIFA/IOC events
- 1<sup>st</sup> league stadiums and racing tracks: football, rugby, tennis, hockey, F1 racing, etc.

## Indoor arena:

- Heights from 10 m to 25 m
- Swimming pool, velodrome, basketball, etc.

## Multipurpose arena:

- Heights from 10 m to 40 m
- Multiple sports, social and cultural events, etc.



# Interact for smart lighting

With Interact, it's easier than ever to realize the benefits of smart lighting: higher energy savings, improved space utilization, greater well-being and employee productivity – and a big step towards achieving sustainability goals.

## General benefits

- No additional (DALI) control wires needed
- Perfect for projects of any size
- Quick to install and ready to use in a few clicks

## Sustainable

- Sensor-enabled motion and daylight harvesting for instant energy savings
- Interact is part of our lighting for circularity offer

## Smart

- Benefit from remote control and monitoring and reporting capabilities
- Use data to make better informed decisions more quickly

## Efficient

- Collect actionable space analysis data
- Be informed of issues to enable timely and cost-efficient maintenance

[Discover Interact for sports](#)

This is all you need for your smart lighting system



ArenaVision LED gen3.5  
with integrated sensor



Software applications

# Signify Service tag

- A unique QR code-based LED luminaire asset identification system
- Providing detailed information on specification and spare parts, simply by scanning the code on the packaging or luminaire with the Signify Service tag app.
- The system simplifies the installation and maintenance of lighting infrastructure by utilizing cloud technology.
- Service tag also plays a key role in the circular design of our lighting solutions, as it extends their service life and reduces maintenance efforts, ensuring efficient servicing and avoiding waste.



## Your benefits at a glance:



Easy installation  
and commissioning



Simplified  
maintenance



Asset  
management

Learn more at [signify.com/global/service-tag](https://www.signify.com/global/service-tag)

# Signify Service tag: Installation



## #1. Download the app

Download the Service tag app from the App store or Play store on your mobile device (iOS or Android).



## #2. Register the luminaire

Register the luminaire by simply scanning the QR code on the packaging or luminaire. The system automatically identifies the type of each luminaire.



## #3. Create a group QR code

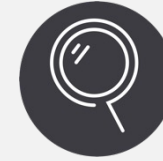
If you have multiple luminaires, it's possible to use the Service tag app to combine individual luminaires into a group. Each group will have its own unique group QR code.



## #4. Luminaire information

Scan the QR code on your luminaire for easy access to the installation manual.

# Maintenance



## #1. Spare parts identification

Use the Service tag app to view a luminaire's spare parts, which contains all necessary information for quick ordering.



## #2. Spare parts programming

Quickly program a spare driver using the Service tag app—without needing a faulty driver on hand. Scan the QR code of a luminaire with your device, put your mobile device on the spare driver, press “Program” and the spare driver receives the right settings for this specific luminaire.



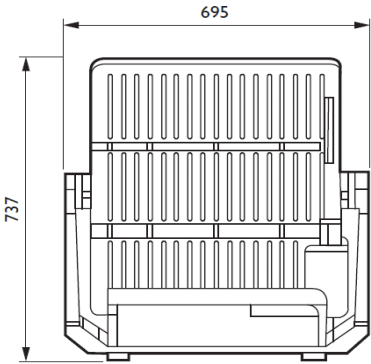
Learn more at  
[signify.com/global/service-tag](https://signify.com/global/service-tag)

©ignify

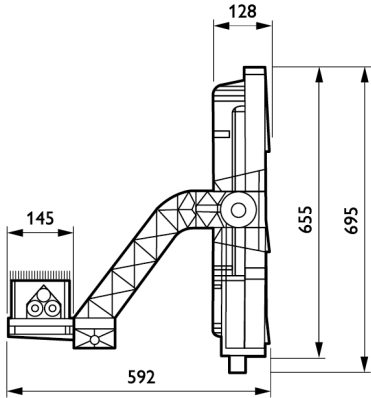
©signify

# Product specifications

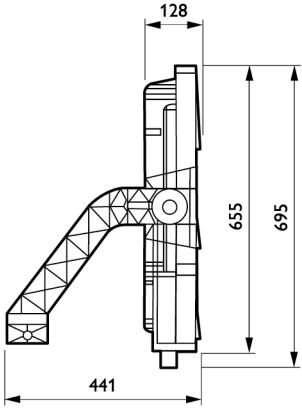
# Dimensional drawings



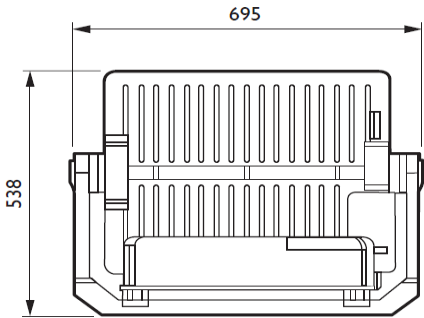
BVP428



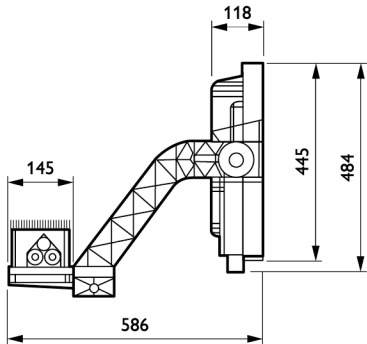
HGB



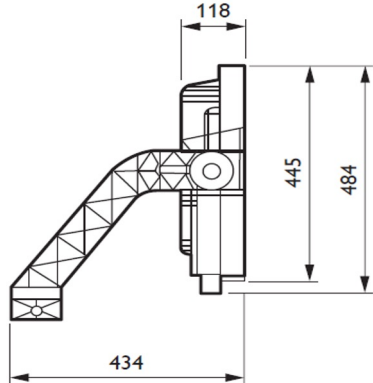
BV



BVP418



HGB



BV

# Product specifications

Luminaire types	BVP418 (2 LED engines) / BVP428 (3 LED engines)
Luminaire versions	BV: Basic version (separate driver box) HGB: Housing gear box (driver box pre-fitted on the mounting bracket) in a box
Driver box type	EVP400 (DMX-RDM version)
Source light flux (T <sub>a</sub> dependent)	<ul style="list-style-type: none"> <li>Up to 194,000 lm (BVP428; CRI &gt;90; TLCI&gt;90; R9&gt;50)</li> <li>Up to 222,000 lm (BVP428; CRI &gt;85)</li> <li>Up to 247,000 lm (BVP428; CRI &gt;80)</li> <li>Up to 259,000 lm (BVP428; CRI &gt;70)</li> <li>Up to 129,000 lm (BVP418; CRI &gt;90, TLCI&gt;90; R9&gt;50)</li> <li>Up to 147,000 lm (BVP418; CRI &gt;85)</li> <li>Up to 165,000 lm (BV418; CRI&gt;80)</li> <li>Up to 172,000 lm (BV418; CRI&gt;70)</li> </ul> (tolerances on light flux: +/- 7%)
System power	Up to 1,500 W (BVP428) / Up to 1,000 W (BVP417) (tolerances on system power: +/- 10%)
Luminaire efficacy	Up to 149 lm/W (depends on floodlight's T <sub>a</sub> dependent version and CRI)
Correlated Color Temperature (CCT)	Cool white (CW) 5700 K (tolerances on CCT: +/-400 K)

Color Rendering Index (CRI)	Min: 90 / min: 85, typical: 90 / min: 80 / min: 70
TLCI per color code	93 (CRI>90) / 87 (CRI>85, typical 90) / 72 (CRI>80) / 46 (CRI<70)
SDCM (MacAdam ellipse)	< 5
Percent flicker factor	< 1% (measured with flicker meter ARRI Light Analyzer P.R.O.F.)
Light distributions / optics	From 2 × 6° to 2 × 19° / 7 symmetrical optics / 4 asymmetrical optics
Operating temperature range	-40°C up to +45°C (depends on floodlight's T <sub>a</sub> dependent version)
Electrical insulation class	Class I
Degree of Ingress Protection	IP66
Luminaire dimensions (L × W × H)	737 × 695 × 128 mm (BVP428) / 538 × 695 × 118 mm (BVP418)
Driver box dimensions (L × W × H)	500 × 145 × 120 mm

# Product specifications

Luminaire weight	BVP418 (BV): 21 kg BVP418 (HGB): 27 kg BVP428 (BV): 25 kg BVP428 (HGB): 31 kg
Driver box weight	5.3 kg
Luminaire windage area (SCx)	BVP418 (BV: 0.10 - 0.34) (HGB: 0.18 - 0.33) / BVP428 (BV: 0.12 - 0.48 ) (HGB: 0.20 - 0.47)
Material / finishing	<ul style="list-style-type: none"> <li>Housing/ electrical connection box / mounting bracket: PDC molded aluminum</li> <li>End caps: PDC aluminum in blue color</li> <li>Plastics / cables: UV-protected</li> <li>Standard raw aluminum color. Optional dark grey RAL 10714 for housing, bracket and front face</li> <li>Driver box is always painted in raw aluminum color (other paint colors are not possible)</li> </ul>
Driver box mains input	Optional 200 - 220V/50-60Hz* or 230-400V/50-60Hz (tolerances on mains supply voltage fluctuations: -/+ 10%) (*only for Japan version with longer lead time)

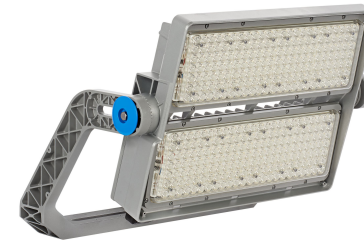
Power factor	> 0.95 at full power
Surge protection	10 kV standard (driver integral)
Life-time / Lumen maintenance	L94B50 100,000 hours
Driver box lifetime / Failure rate	50,000 hours at operation temperature range / 0.5% per 5000 hours
Luminaire installation	<ul style="list-style-type: none"> <li>Outdoor: on mast-head frame/wall/catwalk or indoor: on roof or ceiling/wall or catwalk</li> <li>U-shaped mounting bracket with foot-print suitable for 3-point fixation by means of M20 bolts</li> <li>Vertical aiming from the horizontal: -90° / +90° (not suitable for uplighting, side lighting, refer MI sheet)</li> <li>Standing-up or hanging-down mounting</li> </ul>
Driver box installation	<ul style="list-style-type: none"> <li>Indoor/outdoor open air without need of cabinet or inside electrical cabinet (IP54) or inside electrical room</li> <li>Either pre-fitted on the luminaire (HGB version) or remotely at max 200 m distance to luminaire</li> <li>Fixation on flat surface by means 4 standard screws/ bolts thru the key slot holes</li> <li>Universal fixation position (cable glands never upward for outdoor)</li> </ul>

# Product specifications

Luminaire electrical connection / cabling	Luminaires are always supplied with electrical connection box pre-fixed enabling wiring between floodlight and driver box
Driver box electrical connection / cabling	<ul style="list-style-type: none"> <li>• Mains input: screw-less terminals for wires up to 4mm<sup>2</sup>/ cable entry via 1×M25 cable gland accepting cable diameter between 13 and 18 mm (no thru-wiring in/out)</li> <li>• Output to luminaire: screw-less terminals for wires up to 2.5mm<sup>2</sup>/ cable entry via 1×M25 cable gland accepting cable diameter between 13 and 18 mm</li> <li>• Cable to luminaire (BV version luminaire): one cable of 7-core (8-core for distance &gt; 50m) at length of customer choice (cables are not supplied by Signify)</li> </ul>
Luminaire accessories	External spill-light control louvre Precision aiming device (optional)
Optional versions	CLO / indoor swimming pool protected (SWP) / marine salt protected (MSP)
Certification / listing	CE, CB, ENEC, ENEC+, VDE-Ball proof, Zhaga-D4i
Packaging content	Contains floodlight and driver box either pre-fitted (HGB) or separate (BV). Driver box of BV version contains a suspension kit with its fixing parts



BVP428



BVP418



EVP400  
DMX driver box

# You and Signify – a reliable partnership

Signify is the world leader in connected LED lighting systems, software and services. We proudly bring to market the best lighting brands in the world, including Signify, Philips and Interact.

We believe in close cooperation before, during, and after every project. Our local teams provide the support and information you need—with flexible, on-time delivery and reliable product availability.

To help you stay ahead, the [Signify Lighting Academy](#) offers a comprehensive range of educational resources to grow your expertise and earn certification.

Get more info on our products, services and tools:

[signify.com/installer](https://www.signify.com/installer)

[signify.com/specifier](https://www.signify.com/specifier)

## Our global brands

 Signify

Signify represents our commitment to sustainable innovation. As our leading brand for connected lighting systems, luminaires and components for the specification project business, Signify solutions serve the segments where we collaborate most closely with our customers.

 Signify interact

Signify Interact is our IoT software platform for managing smart lighting systems and unlocking the value of the data they collect. Easy to install and configure, Interact supports a wide range of applications—from small offices to entire cities.

**PHILIPS**

Philips stands for quality and energy efficiency in lighting. It is our leading brand for innovative, off-the-shelf lighting products for professionals and consumers alike.

# Get into pole position with high-performance, energy-efficient LED



Signify is Official Lighting Partner of  
Mercedes-AMG PETRONAS F1 Team

 Signify



Official Lighting Partner

 AMG  
PETRONAS  
FORMULA ONE TEAM

**@signify**

the meaning of light