

Five lighting trends for 2022



Lighting has changed a lot over the last decades. Today, it does not only provide light but contributes to more sustainable, cost-efficient and personalized spaces. **Lighting got smart – and will get even smarter with these 5 key trends for 2022.** Get to know them and learn how they will impact your business and your customers’ needs.



#01

EU legislation

The EU is convinced of the many benefits of LED and is putting them in the spotlight: With the implementation of the EU Ecodesign Regulation and the new RoHS (Reduction of Hazardous Substances) directive, EU countries will phase out numerous conventional light sources to switch to more environmentally friendly, energy efficient lighting.

Signify helps you to offer your customers the perfect solution: with Philips LED lighting for efficient replacement. **It’s time to switch to LED – powered by the EU.**

Smart lighting allows to automate lighting, personalize light settings and capture data to optimize operations. In this way, it helps provide your customers with a comfortable working environment, while boosting energy savings. **The Interact system offered by Signify** allows for an easy step into smart lighting and can be upgraded any time, providing access to even more benefits.

But did you know that it can also be profitable for your business?

- When combined with a gateway, you get access to data from the smart lighting system that allows you to track its functioning and energy usage.
- This information is very useful for your service agreements with customers after installation.
- Alert messages on faults, and remote access to real-time data help you reduce the cost to serve your customers and minimize downtime at the same time.

#02

Smart lighting



Our global brands:

PHILIPS

interact

#03 Human-centric lighting

Lighting has a profound effect on people. The reason is simple: light is the most powerful regulator of the 'circadian rhythm' – our so-called biological clock. Light has a visual quality (that makes us see well), a biological quality (that makes us perform well), and emotional benefits (that make us feel well). The combination of these elements is essential for people's wellbeing and the foundation for human-centric lighting.

Signify Lighting for Wellbeing combines high-quality Philips LED lighting with the capabilities of the smart system Interact. For lighting solutions that offer benefits for people, businesses and the environment!



Build well

Increase the commercial appeal of any building while minimizing energy consumption. Help building owners meet criteria to receive a WELL Building Certification.



See well

Improve comfort and light levels with Philips LED lighting that holds up to the highest standards.



Feel well

Lead the way to healthy, more engaging workspaces with lighting that offers more personal control.



Perform well

Help everyone thrive at work with the right light at the right time during the day.

#04 Renovation wave

When the pandemic arrived, Europe's economy was hit severely. To accelerate economic recovery and to help address long-term climate change at the same time, the European Commission approved the **European Green Deal** in 2020. The Green Deal consists of a set of policy initiatives to help the EU achieve the ambitious goal of becoming carbon neutral by 2050.

One of the ways to achieve this is through **funding renovations and new lighting projects** that use energy efficient LED and connected lighting solutions. These subsidies will potentially double the building renovation rate and thus could be interesting for your business!

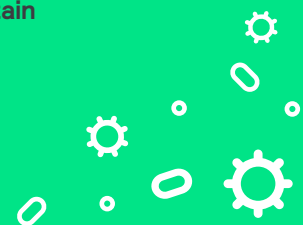


#05 Indoor air quality

There is a growing consensus that the primary route for COVID-19 infection is airborne. Improving indoor air quality and ventilation is therefore one of the most effective ways to reduce the risk of coming into contact with harmful pathogens.

Offer your customers Philips UV-C luminaires offered by Signify to help create the required levels for air and surface disinfection:

- **Effective against viruses¹ and bacteria²**
- **Cost efficient to install and maintain**
- **Easy to apply³ by professionals**
- **Designed with safety in mind**



Discover how our lighting solutions can help you and your customers to **profit from the 2022 key lighting trends.**

Find all you need on [signify.com/installers](https://www.signify.com/installers)

¹ McDevitt et al., 2012; C.M. Walker and G. Ko, 2007 and C.V. Beggs and E.J. Avital, 2020

² Mphahlele M. et al., 2015

³ Supported with our mounting instructions and commissioning guide