



Inspirations Guide 2023/24

PHILIPS

interact

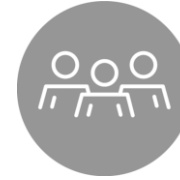
PHILIPS
hue personal
wireless
lighting

MODULAR
LIGHTING —
INSTRUMENTS

COLORKINETICS



About



Brands



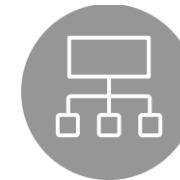
Innovations



Applications



Services



Tools and Support



About



Our purpose is to unlock
the extraordinary potential
of light for brighter lives
and a better world

A wide-angle photograph of a large, ornate bridge at night, illuminated with warm yellow and orange lights. The bridge spans a body of water, and its reflection is visible. In the background, several tall city buildings are lit up against a dark blue night sky. The overall scene is vibrant and urban.

Our company

Number One
In conventional and
connected lighting,
and LED

100+ million
Connected light
points

7.5 billion
Euro Sales in 2022

100% Carbon neutral
Global Operations

A company with purpose

Signify is the world leader in lighting. We provide our customers with high-quality, energy-efficient lighting products, systems and services.

We leverage 130 years of leadership in lighting to create dynamic, innovative and human-centric projects. By turning light sources into data collection points, we can connect more devices, places and people through light, contributing to a safer, more productive and smarter world.

Key Milestones



PHILIPS
1891

The conception of Philips

Philips & Co was founded in 1891 in Eindhoven, the Netherlands, by Frederik Philips and his son, Gerard. The pair soon conceived a bold but timely plan: cost-effective, reliable electric incandescent light bulbs.

1907

Philips began production of tungsten filament lamps



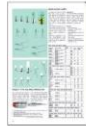
1913

Start of production of gas-filled incandescent lamps



1917

Neon glow lamps
The first Philips-produced gas-discharge lamps



1924

Philips creates the Duplo car light, combining two bulb filaments in one, one for the main beam and the other for the dipped beam



1931

Philora sodium lamp
Famously introduced by lighting a 16km stretch of the road between Beek and Geleen in Holland - the world's first sodium streetlighting installation



1945

Infraphil infrared lamp
Incandescent light bulbs and armatures that provided muscle pain relief through deep heat penetration



1967

SON-lamp
High pressure sodium lamp



1915

Arga-lamp

Philips introduced light bulbs filled with argon, which resulted in a longer lifetime for the filament



1925

Metalix- X-ray tube

The Metalix was the first X-ray tube with a metal housing to provide protection against harmful X-ray radiation



1939

Start of production of low voltage fluorescent tubes (TL)



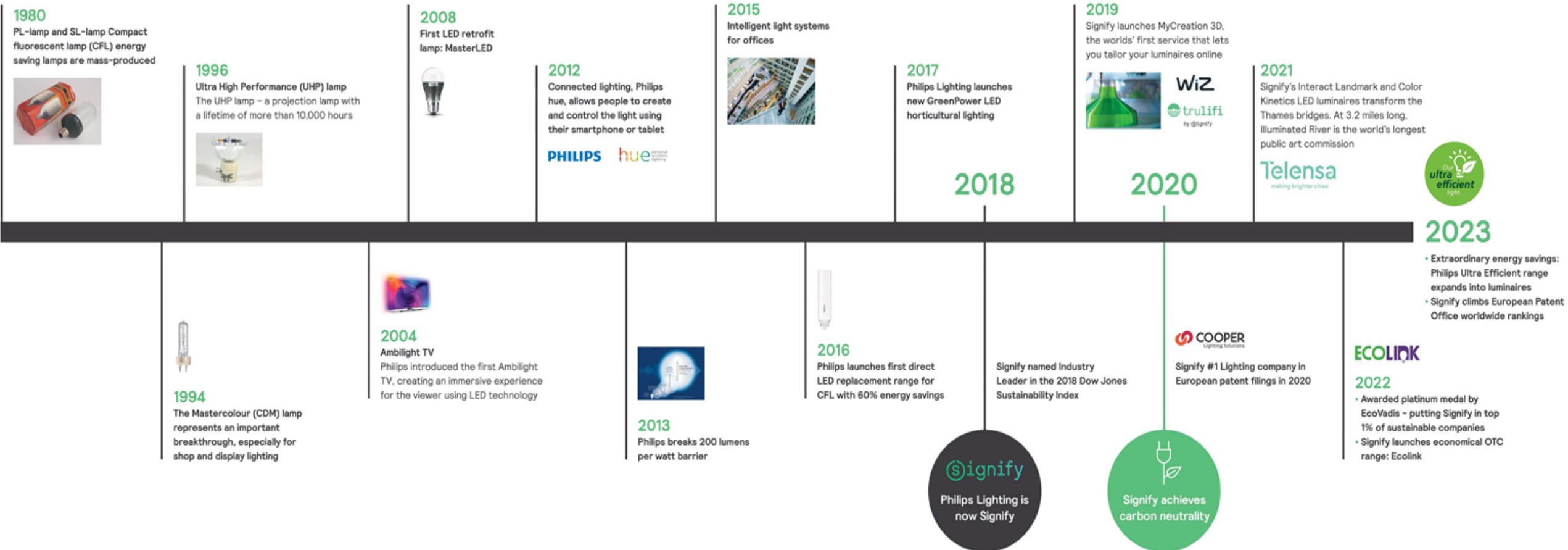
1962

Halogen lamp

1970

Duplo halogen car-lamps (H4)

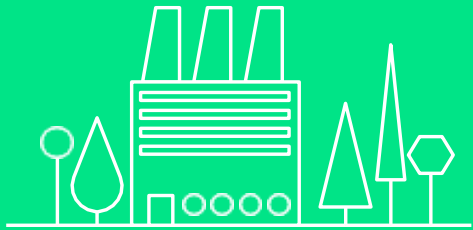
Key Milestones



Brighter lives, better world

Signify Sustainable portfolio and operations

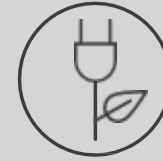
100% carbon neutral in 2020



2017 – 2021

#1 Industry leader, 'Electrical Components and Equipment' category, Dow Jones Sustainability Index

2019 "A" Rating by Carbon Disclosure Project for 'Climate' and 'Supply Chain'



84% sustainable revenues



100% renewable electricity



Zero waste to landfill since 2020



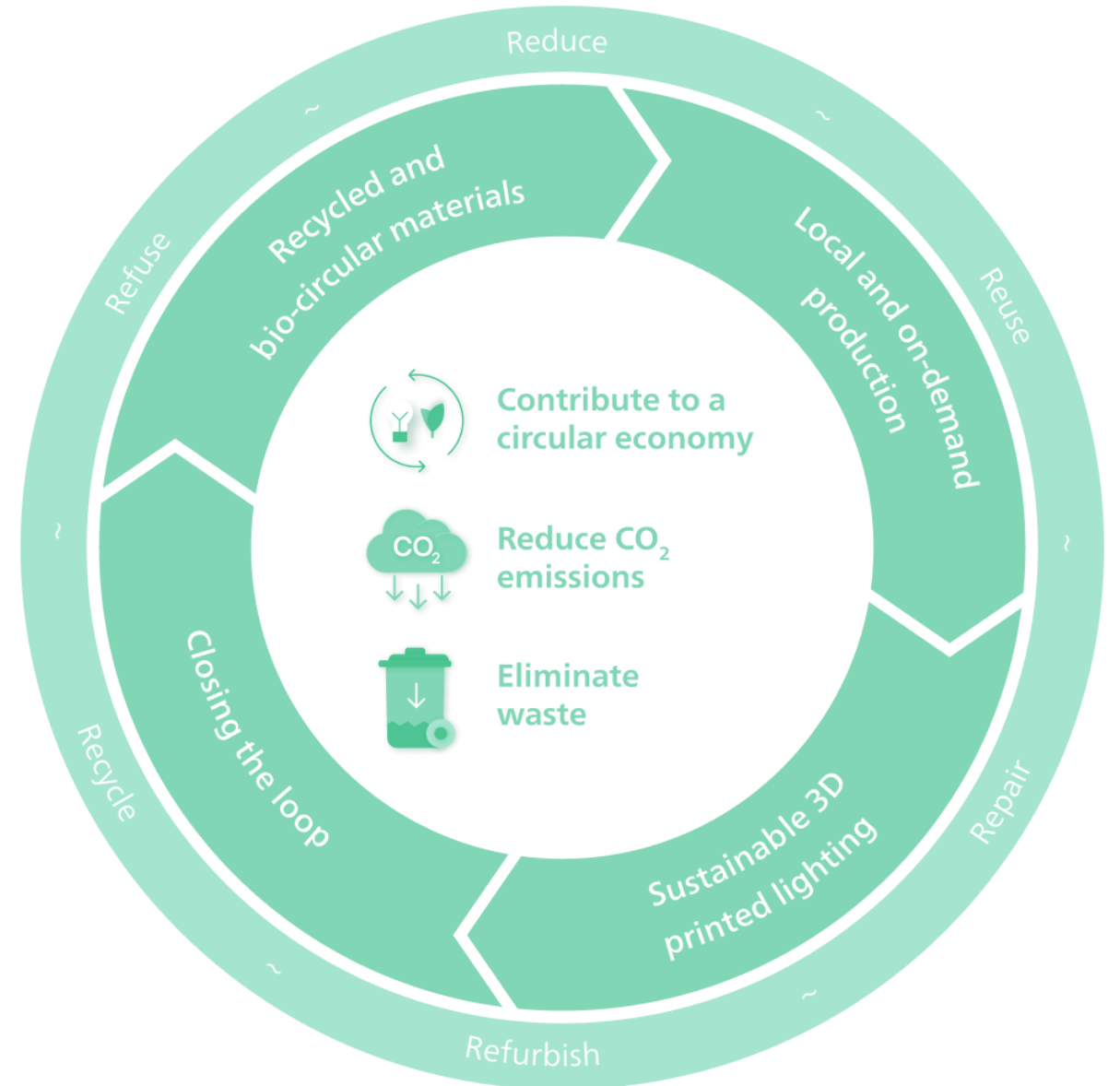
99% sustainable supply chain



Rethinking our production for a brighter future

Our ambition is to become truly circular in our activities.

- We have reduced our **CO₂ emissions** as a vital part of our efforts to combat climate change.
- Our **Circular revenues** will double to 32% by 2025.
- Our **serviceable luminaires** are upgradable, serviceable, reusable and recyclable
- We are embarking on **remanufacturing** projects in the UK&I





Brands



Brands

Signify proudly
markets the best
lighting brands in
the world

PHILIPS

interact

 **COLOR
KINETICS**

 **MODULAR
LIGHTING —
INSTRUMENTS**

PHILIPS
hue personal
wireless
lighting

PHILIPS
dynalite 

NatureConnect
by 

PHILIPS
MYCREATION

BrightSites
by 

Brand Positioning



We have thoroughly evaluated our brands and product lines to ensure that we have the strongest, most relevant, and most robust portfolio to serve our customers. Each brand represents a distinct position in the market. Our focused approach brings clarity in brand positioning and ease in the selection process. This Inspirations Guide showcases the luminaires and systems from our specification brands.

PHILIPS

Our global brand in professional and consumer lighting



The Philips brand stands for quality and energy-efficiency in light. For over 125 years, Philips lighting products have been at the forefront of innovation. Today Philips is recognised as the leading brand in lighting. Our Philips portfolio includes many innovative sub-brands like Philips Hue for smart homes and Philips Color Kinetics for LED lighting systems.

Visit the [Philips Lighting](#) website





Remarkable lighting Sustainably printed

Signify enables customers to custom-design or tailor their luminaires. Create special designs adapted to your concept with the world leader in lighting. Iconic, decorative, and functional. Imprint logo or brand elements. We are here to think, sketch and select with you.

Visit the [Philips MyCreation](#) website



interact

Our Internet of Things platform and connected lighting systems



Interact is our secure, scalable IoT platform that collects and shares data back and forth between connected light points, sensors and devices embedded in Interact connected lighting systems.

Interact enables you to benefit from edge technologies, big data processing and analytics, and machine learning.

Visit the [Interact](#) website





Our global brand in connected lighting control solutions

Philips Dynalite has empowered smart buildings across the globe for over 35-years with its suite of connected lighting control solutions. More than just lighting control, the Dynalite System offers all the powerful integration tools you need to bring your next project to life. Suitable for any project, in any industry, at any scale, this innovative system will help you to transform environments and **enhance people's lives.**

Visit the [Philips Dynalite website](#)



PHILIPS

hue personal
wireless
lighting



Our personal wireless lighting system that brings your smart home to life

Philips Hue is your personal connected lighting system. It lets you create the right lighting ambience for every room and every moment. Switch the light on and off using an app or through voice commands. Bring your smart home to life with the most connected light in the world.

Visit the [Philips Hue](https://www.philips-hue.com) website



Our global provider of comprehensive architectural lighting solutions

Color Kinetics has been transforming environments with innovative LED lighting solutions since 1997. During that time we have developed an indoor portfolio and lit some of the world's most recognizable landmarks with dynamic LED solutions.

Visit the [Color Kinetics](#) website





Our international brand in architectural lighting



Through gutsy campaigns, bold designs and innovative technology, Modular Lighting Instruments have been pioneering architectural lighting with an attitude for nearly 35 years. Always anticipating new trends, Modular offers high-end products with cutting-edge technology that stand out from the crowd.

Visit the [Modular](#) website





Innovations



Tailored luminaires for a circular economy

Sustainable 3D printing solves 3 major sustainability challenges

- by contributing to the circular economy
- reducing CO2 emissions
- and eliminating waste.

We print our lamps locally. And only to order. With materials from at least 55% recycled or renewable sources. We also release special editions made from reused materials that would otherwise be thrown away. Like old fishing nets and water cooler bottles.

[Visit our 3D print website](#)



NatureConnect

NatureConnect combines various LED luminaires – Daylight, Skylight and Lightscape – with intuitive control to create lighting scenes tailored to people's needs, based on proven and valued natural experiences:

- Supporting our natural rhythm
- Providing a view to the sky
- Being immersed in nature

[Visit the NatureConnect website](#)



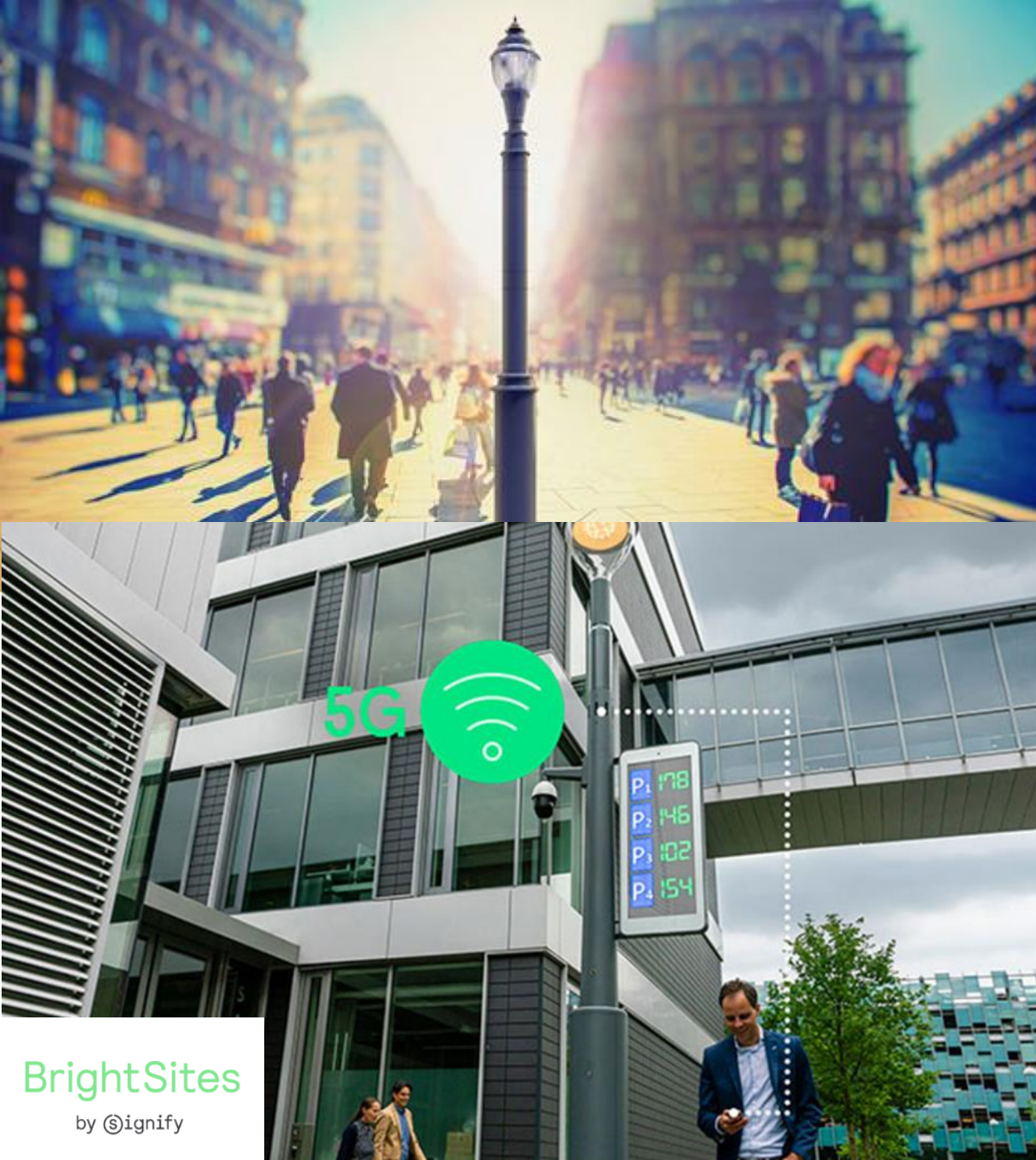


BrightSites

BrightSites smart poles and luminaires by Signify turbocharge cities' infrastructure.

The digital transformation of public spaces is accelerating rapidly. Yet most components of a city's digital backbone are insufficient to meet the modern connectivity needs of today and tomorrow. The BrightSites smart poles and luminaires from Signify, offer an all-in-one solution – providing a broadband connectivity, 4G/5G and WiFi infrastructure, as well as a platform for number of IoT applications. All this, while maintaining the aesthetics of the urban environment.

[Visit the BrightSites website](#)





Solar Street Lighting

As the world aims to reduce its carbon footprint, solar lighting provides a sustainable solution.

Hybrid solar opens new opportunities in Northern Europe. It gives organisations an opportunity to reduce their carbon emissions and generate renewable energy.

Solar Lighting solutions are now available within our road and street lighting portfolio.

[Learn more about Solar](#)





ClearField

Philips ClearField LED lighting has been used in research on the response of bats to different light spectra, and was proven not to disturb the habitat of light-shy bat species at night.

For the study which started in 2012, the Netherlands Institute of Ecology (NIOO-KNAW) and Wageningen University worked closely together with Philips Lighting to research how bat species react to different light colours in their natural habitat.

ClearField is now available within our road and street lighting portfolio.

[Learn more about ClearField](#)



Horticulture

Natural light often falls short on giving crops what they need to grow and flourish. With Philips professional LED grow lights, you can control many aspects of crop growth to get better business results. Whether you produce vegetables, fruits or flowers – in a greenhouse, vertical farm or other indoor facility – we offer a choice of the best LED grow lights for your specific crop. Our tried and tested horticulture LED grow lights can help you increase yields, quality and consistency of your crop.

[Learn more about Horticulture](#)



Aquaculture

According to the UN, nearly 90% of the world's marine fish stocks are now fully exploited, overexploited or depleted.

Philips Aquaculture lighting addresses the specific needs of hatchery and grow-out sites either on land or offshore and have been developed in close collaboration with leading universities and institutes. Our lights incorporate the most advanced LED chipsets and controls with the finest marine grade materials ensuring durability under the toughest conditions.

[Learn more about Aquaculture](#)



Applications

A photograph of Edinburgh Castle at night, illuminated with warm yellow lights. The castle's stone walls and towers are visible against a dark blue sky. The foreground shows a grassy area and a stone wall.

Our professional
lighting portfolio
covers all indoor &
outdoor applications

Professional Luminaires

Our professional lighting brands start with our customers. We understand how light affects people and how the right light can make people happier and more productive. Everything we do is designed to have a positive impact on people's lives and add sustainable value to your business.



Applications



Office



Industry



Healthcare



Retail



Hospitality



Residential



Outdoor



Architectural



Sports

Office



Office Lighting Overview

Businesses today are exploring new ways to enhance employee productivity and well-being, while maintaining a focus on energy savings, improved operational efficiency, and space optimization. Philips LED lighting supports sustainability goals and occupant well-being, while our connected lighting systems provide a firm base for the growing push towards smart buildings. Data-driven insights gathered from the connected lighting network optimize service delivery and operations, improve workplace design, and positively impact employee experience.

The challenges of prioritizing well-being in the workplace

Although most businesses understand the idea behind a workplace that prioritizes well-being, there are challenges involved in creating one.

Maybe the biggest obstacle is the size of your space. You may want to introduce more natural light or have custom built rooms for different work activities – yet the building's physical dimensions can be restrictive.

Light is key

Human beings have evolved to follow the natural rhythm of light throughout the day, with our emotional well-being and sleep patterns closely tied to our exposure to sunlight. This cycle is known as the circadian rhythm.

Thanks to the modern working world, we now spend around 90% of our time indoors.

If you are not able to redesign the structure and shape of the working environment, the goal should be to focus on the most effective changes possible. These can include things such as better seating, noise reduction, temperature management and light.

Not only does this interrupt those natural processes⁵, but indoor lighting is usually constant and fixed – unlike the natural variations in sunlight throughout the day.

Light has a physical effect on the body. There are three key ways it affects us:



Visual

Good quality of light is essential for the workplace. The right amount of light – with minimized glare, and optimized light distribution together with high color quality – enables people to focus better, especially in professions where being able to see clearly is crucial, such as architecture or medicine.



Biological

Thanks to scientific research and discovery throughout the 20th century, we know that our circadian rhythm is closely linked to contact with natural light. Throughout the day we are exposed to different levels and colors of light, with this affecting our concentration, energy and sleep quality.



Emotional

Different levels and colors of light exposure can significantly impact on our emotions. Cool white light can help people concentrate better and warm white light has a relaxing impact. What's more, when people have direct control over the lighting they are working under, they also feel more comfortable and experience less stress.



Signify office lighting solutions

Lighting can enhance your workplace in several ways. From maximizing energy savings and compliancy, improving employee comfort, to managing occupancy and daylight levels with connected systems.

Signify can help. We take your office lighting to the next level by prioritizing employee well-being.

Lighting has a profound effect on the human body. It's more than just how we see; it also affects how we feel and how we function.

Meet Signify's office lighting solutions:

Optimize your operations with easy-to-use, easy-to-install wireless automation system Spacewise.

Enhance the performance of your building and increase engagement and well-being of users with our cloud-based Interact Office system.



Hardeman BV Veenendaal, the Netherlands

The employees of Hardeman BV can experience the benefits of daylight even when they are in the middle of their newly build office. NatureConnect lighting is enhancing their spaces with a view to the sky for a feeling of spaciousness and connection to the outdoors. The NatureConnect lighting solution brings the benefits of natural light indoors for comfortable, engaging, and attractive environments. A corridor full of Skylights reconnects employees and visitors to the outside even when being in the middle of the building.











Office



Recessed



PowerBalance gen2
(Tunable White)



PowerBalance gen2
Rectangular



PowerBalance
RC360B



TrueLine
Recessed



FlexBlend
Recessed (600x600
& 150x1200mm)



SlimBlend
Recessed (600x600
& 300x1200mm)



CoreLine
Recessed (600x600
& 300x1200mm)



CoreLine
Panel (600x600 &
300x1200mm)

Surface



PowerBalance
Surface Mounted



SmartBalance
Surface Mounted



TrueLine
Surface Mounted



KeyLine Black
Surface Mounted



KeyLine White
Surface Mounted



SlimBlend
Surface Mounted



FlexBlend
Surface



OneSpace (inc
Tuneable White)

Suspended



TrueLine
Suspended



SmartBalance
Suspended



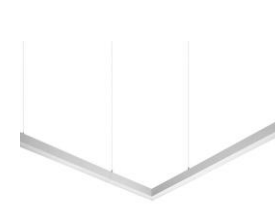
SlimBlend
Suspended



FlexBlend
Suspended



KeyLine
Suspended



KeyLine Suspended
With L-corner
SM350X



CoreLine
Panel Suspended

Office



Recessed



Drupl 70 Curved
(Office Compliant)



Drupl 70 Sharp
(Office Compliant)



Drupl 70 Straight
(Office Compliant)



Flat Moon Eclips
(Recessed)

Downlights



GreenSpace
Perfect Fit



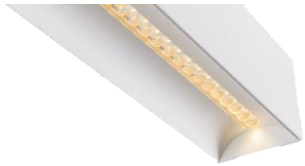
LuxSpace UGR19



GreenSpace UGR19



Surface



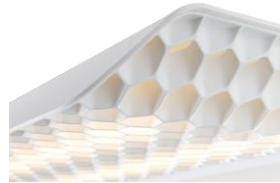
Drupl 70 Curved
(Office Compliant)



Drupl 70 Sharp
(Office Compliant)



Drupl 70 Straight
(Office Compliant)



Vaeder



SLD50 Naked



Drum
Surface



Accent Cylinder
Surface



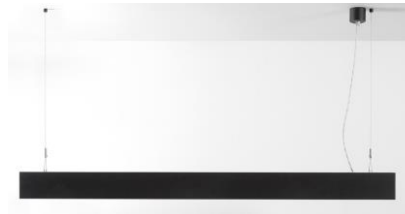
Suspended



Flat Moon Eclips
(Suspended)



Flat Moon



SLD75
(Office Compliant)



Pista track (Suspended)



Drum
Suspended



Office



Feature Lights



Grand
Series



Dome
Series



Cord
Series



Special
Editions



OneSpace



NatureConnect



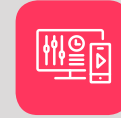


Interact Office

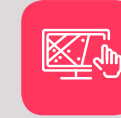
Benefits

- Optimize space utilization – with real-time and historical data on occupancy and activities
- Improve operational efficiency – with real-time system monitoring and data-rich alerts
- Enhance employee performance – use different light settings to facilitate collaboration, improve concentration, and energize employees
- Improve productivity – with indoor navigation, guidance, and intelligent resource location
- Support employee well-being – with lighting personalization, bio-adaptive lighting recipes, and environmental monitoring
- Make your workplace smart and sustainable – enable your lighting system to integrate with other building management systems, such as HVAC

Software



Scene management



Lighting asset management



Energy optimization



Lighting management



Space management



Indoor navigation



Bio-adaptive lighting



Environmental monitoring



API



Application areas

Open Plan Offices

Flexible Working Spaces

Meeting Rooms

Classrooms





Interact Office, University of Technology, Eindhoven

The vision

Built back in 1968, 'Atlas' – one of the main buildings on Eindhoven's University of Technology campus – was in need of an upgrade. The university was looking to modernize the interior while improving the way people used the space, with a focus on sustainability, cost reduction, and comfort.

The solution

With Interact Office, the university has taken a green step towards sustainability and health. The CO₂ reduction and energy savings have resulted in the award of the prestigious BREEAM Outstanding certificate, the highest attainable BREEAM category. Plus, the building's 4,000 occupants can now control the light levels in their immediate surroundings via an easy-to-use app.

Industry



Industry Lighting Overview

To remain strong in industry, you must scrutinize costs across every process. Lighting can account for up to 80% of a warehouse's energy bill, so it must be as efficient and cost-effective as possible. Longer-lasting and energy-efficient LED lighting from Philips can have an enormous impact on your bottom line, reducing operational costs through reduced downtime and lower energy consumption, keeping your employees safer on the work floor, and improving productivity.



Prologis, Europe Wide Projects

“It’s difficult to sufficiently illuminate a warehouse with twelve-meter-high ceilings and narrow aisles that swallow up light. In addition to energy efficient and sustainable lighting, we needed to have luminaires that would deliver high quality light with minimized glare.” – Magnus Thim, Property manager at Prologis.

Prologis Logistics Park in Norrköping replaced their old lighting with an energy efficient, wireless LED lighting system that now saves them more than 70% on their energy bills. This top-quality investment will pay for itself in three years.







Industry



High/Low-bay



GentleSpace
gen3



CoreLine Highbay
gen5



Ledinaire
High-bay

Light-line systems



Maxos Fusion
Trunking &
Standalone



Maxos
LED Performer



Maxos
LED



CoreLine
Trunking

Wet Room



Pacific LED gen5



CoreLine
Waterproof



CoreLine tubular
waterproof

Clean Room



Cleanroom LED
CR350 IP65 UGR19



Cleanroom LED
CR250 IP65



Cleanroom LED
CR150B IP54

Fuel Station



Mini 300 gen3
(Recessed)



Mini 300 gen3
(Surface)



Mini 300 gen3
(Floodlight)

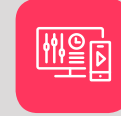


Interact Industry

Benefits

- Optimize staff efficiency and productivity – by making informed decisions about your day-to-day business operations
- Enable preventive maintenance – with system health monitoring to ensure that lighting is always functioning at its best
- Maximize energy savings – by intelligently controlling and scheduling highly energy-efficient LED luminaires
- Enhance safety – by delivering the right levels of light when and where needed
- Reduce operational expenses – with centralized lighting management and space management
- Ensure compliance and plan maintenance – with real-time, data-based insights that allow you to respond to regulatory changes or adjust layouts and logistics

Software



Scene
management



Lighting asset
management



Energy
optimization



Lighting
management



Space
management



Indoor
navigation



Application areas

Warehouses

Manufacturing Facilities





Interact Industry, Pilkington

The vision

Pilkington Automotive needed a smart lighting solution that matched its brand new, ultra-modern warehouse. The future-focused management team wanted to improve the safety of their workers while enhancing energy efficiency across the whole site.

The solution

Signify installed 1,300 Philips Maxos Fusion luminaires and state-of-the-art Interact Industry software. This helped the Pilkington Automotive team control and manage the entire lighting system while also getting detailed feedback on usage and performance.



Healthcare



Healthcare Lighting Overview

Lighting plays an important role in healthcare, improving both the patient experience and the staff's ability to provide the required level of care. LED lighting can enhance the care environment and reduce costs by saving energy and improving operational efficiency. The latest LED technology from Philips provides a nurturing atmosphere for patients and a dynamic working environment for staff.



Spire Healthcare, UK Wide Projects

The ambition of Spire Healthcare was to minimise its carbon footprint and environmental impact, as part of a broad-ranging Corporate Social Responsibility policy.

Philips provided survey, design and installation services using high-efficiency LED luminaires, and occupancy sensors in all public access areas.

The measurement of lighting energy consumption before and after the upgrade indicates an average energy saving of around 69%.





Nurse stations are often located in the middle of departments, far from windows

Lighting plays an essential role in the creation of a work environment that supports optimal comfort, alertness, and performance of caregivers.

Benefits of natural lighting are implemented in NatureConnect:

- Nurses experience optimal circadian rhythm and reduced subjective distress during night-shift work. Medication-dispensing error rates are significantly lower at high illumination level.
- Staff rated the increased natural light in the patient and operating facility as having a very positive impact on their work life.

Healthcare



NatureConnect gen2



Healthcare



Luminous Textile



Cleanroom



Healthcare



Clean Room



Cleanroom LED
CR350 IP65 UGR19



Cleanroom LED
CR250 IP65



Cleanroom LED
CR150B IP54

Downlights



GreenSpace IP54



LuxSpace IP54



LuxSpace Mini MRI-
kit



CoreLine Recessed
Spot

Wet Room



Pacific LED gen5



CoreLine
Waterproof



CoreLine tubular
waterproof

Patient Room



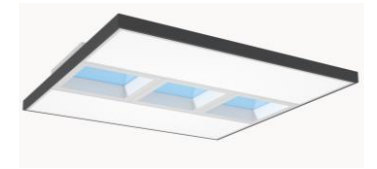
SmartBalance Wall
Mounted



Control Panels



Luminous Textiles



NatureConnect

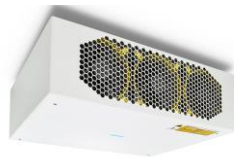
UVC Disinfection for Air Quality



Ceiling mounted &
Suspended



Wall Mounted



Active Air
(surface mounted)



Active Air
(floor standing)

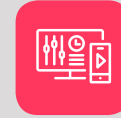


Interact Healthcare

Benefits

- Real-time operational transparency – across your entire property
- Support well-being – with sunrise-simulating wake-up lighting
- Improve operational efficiency – by integrating with HVAC, PMS, and other hospital systems
- Streamline staff operations – through a single intuitive dashboard showing patient room status
- Enhance patient experiences – with personalized, in-room experiences
- Optimize energy usage – in unused and unoccupied patient's rooms

Software



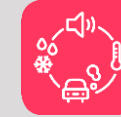
Scene
management



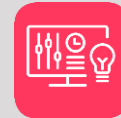
Bio-adaptive
lighting



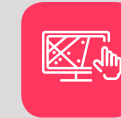
Energy
optimization



Environmental
monitoring



Lighting
management



Lighting asset
management



Space
management



Indoor
navigation



API



Application areas

Hospitals

Patient Rooms

Care homes



Retail



Retail Lighting Overview

With the right retail lighting, you can create a compelling brand identity to engage and inspire shoppers. Pull them into your store with a dynamic shop window and encourage them to browse with flexible lighting zones and displays that leave a lasting impression. Convert footfall into sales with a dressing room that gives customers control. With true white light and simple controls, Philips LED lighting gives you the flexibility and cost-effectiveness to make your business a success. We can help bring your store to life.



Marks & Spencer, UK

Fashion and food retailer, Marks and Spencer (M&S), is in the process of installing thousands of 3D printed LED luminaires from Signify in stores in the UK, including London, Manchester, Belfast, Dublin and Cork, Ireland. The project is part of a big renovation to improve store performance and generate significant energy savings. In the stores, different types of luminaires are being replaced by 3D printed LED versions. These bespoke products are sized to fit perfectly into the existing fittings ensuring the continued use of current ceiling tiles. The rollout is part of M&S's commitment to use more sustainable technologies in its stores.







Welcome

Customer Service

Flowerworld.co.uk

you for shopping at

Retail



Ambient



Maxos fusion LED



Maxos LED Performer



Maxos LED



CoreLine Trunking



StoreSet Linear



StoreSet
(Trunking &
Surface Mounted)



TrueLine (Recessed,
Surface Mounted &
Suspended)

Projectors



StoreFlow



GreenSpace Accent
Projector Mini



Coreline Projector
Gen 2



Accent
Projector

Pendants



Dome
Series



Accent
Cylinder



Drum
Series

Downlight



LuxSpace



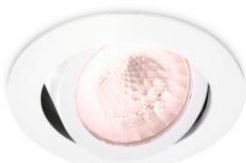
Greenspace



Greenspace
Accent Elbow



LuxSpace Accent
CrispWhite



LuxSpace Accent
FreshFood



GreenSpace Accent
Gridlight



CoreLine Downlight
GridLight



CoreLine Downlight

Retail



Decorative



Philips OneSpace



Philips NatureConnect

Retail



Projectors



Stove



Medard



Kanon



Single Square



Single Round

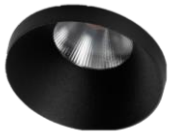


Spektra



Rektor
Semi-Recessed

Downlight



Smart Kup



Lotis Square
Recessed



Smart Lotis
Recessed



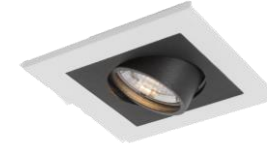
Smart Lotis (in
Smart Surface Box)



Smart Lotis (in Smart
Surface Tube)



Qbini Square Out
Trimless



Qbini Trimless



Smart Cake

Pendant



Smart Surface
Tubed



Minude



Flat Moon



SLD50 poly (Suspended)

Surface



Drupl 70



SLD50 Naked



Interact Retail

Benefits

- Run your operations efficiently and reliably – with a single intuitive dashboard for managing and monitoring lighting throughout your store or chain of stores
- Bridge online and physical experiences – with digital tools and apps that shoppers can use in store
- Drive customer loyalty and conversion – with guidance and personalized location-based offers via mobile apps
- Empower the staff – with digital tools and insights to help them work more efficiently and engage with shoppers
- Optimize store layouts – with in-depth data and analytics on shopper traffic flows and behaviors
- Trigger specific shopping behaviors – through dynamic lighting, zoning and layering light, highlighting promotional areas, and creating stimulating color combinations

Software



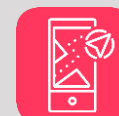
Scene
management



Energy
optimization



Lighting
management



Indoor
navigation



API

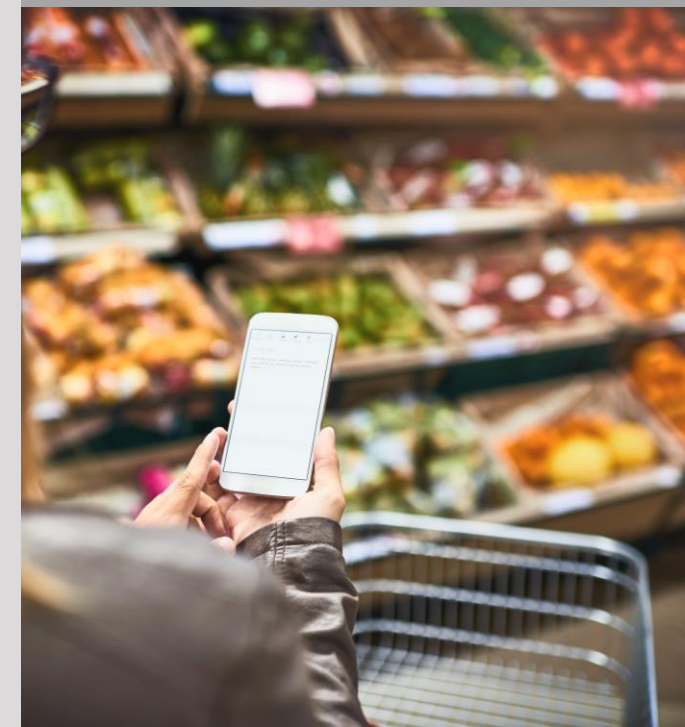


Application areas

Food Retail

Clothes & Fashion Retail

Car Showrooms





Interact Retail, E-Center, Gaimersheim, Germany

The vision

EDEKA had a clear vision for its flagship store – an imposing glass façade, varied shop architecture, and wide-ranging appeal to create a unique customer experience. These ambitions are perfectly underpinned by its lighting concept.

The solution

An EDEKA-blue strip of light in the façade greets customers. Dynamic content in the entrance area gets them in the mood for shopping. Outdoor LED lights provide visibility in the car park, lighting the way to the shop. Interact Retail software gives the store maximum flexibility, efficiency, and sustainability through the scene management, lighting management, and energy optimization applications.



Hospitality



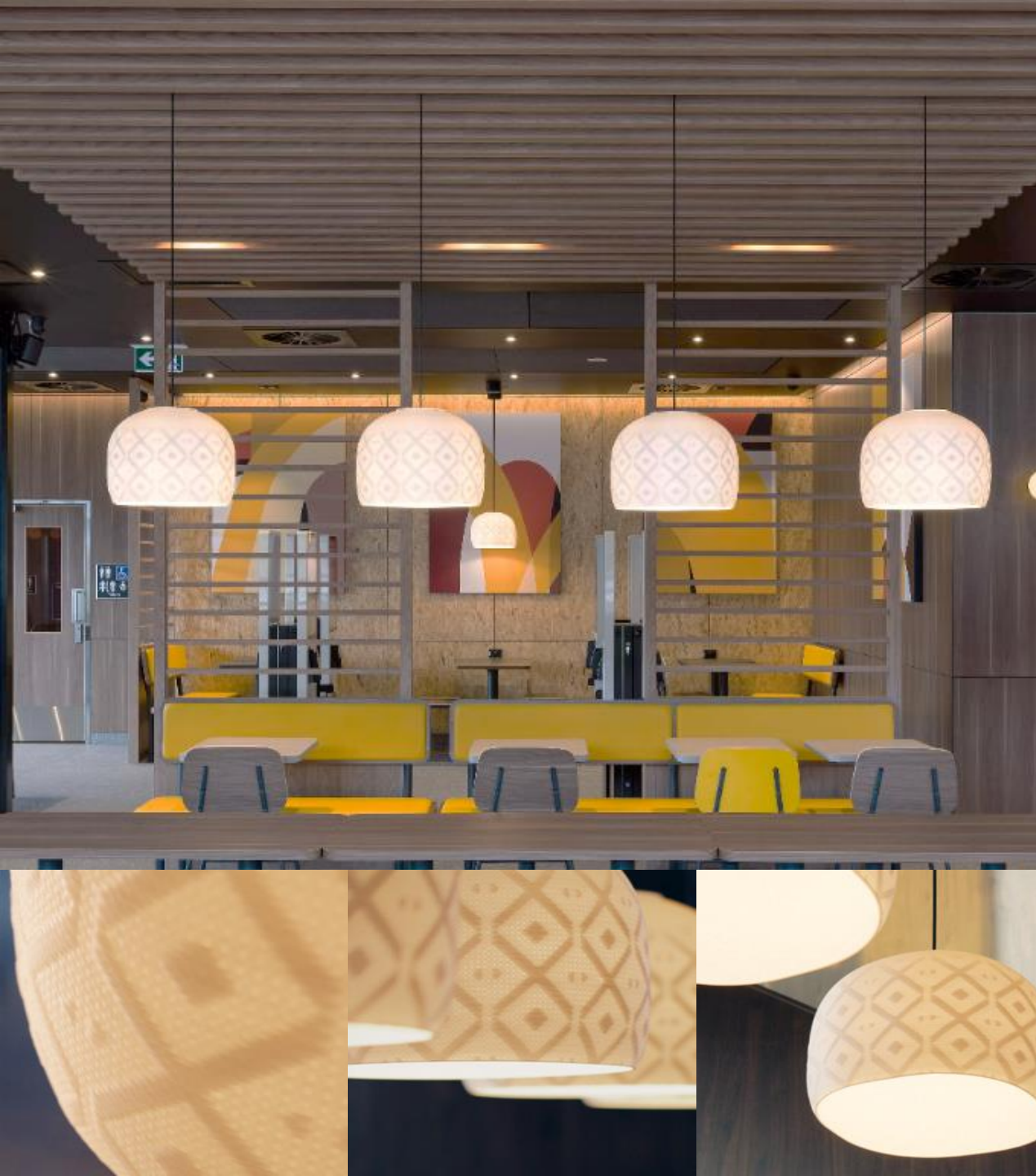
Hospitality Lighting Overview

Creating a unique and memorable experience for every guest is key to ensuring customer loyalty. At the same time, a focus on costs and sustainable solutions is important to your bottom line. With flexible Philips LED lighting, you can welcome, guide, and entertain every visitor who walks through your door – all while saving on energy and operational costs. From personalized lighting in hotel rooms to wayfinding and displays, make your hotel a destination to remember.



McDonald's

McDonald's has ambitious targets for sustainability. In 2030 they want to reduce their carbon footprint by 60%. McDonald's recognized that with 3D printing they would also benefit from using sustainable materials. Philips MyCreation was able to deliver speedy and sustainably on a global scale. By pushing the point of production closer to the point of use. McDonald's is hoping to have the Philips MyCreation product in franchises in more than 100 countries across the globe.









Hospitality



Pendants



Grand Series



Original Series



Cord Series



Special Editions



Downlight



LuxSpace Downlight
High Gloss Reflector



LuxSpace Downlight
Matte Reflector



GreenSpace
Downlight



GreenSpace
Perfect Fit



CoreLine Downlight



CoreLine
Recessed Spot



LuxSpace
Surface Mounted



Drum
Series



Luminous Textile



Hospitality



Essential



New for 2023 Q4

Essential

The Essential from Philips MyCreation 3D printed range is available in 3 sizes and can be mounted in 3 different ways, essentially providing you with numerous design options to meet your needs.

And, it's made from recycled materials, making it a conscious choice for those looking to contribute to a circular economy.



Hospitality



Ambient



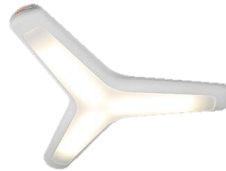
Marbul 1x



Marbul 2x



Marbul 3x



Izar



Rektor



Bolster



Smart Surface
Tubed

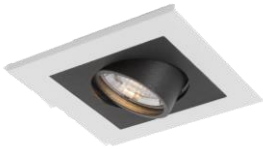


Smart Lotis (in
Smart Surface Box)

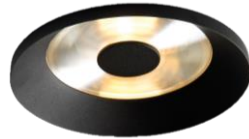
Downlights



Qbini Square Out
Trimless



Qbini Trimless



Kurk



Smart Kup



Smart Kup Mask



Lotis Square
Recessed



Smart Lotis
Recessed



Smart Cake

Pendant



Smart Surface Tubed



Flat Moon



Flat Moon
Eclips Pendant



Marbul
Suspension

Wall Mounted



Duell



Bold



Dent

Hospitality



Antumbra Button



Finishing

Antumbra Display



Finishing

Revolution series



Revolution series



Hospitality



Grazing



Graze Powercore



Graze Compact

Wall Washing



Blast Powercore
Gen4

Spot Lighting



Burst Powercore
Gen2



Burst Compact
Powercore

Cove Lighting



Cove
Powercore



EvenBalance
Powercore



Fuse
Powercore



PureStyle
Powercore



Vaya Cove



Vaya FreeForm

Direct View



Flex, Flex Compact
& Flex Micro Gen3



Flex Elite



Accent Powercore
Gen3



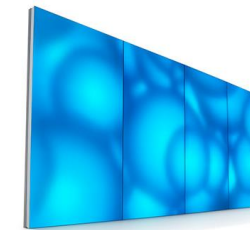
Vaya Tube



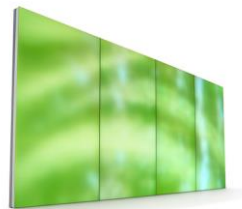
iColor Accent
Compact



ArchPoint iColor
Powercore



Luminous Textile



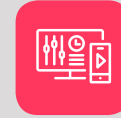


Interact Hospitality

Benefits

- Real-time operational transparency – across your entire property
- Improve operational efficiency – by integrating with HVAC, PMS, and other hotel systems
- Streamline staff operations – through a single intuitive dashboard showing guest room status
- Enhance guest experiences – with personalized, in-room experiences designed to relax or energize
- Support well-being – with sunrise-simulating wake-up lighting
- Optimize energy usage – in unused and unoccupied guest rooms
- Turn your hotel into a memorable landmark – with dynamic façade lighting

Software



Scene
management



Bio-adaptive
lighting



Energy
optimization



Environmental
monitoring



API



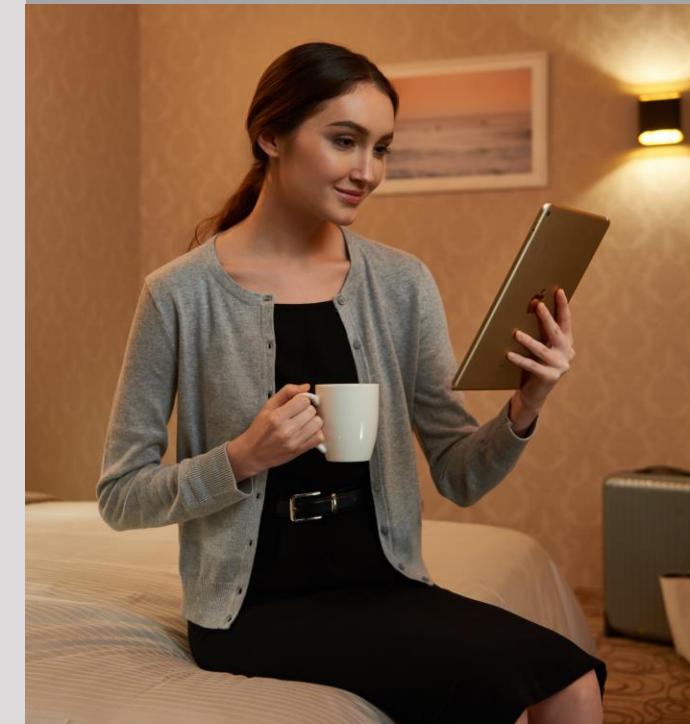
Application areas

Hotel lobbies

Guest Rooms

Restaurants

Function Rooms





Interact Hospitality, Swissotel, Singapore

The vision

The 1,261-room five-star hotel, part of the Accor group, is one of the tallest in Southeast Asia at 226 meters high. With a firm commitment to providing an enhanced guest experience and meeting sustainability goals, Swissotel was looking for a system that would help improve staff efficiency.

The solution

The Interact Hospitality dashboard allows staff to see real-time guest requests, ensuring quick response and turnaround times, helping to improve productivity and service levels.

Residential











Residential



Ambient



Smart Tubed Wall



Split LED (wall mount)



Marbul 1x



Marbul 2x



Marbul 3x



Flat Moon Eclips
(Surface)

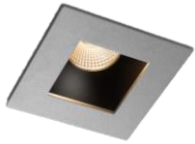


Marbul suspension



Tulip

Downlight



Slide



Wink



Marbul Recessed x1



Marbul Recessed x2



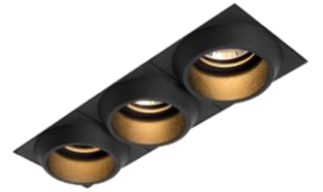
Smart 48 +



Mini Multiple



Qbini Frame



Qbini Round

Exterior



Hipy



Lowieze Floor



Kabaz Floor

Residential



Antumbra Button



Finishing

Antumbra Display



Finishing

Revolution series



Revolution series



Outdoor



Outdoor Lighting Overview

The complexities of transportation infrastructure mean varying types of illumination are needed to ensure traffic flows smoothly, people feel safe, and cities save on costs. Smart LED street lighting is a cost-effective and sustainable choice for cities today – and into the future. Philips LED street lighting systems are smart and versatile, so you can manage, maintain and monitor the entire system simply and efficiently.



LED Street Lighting, Cardiff, UK

The City of Cardiff took a major step towards becoming a smart city and reducing its carbon footprint by installing more than 14,000 connected Philips LED street lights. The new lighting reduces energy by 60%, saving more than £750,000 per year, while supporting safety and security of citizens. The project, which followed a public consultation and decided on the new lighting having a 3000k 'warm white' colour temperature, saw Philips Lighting reach a milestone of 1000 worldwide connected LED street lighting installations.





Dublin Port Tunnel, Ireland

Signify has equipped Dublin Port Tunnel in Ireland, an iconic infrastructure spanning 9km, with energy-efficient LED lighting for all its 1800 light points in the tunnel. The upgraded lighting has achieved up to 60% reduction in electricity use, which is the equivalent of the electricity consumed by up to 300 Irish households. The upgrade has enabled the tunnel to operate with reduced costs, lower emissions, and a reduced impact on traffic congestion on the road network. The project is expected to save upwards of £3.3 million in electricity costs over the initial five years.

Furthermore, in the spirit of 'remanufacturing', the installation reused all existing light points. The project therefore contributes to a more circular economy, saving an estimated £2.6 million on total project costs.







Outdoor



Road & Street



Luma gen2



DigiStreet



LumiStreet
Gen2



Iridium gen4



ClearWay gen2



SunStay Pro

Solar

Urban



CitySoul gen2
Mini & Large



Milewide gen2
(Small & Large)



TownGuide



Metronomis



TownTune
Central Post-Top



TownTune
Asymmetric



Jargeau LED Gen3

Floodlight



ClearFlood
Small & Large



UniFlood



CoreLine Tempo
Small/Medium/Large



CoreLine Tempo
XL



OptiVision LED
DALI

Bollard



UNI Bollard



OptiSpace

Amenity



CoreLine
WallMounted
Eyelid

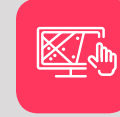


Interact City

Benefits

- Improve operations – with remote control and real-time monitoring of all lighting
- Ensure uptime – immediately identify and rapidly respond to lighting failures
- Illuminate intelligently – deliver light when, where, and as needed with flexible lighting schedules
- Enhance city safety – adjust lighting automatically to support first responders
- Minimize energy usage – automatically dim lighting at night when streets are quiet
- Gain insight to improve city livability – use sensors to collect lighting and non-lighting related data
- Make your city a smart city – make your lighting infrastructure an enabling platform for smart city applications

Software



Lighting asset
management



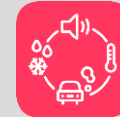
Scene
management



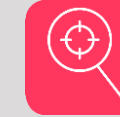
Energy
optimization



API



Environmental
monitoring



Incident
detection

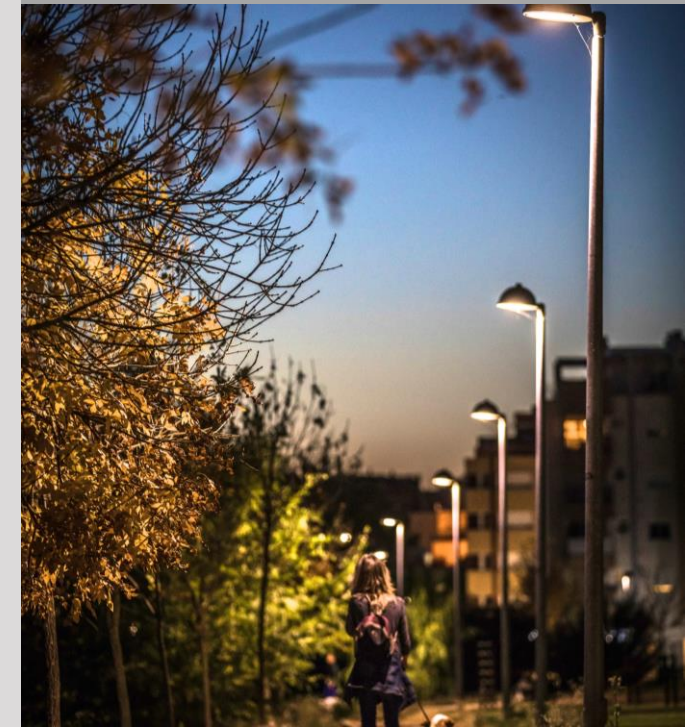


Application areas

Road and Streets

Parks and Plazas

Footpaths and Cycle paths





Outdoor Multisensor

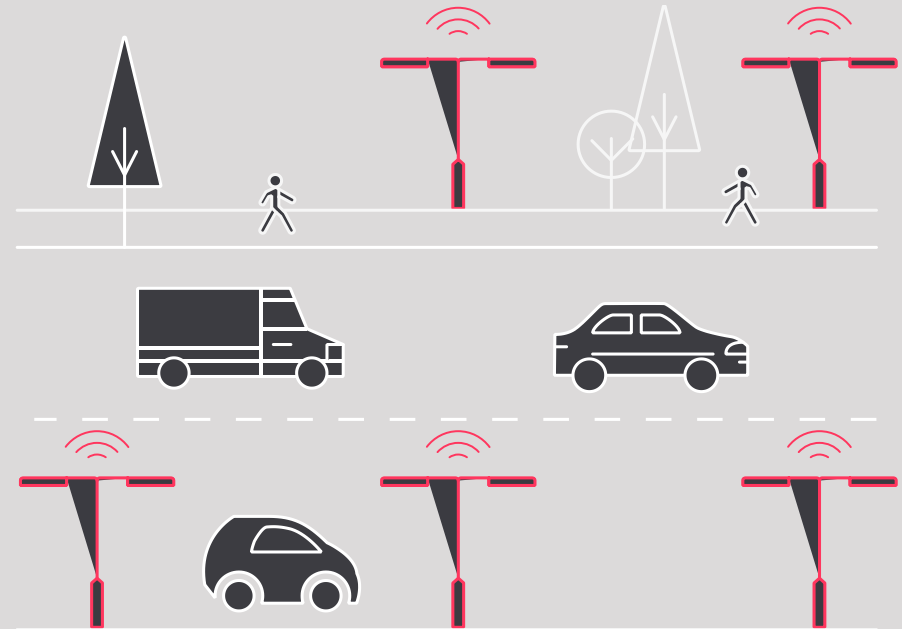
System-connected sensors are part of the growing smart city ecosystem and give intelligent opportunities beyond what standalone sensors can do.

Benefits

- Field rotatable radar motion sensors to automatically increase the light level in case of activity, a.k.a. light on demand
- Grouping via a local mesh radio network to increase the light ahead in case of activity, a.k.a. forward triggering
- Light sensors to enable dusk to dawn operation

Sensing applications include:

- Photocell sensing > Dusk to dawn lighting control
- Motion/presence sensing with radar > Maximize energy savings and maintain road user safety
- Luminaire tilt > road user safety (tilt alarm)
- Luminaire vibrations > road user safety (impact alarm)
- Ambient temperature > citizen well-being (city planning)
- Ambient noise > citizen well-being (high noise notification)





Interact City, Port of Bilbao, Spain

The vision

Spain's Port of Bilbao is one of Europe's busiest transport and logistic hubs – and an important entry point for cargo and cruise ships in the European Atlantic Arc. To reduce energy costs and lighting management, the existing lighting system needed updating.

The solution

Inspired by the lighting system at the Ports of Tenerife (another Interact City project), the Port Authority of Bilbao opted for a connected LED lighting system managed by Interact City software. With more than 1,000 Philips ClearFlood LEDs, workers benefit from improved visibility and safety while site managers have better control over their assets.

Architectural



Architectural Lighting Overview

An increasing number of the world's leading cities are forging a unique identity by lighting important landmarks to create inspiring visual experiences. When combined with remote programming and management, innovative LED lighting can be quickly adjusted to transform your city's appearance. Philips' dynamic, colourful architectural lighting helps stimulate commerce and tourism, and serves as a source of pride for citizens.



Sauchiehall Street, Glasgow

Signify has helped Glasgow City Council deliver on its redevelopment programme by providing bespoke, decorative, Color Kinetics connected street lighting in its famous Sauchiehall Street. This is part of a city-wide regeneration project to make the city centre greener and more attractive.

Glasgow City Council wanted to make its city centre a more attractive place to live, work and enjoy as part of its 'Enabling Infrastructure – Integrated Public Realm (EIIPR) programme'. A significant part of achieving this goal was to have a connected lighting system throughout the city centre.









Architectural



Grazing



Graze Powercore



Graze Compact



PureStyle



Vaya Linear



UniEdge

Wall Washing



Blast Powercore

Flood Lighting



ReachElite 100
Powercore



ReachElite 200
Powercore



ReachElite 300
Powercore



Vaya Flood LP



Vaya Flood MP



Vaya Flood HP



UniFlood C



UniPoint

Spot Lighting



Burst Powercore



Burst Compact
Powercore



C-Splash 2
(Submersible)

Direct View



Flex, Flex Compact
& Flex Micro



Flex Elite



Accent Powercore



Accent Compact



ArchPoint
icolorPowercore

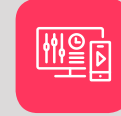


Interact Landmark

Benefits

- Create a unique identity for your city – by illuminating public structures with dynamic, color-changing light
- Attract tourism and drive commerce – with spectacular and branded public light experiences
- Create community and measure impact – via social media mentions and the social impact app
- Manage light shows remotely – create and trigger light shows from anywhere
- Simplify maintenance – with real-time monitoring of all system devices that helps protect your investment
- Maximize energy savings – with best-in-class connected LED luminaires from Color Kinetics and Vaya

Software



Scene
management



Lighting asset
management



API



Social impact
app



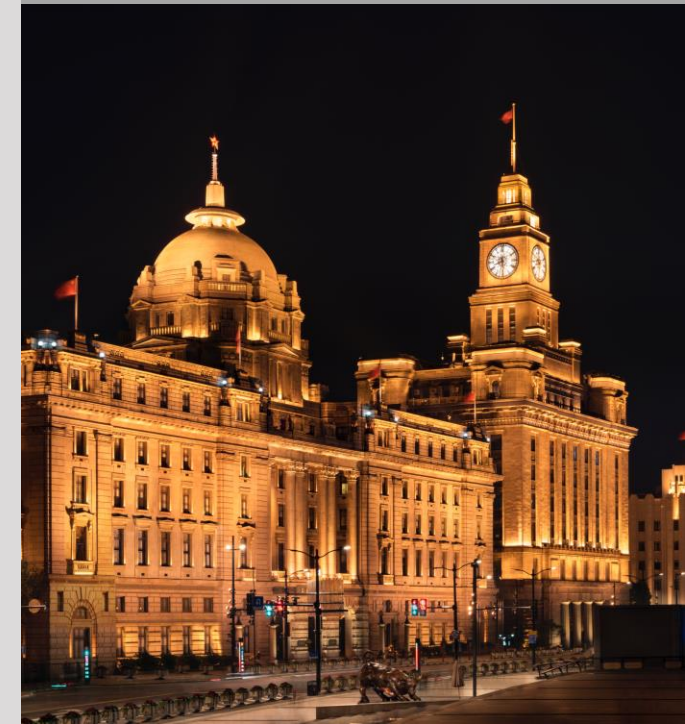
Application areas

Buildings

Monuments

Bridges

Architectural Facades





Interact Landmark, Illuminated River, London, UK

The vision

The Illuminated River Foundation ran an international design competition for the lighting design of 15 bridges in London. This was won by artist Leo Villareal, London architects Lifschutz Davidson Sandilands, and Signify. We were awarded the project because of our global expertise in lighting, and the ability to deliver such a large-scale, connected lighting project.

The solution

The aim is to create a multi-level visual experience for visitors of the bridges. Each installation will be viewed by pedestrians from London's riverbanks, from the air, from tall buildings and by boat. The Interact Landmark system will remotely monitor and manage the lighting on each bridge.



Sports



Sports Lighting Overview

Signify provides solutions for indoor and outdoor sports at levels of competition, including Recreational (Class III), and Regional level (Class II), and Major National and International Arenas and Stadiums (Class I). Our offers include lighting for the 'Field of Play', combined with entertainment lighting to achieve a truly immersive 'Arena Experience'.



Signify's lighting solutions installed in 69 Everlast gyms across the UK

Signify has been appointed by Frasers Group to design and supply the lighting for 69 Everlast Gyms across the UK. The lighting upgrade is part of the Fraser Group's 'elevation strategy' to develop a unique model within the UK fitness industry and offer an unparalleled class and gym experience for Everlast members and visitors which is both inclusive and immersive.

In addition, designing the gyms with LED lighting dramatically cuts the energy consumption by about 80%, when compared to the traditional technologies that were deployed earlier. Added controls will help manage and reduce energy consumption by creating and managing uniform light schedules for all 69 gyms from a single dashboard, reducing operational costs, ensuring compliance, and efficiently planning maintenance.



Smoothies	coffee
protein power	americano
blueberry	double espresso
orange	latte
berry bliss	macchiato
super greens	hot chocolate
	breakfast tea
juices	protein shake
orange	protein bar
apple	
lemon	
lime	
mint	



Indoor Sports



Functional



Height



GentleSpace
G3



CoreLine Highbay
G4



ClearFlood

Suspended



KeyLine



Flatmoon



Dome

Recessed



GreenSpace



CoreLine Downlight
GridLight



Smart Lotis



TrueLine
Recessed

Track



Drum



Accent
Track



Accent
Cylinder

Surface



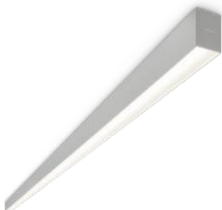
Vaya
Tubed



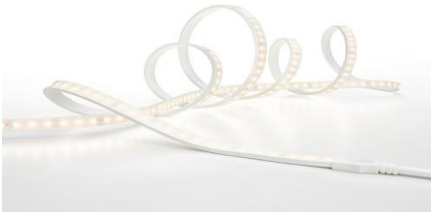
Lotis
Tubed



Drum



TrueLine
Surface



Vaya Freeform
Tubed



OneSpace



Illuminating the world's largest winter sports event in China

The new lighting helps athletes to better engage in their sports and improve their performance. It also enhances the experience of spectators and TV viewers. The new high-quality, flexible, and energy-efficient sports lighting also helps to optimise operational efficiencies and maintenance. Signify customised each venue's lighting system to their unique requirements, so they can easily host a range of events that all have their own lighting requirements.

- Provides a combination of Philips LEDs and Interact Sports connected lighting system at key venues.
- Optimises athlete, spectator and viewer experience.
- Improves operational efficiency and maintenance.



Outdoor Sports



Recreational



CoreLine Tempo XL



ClearFlood
Small



ClearFlood
Large



OptiVision LED
DALI

Area & Stadium



ClearFlood
Large



OptiVision LED
DALI



OptiVision LED
DALI



ArenaVision LED
DMX



ArenaVision LED
DMX

Entertainment



VL6500



VL6000



VL4000



VL2600



VL1100



VL800



VL800 Beamline

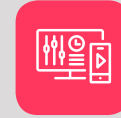


Interact Sport

Benefits

- Deliver end-to-end integrated experiences – with intelligent lighting from entry to exit
- Enjoy peace of mind – with real-time system insights and efficient lighting management
- Make your stadium more attractive – with beautiful lighting in the concourses, spectator areas, training and practice fields, and retail and hospitality areas
- Support marketing programs and entertain fans – with customized light shows and schemes
- Attract sponsors – through unique advertisement opportunities
- Generate new revenue streams and business opportunities – by enabling a flexible, multi-purpose venue that can host different types of events
- Simplify maintenance – Manage, monitor, and control all connected lights with an intuitive dashboard

Software



Scene
management



Lighting
management



Bio-adaptive
lighting



API



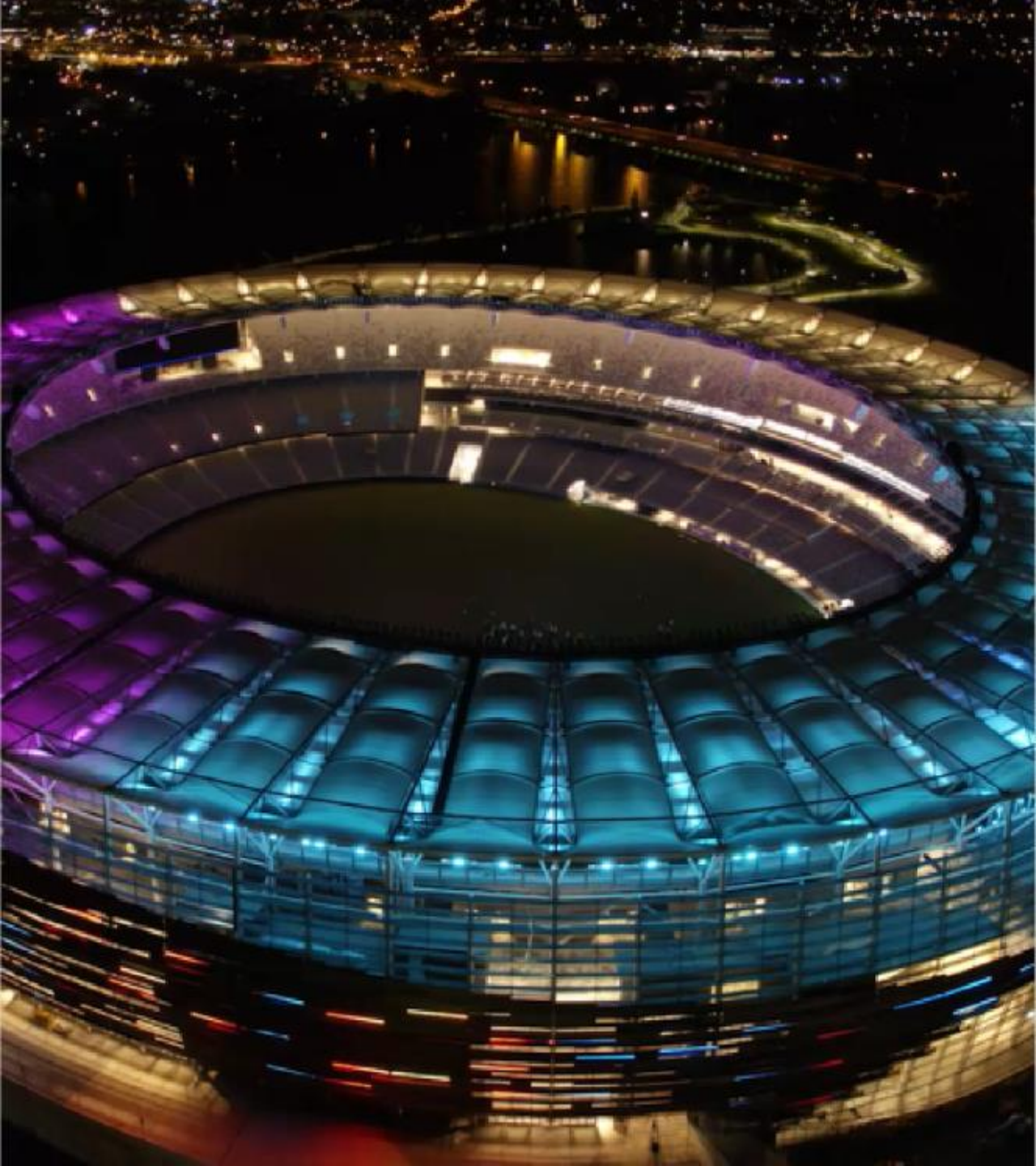
Application areas

Stadiums

Arenas

Recreational Facilities





Interact Sports, Optus Stadium, Perth, Australia

The vision

In 2012, the Government of Western Australia set a goal to create a multipurpose facility that delivered a unique experience for fans and the wider Perth community. They needed a venue that could be used 365 days of the year, with fully IoT-enabled stadium and innovative technologies in order to attract domestic and international events.

The solution

Interact Sports has helped the Optus Stadium to become the complete multipurpose arena. Fans can watch anything from their home football and cricket team to world-famous rock bands. Using Interact Sports Scene management, the lighting operator can merge music and lighting in advance of events, making it easy to create visually stunning pre-match and half-time light shows that immerse fans.





Services



Services

**We'll take care of
the lighting, so you
can take care of
business**

Services

Today's lighting technology can do much more than simply provide illumination.

We offer several services that add value. This includes: evaluating your current lighting equipment, creating a new lighting plan, hassle-free maintenance, remote support and guaranteed lighting performance. Make lighting services an integral part of your success.

Professional Services



Auditing



Excellent lighting starts with an expert plan. To help you make an informed decision, Philips will begin by assessing how well your current lighting equipment matches your lighting needs. We'll perform a detailed audit of your organization, facility or project. The data collected on-site will inform an optimized lighting design to meet your requirements – now and in the future.

Consulting



Knowing what you want your lighting to deliver is one thing – knowing how to get there is another. With the help of Philips consulting services, we'll co-create the most effective long-term lighting plan – which can be anything from a straightforward LED retrofit to a completely new installation. We'll also assist you in creating a compelling business case and propose financing options to free up cash for your core business activities.

Once you've set the priorities and targets for your new lighting installation, our consulting services will help you fill in the details. This includes the use of a detailed user-experience design, visualizations of the final installation, and mock-ups.

Professional Services



Lighting Application Specialist's

The 'Lighting Application Specialist' (LiAS) Team of fully trained and competent lighting designers can provide support for the following project stages:

- Stage 1** **Client Meetings**
LiAS will meet with the customer pre-design to assist in the creation of a design brief
- Stage 2** **Concept Design**
LiAS will produce photo, video or virtual reality visualisation's of the lit effect
- Stage 3** **Preliminary Design**
LiAS will produce sample calculations to determine an indicative BoM to facilitate a non-binding quote
- Stage 4** **Detailed Design**
LiAS will produce a comprehensive design to determine the final BoM to facilitate a binding quote
- Stage 5** **Turnkey Project**
LiAS will produce Risk Assessments for projects where Signify acts as the Principal Contractor

Lifecycle Services



Essential Package



Extend the life of your lighting installation and safeguard your investment.

- Preventive maintenance helps you catch issues and correct them quickly
- Software licenses, helpdesk support and service ticketing included
- Remote assistance within business hours ensures rapid support

Premium Package



For peace-of-mind and better control of your costs, the Premium Package includes everything in the Essential Package – plus:

- Comprehensive coverage at a fixed annual cost
- Labour and materials (spare parts and/or functional product replacements) in case of failures
- Trained service engineers for on-site corrective and preventive maintenance

Premium + Package



For comprehensive insight and control, including effective lifecycle management, Premium+ offers everything included in the Premium Package – plus:

- Thorough analysis of your lighting usage and needs, with detailed reports
- Ongoing consultations
- Ongoing training, system optimization and content management

Managed Services



Managed Services



Hassle-free savings with optimized performance

- Lighting design based on the lumen output, not a selection of products
- Save money on energy, maintenance and depreciation costs
- Hassle-free operation of your lighting and product upgrades
- Detailed training and documentation for users

Light as a Service



Package includes everything in Standard Managed Services – plus:

- Pay only for the light you use rather than purchasing your own lighting equipment
- Optimize your return on investment with no capital expenditures or maintenance and replacement costs
- Package includes all future technology updates

Circular lighting



Package includes everything in Light as a Service – plus:

- Luminaires are designed for reuse and recycling
- Minimize your carbon footprint and materials waste
- Build a business which balances people, planet and profit

Managed Services

Service Activities



Standard



**Light as
a Service**



**Circular
lighting**

Audit, Design and Consulting	✓	✓	✓
System Execution*	✓	✓	✓
Operations	✓	✓	✓
Maintenance, Training and Documentation	✓	✓	✓
Performance (energy, light level and uptime/other)	✓	✓	✓
Financing		✓	Optional
Circular designed products			✓
End of Contract management			✓

*System Execution allows includes project management and (for smart systems) commissioning.
Installation activities may be executed by the Customer or his contractor and are as such optional.



Tools and support

A wide-angle photograph of the San Francisco City Hall at night. The building is illuminated with warm, golden light, highlighting its classical architecture, including the large central dome and the portico with columns. The sky is a deep blue, and the foreground shows a row of trees and streetlights.

Pioneers of Light

Light beyond
Illumination

Our Specifier Hub

Welcome to Pioneers of Light, Signify's global hub for architects, lighting designers and engineers.

[Pioneers of Light](#)

Tools

Photometry for your lighting designs:



[Philips Product Selector \(PPS\)](#)

Revit Library for your BIM project:



[BIM – Revit Library](#)

Expand your knowledge about lighting



[Signify Lighting Academy](#)

Our online tools provide the information, innovation and inspiration for your own lighting design projects.



Support



specuki@signify.com

Should you wish to speak to our team regarding a lighting design, product or system query, please contact our specification team.

Signify