

Day-Brite

CFI

by Signify

Recessed

FluxGrid 2x4

2FG up to 7400 lumens



Day-Brite / CFI FluxGrid LED recessed offers architectural appeal with “must have” features. Two different lens styles, discrete air handling, integral emergency, and access to the boards and driver from below make FluxGrid an ideal solution for a wide range of applications.

Project: _____
 Location: _____
 Cat.No: _____
 Type: _____
 Lamps: _____ Qty: _____
 Notes: _____

Ordering guide – standard & wireless controls

Standard configurations available with all choices, unless otherwise noted. Base configurations selections indicated by blue.

example: 2FGG42B840-4-D-UNV-DIM

| Width | Family | Ceiling Type | Air Function | Lumens (nominal delivered) | Color | Length | Center Diffuser | Voltage | Driver | Options |
|-------|-------------|----------------------|---------------------------|--|--|--------|---|--|---|--|
| 2 | FG | G | | | | 4 | | | | |
| 2 2' | FG FluxGrid | G Grid NEMA G 15/16" | Blank Static H Air return | Standard Configurations 38L 3800 43L 4300 48L 4800 54L 5400 74L 7400 Base Configurations 42B 4200 | 830 80 CRI, 3000K 835 80 CRI, 3500K 840 80 CRI, 4000K 850 80 CRI, 5000K | 4 4' | D Diffuse (ribbed) DS Diffuse (smooth) | UNV Universal voltage 120-277V 120 ¹ 120V 277 ¹ 277V 347 347V | DIM ² Dimming SDIM ³ Step dimming to 40% input power XDIM ¹ MarkX phase dimming LDE Lutron LDE5 5% dimming DALI DALI | AG Antimicrobial finish F1 3/8" flex, 3 wire 18 gauge 6' F2 3/8" flex, 4 wire 18 gauge 6' F1/D 3/8" twin flex, 3 wire 18 gauge 6' for dimmable luminaires F2/5W 3/8" single flex, 5 wire 18 gauge 6' for dimmable luminaires F2/6W 3/8" single flex, 6 wire 18 gauge 6' for dimmable and EMLD luminaires GLR Fusing, fast blow GTD/E ^{4,8} UL924 listed Bodine GTD factory installed on driver input GTD/SNSR ^{6,7,8} UL924 listed Bodine GTD factory installed between driver and sensor EMLD ^{4,8} Integral emergency battery pack IAP ⁵ Integral Interact Pro RF sensor, enables wireless connected lighting control DSC Quick driver disconnect IAO ⁵ Integral Interact Office daylighting and occupancy sensor, enables wireless connected lighting control SWZDT ⁵ Integral sensor, daylighting and occupancy, advanced grouping with dwell time CHIC Chicago Plenum rated |

Ordering guide – PoE controls

example: 2FGG43L840-4-D-LV-POE-IAO

| Width | Family | Ceiling Type | Air Function | Lumens (nominal delivered) | Color | Length | Center Diffuser | Voltage | Driver | Options |
|-------|-------------|--------------|---------------------------|--|--|--------|---|----------------|-------------------------|--|
| 2 | FG | G | | | | 4 | | LV | POE | |
| 2 2' | FG FluxGrid | G Grid | Blank Static H Air return | 38L 3800 43L 4300 48L 4800 54L 5400 | 830 80 CRI, 3000K 835 80 CRI, 3500K 840 80 CRI, 4000K 850 80 CRI, 5000K | 4 4' | D Diffuse (ribbed) DS Diffuse (smooth) | LV Low voltage | POE Power over ethernet | IAO Integral Interact Office daylighting and occupancy sensor, enables wired connected lighting control EMLD 600lm integral emergency driver and battery pack |

1 XDIM requires 120V or 277V specification. Not available on 30L package.

2 Integral controls options dimmable to 5% via wireless wall switch. Non-controls options are 0-10v dimmable to 1% for Standard configurations, and to 10% for Base configurations.

3 Consult factory for SDIM on 74L package.

4 Bodine BSL310, 1100lm nominal delivered.

5 Specify DIM driver option only.

6 Must be installed in conjunction with a UL1008 device.

7 Must be ordered with an integral controls option.

8 Not available with 347V option.

Accessories (order separately)

- FMA24 – 2'x4' "F" mounting frame for NEMA "F" mounting
- FGD4L – FG 4' ribbed replacement lens
- FGDS4L – FG 4' smooth replacement lens
- FGHD4L – FG 4' air return ribbed replacement lens
- FGHDS4L – FG 4' air return smooth replacement lens
- FSK24 – 2'x4' surface mount field installation kit (factory welded seams)
- FSF24 – 2'x4' surface mount field assembly kit (field assembled)

Light to go

Compatible configurations

Luminaire

2FGG42B830-4-D-UNV-DIM
 2FGG42B835-4-D-UNV-DIM
 2FGG42B840-4-D-UNV-DIM
 2FGG42B850-4-D-UNV-DIM

2FGG42B840-4-DS-UNV-DIM



interact ready.

2FG FluxGrid recessed 2x4

up to 7400 lumens

Application

- 3" deep low profile configuration provides minimal penetration into the plenum space.
- Acrylic diffuser available in ribbed and smooth configurations provides even illumination with comfortable appeal.
- Standard and base configurations available in multiple lumen packages to suit the needs of various applications.
- Lambertian distribution creates uniform horizontal and vertical illuminance on the work plane and reduces scalloping on the walls.
- CRI 80 minimum color rendering with balanced spectrum.
- LEDs coupled with standard dimming provide prolonged lumen maintenance. Optional integral sensors contribute further to LED lumen maintenance.
- Designed for use with standard 15/16" wide Grid (NEMA "G") T-bars. Drywall or plaster applications require use with the FMA24 "F" mounting frame accessory (sold and shipped separately).
- Continuous row mounting is possible with a 1" gap between fixtures accommodated by others.

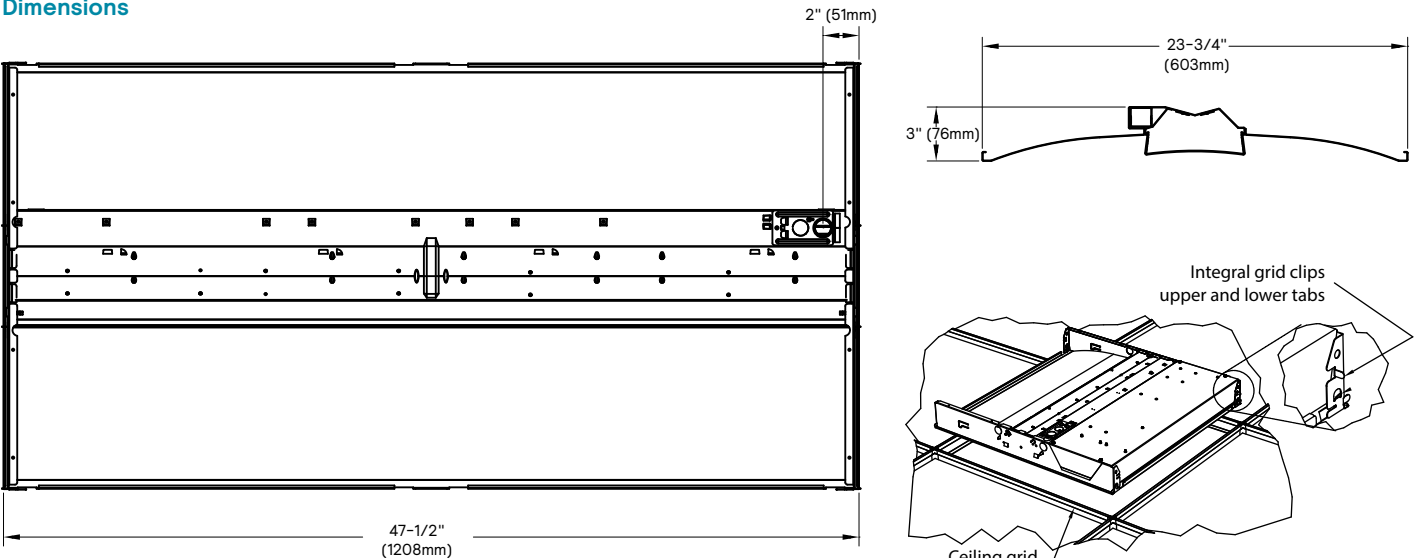
Enclosure

- Opal acrylic diffuser provides visually comfortable lumenance without compromise to luminaire efficacy.
- Diffuser requires no frames or fasteners and can be easily removed from below without the use of tools.

Construction/Finish

- Uncomplicated design is 3" deep with minimal material overlap creating several benefits:
 - Less material required
 - Less packaging required
 - Reduced weight for ease of handling and transit
 - Less energy required for construction and assembly
 - More luminaires can be shipped per truck to reduce fuel consumption

Dimensions



- Metal side covers are die formed with a conical shape to enhance light distribution and visual aesthetic.
- Injection molded lens retainers allow for easy, tool-free access to the LED boards and driver from below, and provide positive lens retention.
- Luminaire finish is matte white polyester powder coat for high quality, durable finish.
- T-bar grid clips are integral to the body.
- Air return option provides air flow through a unique lens retainer design. Air passes through architectural forms in the lens retainers (each end), and through the end plate of the luminaire. A cover plate is provided to control air flow through the luminaire, or make it static as required.
- Integral controls options include sensor mounted in one lens retainer.
- EMLED option requires the emergency battery pack be installed with a top side cover. Access from above.
- To estimate lumen output in emergency mode, multiply emergency pack wattage by efficacy, then by 1.10.

General notes

- All options are factory installed.
- All accessories are field installed.
- Many luminaire components, such as reflectors, refractors, lenses, sockets, lampholders, and LEDs are made from various types of plastics which can be adversely affected by airborne contaminants. If sulfur based chemicals, petroleum based products, cleaning solutions, or other contaminants are expected in the intended area of use, consult factory for compatibility.

Electrical

- Integral sensor options for occupancy sensing and/or daylight harvesting are available for additional energy savings with no reduction of life or increase in installation labor.
- Standard configurations provide up to 120 lumens per watt and are available with 5 lumen packages and 3000, 3500, 4000, and 5000K color temperatures.

- Base configurations provide up to 124 lumens per watt and are available in 4200 lumen flux and 3500K and 4000K color temperatures.
- LED boards are accessible from below by removal of the lens. Lens removal is tool-free by compressing the sides and pushing to one end.
- LED driver is accessible from below by removal of the lens and integral wireway cover. The wireway cover is easily removed with a flat head screwdriver.
- Other driver options including step dimming (SDIM, 100%/40%), DALI, phase dimming (XDIM), and Lutron are available.
- 5 year manufacturer's limited warranty. Visit signify.com/warranties for complete warranty information.
- TM-21 predicted L70 lumen maintenance up to 70,000 hours.
- cETLus listed to UL and CSA standards, suitable for damp locations.
- FluxGrid luminaires are DesignLights Consortium qualified. Please see the DLC QPL list for exact catalog numbers, www.designlights.org/QPL

Energy data

| Luminaire | Catalog Number | Input Power | Efficacy |
|--------------|----------------|-------------|----------|
| 2x4 Standard | 2FGG38L840 | 31.8 | 120 |
| | 2FGG43L840 | 36.2 | 119 |
| | 2FGG48L840 | 41.5 | 116 |
| | 2FGG54L840 | 48.9 | 114 |
| | 2FGG74L840 | 69.2 | 106 |
| 2x4 Base | 2FGG42B840 | 33.9 | 124 |

2FG FluxGrid recessed 2x4

up to 7400 lumens

Wireless Controls Options

SpaceWise DT (SWZDT)

- Standalone daylight and occupancy sensing with advanced grouping and dwell time
- Commissioning via compatible Android phone and Philips Field App
- Dimming via compatible Zigbee wireless wall switch only (see link below for details)
- Register for the commissioning app at <http://registration.componentcloud.philips.com/appregistration/>
- Integral sensing options (SWZDT, IAP) may not be combined
- For more information including recommended switches, refer to the following: –

SWZDT – www.usa.lighting.philips.com/systems/lighting-systems/spacewise

FluxGrid shown with integral sensor



Interact Pro (IAP)

- Interact Pro brings the power of connected lighting to **small and medium businesses** without the complexity usually associated with connected lighting.
- Interact Pro includes an app, a portal and a broad portfolio of wireless Luminaires, lamps and retrofit kits all working on the same system.
- Commissioning via Interact Pro App (Android or iPhone)
- Prepare commissioning remotely via Interact Pro portal
- Requires compatible Interact Pro Gateway and internet connectivity for commissioning
- Compatible with UID8451/10 ZigBee Greenpower wireless dimmer switch
- Compatible with wireless Occ sensor (OCC SENSOR IA CM IP42 WH 10/1) or wireless Day/Occ sensor (OCC MULTI SENSOR IA CM WH 10/1)
- For more information on Interact Pro visit: www.interact-lighting.com/pro
- For more information on Interact Ready visit: www.philips.com/interact-ready

Interact Office (IAO)

- A wireless IoT connected lighting solution for **large enterprises** that span across multiple floors, buildings and require multiple gateways.
- View all your projects under one dashboard and easily compare insights from multiple projects in one view.
- Compatible Zigbee Green Power wall dimmer and wireless Occupancy or Daylight & Occupancy sensors available.
- Use Interact Office software and insights to increase building efficiency, achieve building wide integration and optimize space through occupancy analytics.
- Supports advanced IoT Apps on wayfinding, room/desk reservation and offers open APIs
- Requires compatible Interact Office Gateway and internet connectivity for commissioning.
- For more information on Interact Office Wireless, visit: www.interact-lighting.com/office or www.usa.lighting.philips.com/systems/system-areas/offices

Wired Controls Options

Interact Office Wired (PoE)

- PoE based IoT connected lighting solution for large enterprises that span across multiple floors, buildings and require multiple gateways.
- Use Interact Office software and insights to increase building efficiency, achieve building wide integration and optimize space through occupancy analytics.
- Supports advanced IoT Apps on Personal Control, Space Management, wayfinding, room/desk reservation and offers open APIs for light control and data exchange.
- PoE lighting controller is accessible from below.
- Integral sensor option for occupancy sensing (PIR) and/or daylight harvesting available for additional energy savings.
- Optional integral emergency controller and battery pack provides 600lm nominal output. Test switch and indicator light mounted on side of chassis on one end.
- Emergency battery has a 3 month pre-installed shelf life, and must be stored and installed in environments of 20C to 30C (-4F to 86F) ambient, and 45-85% relative humidity.
- For more information on Interact Office Wired, visit: www.interact-lighting.com/office or www.usa.lighting.philips.com/systems/system-areas/offices

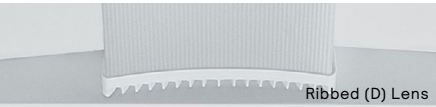
Energy data

| Catalog Number | CCT | Flux (lm) | DC Power (W) | DC Efficacy (lm/W) |
|-----------------------|-------|-----------|--------------|--------------------|
| 2FGG38L840-4-D-LV-POE | 4000K | 3857 | 30 | 129 |
| 2FGG43L840-4-D-LV-POE | 4000K | 4394 | 35 | 127 |
| 2FGG48L840-4-D-LV-POE | 4000K | 4908 | 40 | 124 |
| 2FGG54L840-4-D-LV-POE | 4000K | 5612 | 47 | 120 |

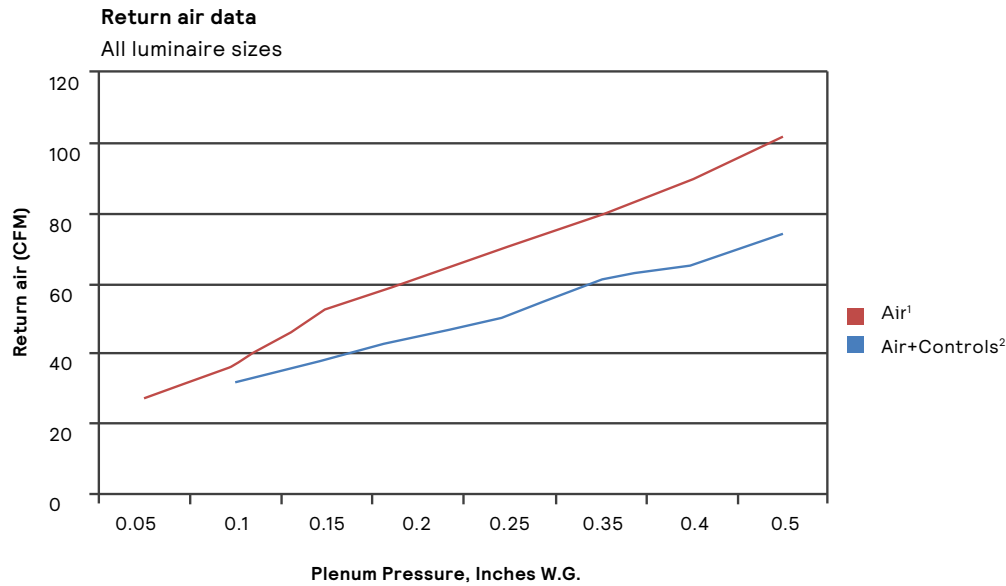
2FG FluxGrid recessed 2x4

up to 7400 lumens

Air return option



Allows air to flow through vents in the lens retainers on each end. Air blades are provided on each end of the luminaire to control air flow to the plenum.



Return air - noise criteria

All luminaire sizes

| CFM | | | | | | | | | |
|------------------|---------|-----|----|----|----|----|----|----|-----|
| Mode | | 27 | 37 | 53 | 62 | 71 | 80 | 90 | 102 |
| Air ¹ | NC (dB) | <15 | 24 | 25 | 29 | 33 | 35 | 38 | 40 |

| CFM | | | | | | | | | |
|---------------------------|---------|--|-----|----|----|----|----|----|----|
| Mode | | | 31 | 38 | 45 | 51 | 61 | 65 | 74 |
| Air+Controls ² | NC (dB) | | <15 | 19 | 21 | 25 | 28 | 30 | 34 |

1. Air-only option includes air return lens retainers and pattern control blades on both ends of luminaire.
2. Air+Controls includes the air return lens retainer and pattern control blade on one end of the luminaire.
Control lens retainer on the other with matching width.

2FG FluxGrid recessed 2x4

up to 7400 lumens

Photometry

2x4 FluxGrid recessed LED, base configuration, 4200 nominal delivered lumens

LER - 124

| | |
|--------------------|------------------------|
| Catalog No. | 2FGG42B840-4-D-UNV-DIM |
| Test No. | 36564 |
| S/MH | 1.2 |
| Lamp Type | LED |
| Lumens | 4212 |
| Input Watts | 34 |

Comparative yearly lighting energy cost per 1000 lumens – **\$1.94** based on 3000 hrs. and \$.08 pwr KWH.

The photometric results were obtained in the Day-Brite laboratory which is NVLAP accredited by the National Institute of Standards and Technology.

Photometric values based on test performed in compliance with LM-79.

Candlepower

| Angle | End | 45 | Cross | Back-45 |
|-----------|------|------|-------|---------|
| 0 | 1567 | 1567 | 1567 | 1567 |
| 5 | 1541 | 1556 | 1559 | 1556 |
| 15 | 1467 | 1473 | 1476 | 1473 |
| 25 | 1323 | 1330 | 1339 | 1330 |
| 35 | 1124 | 1147 | 1165 | 1147 |
| 45 | 896 | 949 | 978 | 949 |
| 55 | 659 | 737 | 779 | 737 |
| 65 | 404 | 534 | 587 | 534 |
| 75 | 203 | 323 | 365 | 323 |
| 85 | 43 | 104 | 108 | 104 |

Light Distribution

| Degrees | Lumens | % Luminaire |
|--------------|--------|-------------|
| 0-30 | 1176 | 27.9 |
| 0-40 | 1893 | 44.9 |
| 0-60 | 3273 | 77.6 |
| 0-90 | 4215 | 100 |
| 0-180 | 4216 | 100 |

Average Luminance

| Zone | End | 45° | Cross |
|-----------|------|------|-------|
| 45 | 8102 | 8584 | 8845 |
| 55 | 7349 | 8219 | 8685 |
| 65 | 6120 | 8077 | 8890 |
| 75 | 5025 | 7991 | 9014 |
| 85 | 3186 | 7597 | 7905 |

Coefficients of Utilization

| EFFECTIVE FLOOR CAVITY REFLECTANCE 20 PER (pfc=0.20) | | | | | | | | | |
|--|-----|-----|-----|-----|-----|-----|-----|-----|--|
| pfc = | 20 | | | | | | | | |
| Ceil | | 80 | | | 70 | | | 50 | |
| Wall | 70 | 50 | 30 | 70 | 50 | 30 | 50 | 30 | |
| RCR | | | | | | | | | |
| 0 | 118 | 118 | 118 | 115 | 115 | 115 | 111 | 111 | |
| 1 | 108 | 103 | 98 | 106 | 101 | 96 | 96 | 93 | |
| 2 | 97 | 90 | 82 | 95 | 88 | 81 | 84 | 79 | |
| 3 | 90 | 79 | 70 | 86 | 77 | 69 | 73 | 68 | |
| 4 | 81 | 69 | 60 | 80 | 68 | 59 | 66 | 58 | |
| 5 | 76 | 63 | 54 | 72 | 60 | 53 | 58 | 52 | |
| 6 | 69 | 56 | 46 | 68 | 55 | 46 | 54 | 46 | |
| 7 | 65 | 51 | 41 | 63 | 50 | 41 | 48 | 40 | |
| 8 | 59 | 46 | 38 | 58 | 46 | 38 | 45 | 36 | |
| 9 | 56 | 42 | 34 | 55 | 41 | 34 | 40 | 34 | |
| 10 | 53 | 40 | 32 | 52 | 39 | 32 | 38 | 30 | |

2x4 FluxGrid recessed LED, standard configuration, 4300 nominal delivered lumens

LER - 119

| | |
|--------------------|------------------------|
| Catalog No. | 2FGG43L840-4-D-UNV-DIM |
| Test No. | 36563 |
| S/MH | 1.2 |
| Lamp Type | LED |
| Lumens | 4318 |
| Input Watts | 36 |

Comparative yearly lighting energy cost per 1000 lumens – **\$2.02** based on 3000 hrs. and \$.08 pwr KWH.

The photometric results were obtained in the Day-Brite laboratory which is NVLAP accredited by the National Institute of Standards and Technology.

Photometric values based on test performed in compliance with LM-79.

Candlepower

| Angle | End | 45 | Cross | Back-45 |
|-----------|------|------|-------|---------|
| 0 | 1613 | 1613 | 1613 | 1613 |
| 5 | 1587 | 1602 | 1604 | 1602 |
| 15 | 1511 | 1517 | 1520 | 1517 |
| 25 | 1362 | 1369 | 1380 | 1369 |
| 35 | 1157 | 1182 | 1199 | 1182 |
| 45 | 922 | 978 | 1006 | 978 |
| 55 | 679 | 759 | 800 | 759 |
| 65 | 416 | 514 | 605 | 514 |
| 75 | 209 | 332 | 377 | 332 |
| 85 | 44 | 106 | 111 | 106 |

Light Distribution

| Degrees | Lumens | % Luminaire |
|--------------|--------|-------------|
| 0-30 | 1210 | 28.0 |
| 0-40 | 1948 | 45.1 |
| 0-60 | 3367 | 77.9 |
| 0-90 | 4320 | 100 |
| 0-180 | 4321 | 100 |

Average Luminance

| Zone | End | 45° | Cross |
|-----------|------|------|-------|
| 45 | 8341 | 8843 | 9099 |
| 55 | 7569 | 8460 | 8924 |
| 65 | 6302 | 7782 | 9152 |
| 75 | 5161 | 8208 | 9321 |
| 85 | 3259 | 7773 | 8155 |

Coefficients of Utilization

| EFFECTIVE FLOOR CAVITY REFLECTANCE 20 PER (pfc=0.20) | | | | | | | | | |
|--|-----|-----|-----|-----|-----|-----|-----|-----|--|
| pfc = | 20 | | | | | | | | |
| Ceil | | 80 | | | 70 | | | 50 | |
| Wall | 70 | 50 | 30 | 70 | 50 | 30 | 50 | 30 | |
| RCR | | | | | | | | | |
| 0 | 118 | 118 | 118 | 115 | 115 | 115 | 111 | 111 | |
| 1 | 108 | 103 | 98 | 106 | 101 | 96 | 96 | 93 | |
| 2 | 97 | 90 | 82 | 95 | 88 | 81 | 84 | 79 | |
| 3 | 90 | 79 | 70 | 86 | 78 | 69 | 75 | 68 | |
| 4 | 81 | 69 | 60 | 80 | 68 | 60 | 66 | 58 | |
| 5 | 76 | 63 | 54 | 73 | 61 | 53 | 58 | 52 | |
| 6 | 69 | 56 | 47 | 68 | 56 | 46 | 54 | 46 | |
| 7 | 65 | 51 | 42 | 63 | 51 | 41 | 48 | 40 | |
| 8 | 59 | 46 | 38 | 58 | 46 | 38 | 45 | 36 | |
| 9 | 56 | 42 | 34 | 55 | 41 | 34 | 40 | 34 | |
| 10 | 53 | 40 | 32 | 52 | 39 | 32 | 38 | 30 | |

The information presented in this document is not intended as any commercial offer and does not form part of any quotation or contract.

