

# GENLYTE SOLUTIONS



## Bring elegance to your high ceiling spaces

3D printed lighting

Decorative High Bay  
IHB series







# Expect the unexpected

Break free from ordinary lighting.  
From industrial powerhouses to elegant spaces and beyond.

Experience the perfect balance of powerful performance and purposeful design.  
Our family of high bay luminaires deliver industry-leading efficacy, durability,  
and sustainability for every space – whether optimizing industrial  
operations or enhancing customer-facing environments.

# What we offer

All our products proudly meet the highest standards of the Buy American Act (BAA), ensuring quality, reliability, and support for local manufacturing.



**Efficacy:** up to 183lm/W  
**Lumen:** 10,000 – 33,000lm  
**CRI90:** 3000, 3500 & 4000K  
**Dimming:** 0 – 10V  
**Voltage:** 120 / 277 / 347V  
**Lifetime:** B50L70 > 100,000 hrs  
**Configuration:** Shapes, Sizes, Colors & Textures



**Efficacy:** up to 176lm/W  
**Lumen:** 10,000 – 33,000lm  
**CRI80:** 3000, 3500 & 4000K  
**Dimming:** 0 – 10V  
**Voltage:** 120 / 277 / 347V  
**Lifetime:** B50L70 > 50,000 hrs  
**Configuration:** Two sizes



**Efficacy:** up to 151lm/W  
**Lumen:** 20,000 – 25,000lm  
**CRI90:** 4000K & 5000K  
**Dimming:** 0 – 10V  
**Voltage:** 120 / 277V  
**Lifetime:** B50L70 > 50,000 hrs  
**Configuration:** Housing & Shade Colors



**Declare.**

# IHB Series

Make a statement, illuminate with purpose and care

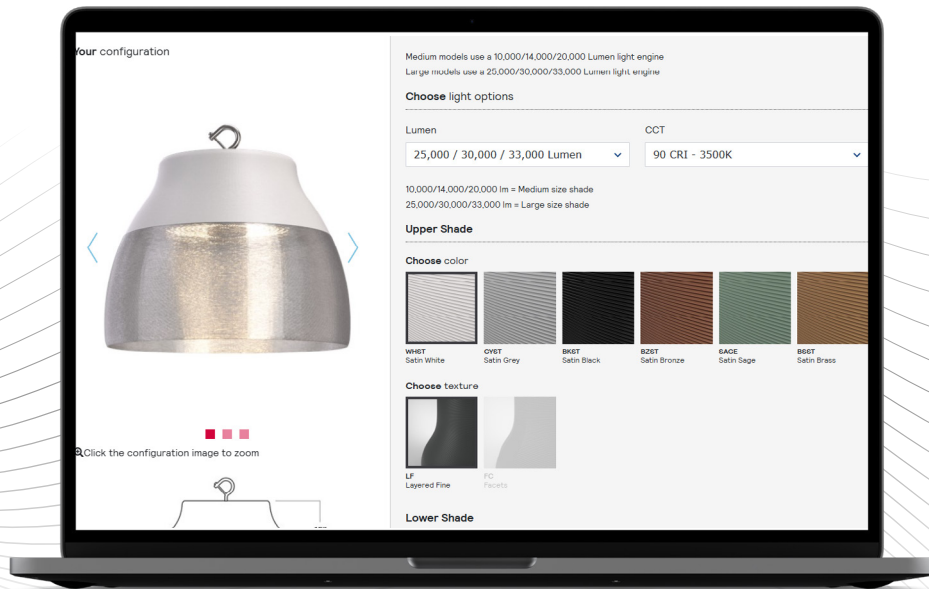
The second generation integrated high bay is printed with lightweight yet durable polycarbonate and offers standard CRI 90 with multiple lumen options. It comes in three styles, with multiple color and texture choices.



↑ Upper Shade: Satin Black







For spaces that represent your brand, the IHB High Bay delivers style, sustainability, and performance.

Bell Tall



### Sustainability

Made with 75% recycled materials and 3D printed to reduce waste and CO<sub>2</sub> emissions.

Conical Tall



### Performance

High CRI for vibrant, true-to-life illumination in customer-facing spaces.

### Excellence

Sleek designs tailored for modern, high-end aesthetics.

Conical Short



Cylinder Short



### Versatility

One solution for diverse environments such as grocery stores, large retailers, auto showrooms, and other high-ceiling settings.



## IHB series applications

### Customizable:

Wide variety of colors, textures, and styles to personalize customer specification options.

### Sustainable:

3D printed lighting produces less carbon emissions compared to traditionally manufactured luminaires.

### Color Rendering Index:

Standard 90CRI on all lumen packages.

### Field Selectable:

Switch between 3 lumen and 3 CCT options.

### Mounting:

Hook Mount, provided.  
Bracket Mount  
(available to order separately).

### Medium sizes:

60W/10,000lm  
80W/14,000lm  
110W/20,000lm

### Large sizes:

135W/25,000lm  
170W/30,000lm  
190W/33,000lm

### Input Voltage:

120/277/347V

### Quick delivery:

Created on demand and shipped in weeks.

### Lifetime:

B50 L70 at 100,000 hrs.

**Ambient Temp:** 40°C

**Frequency:** 50/60 Hz

**Power Factor:** > 0.90

**Dimming:** 0-10V

**UGR:** < 28

### Local Production:

Printed and assembled in Littlestown, PA.

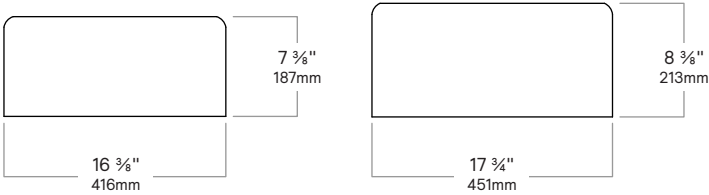
### Certification:

cULus listed, 5-year warranty, Declare. LBC Red List approved. IP20 & RoHS, IK05, DLC & DLC Premium on certain models.





# Cylinder

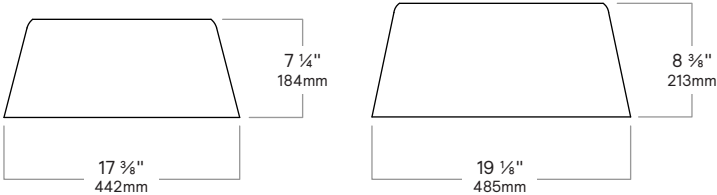


## Layered Fine texture upper shade

↑ Upper Shade color:

Satin Black	Satin Brass	Satin Bronze	Satin Grey	Satin Sage	Satin White
					

# Conical Short

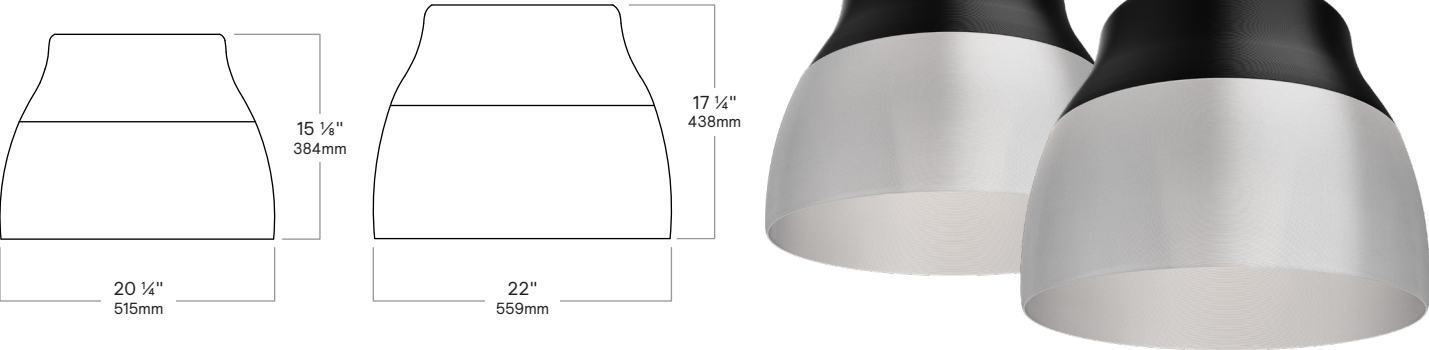


## Layered Fine texture upper shade

↑ Upper Shade color:

Satin Black	Satin Brass	Satin Bronze	Satin Grey	Satin Sage	Satin White
					

Bell



Layered Fine texture lower shade

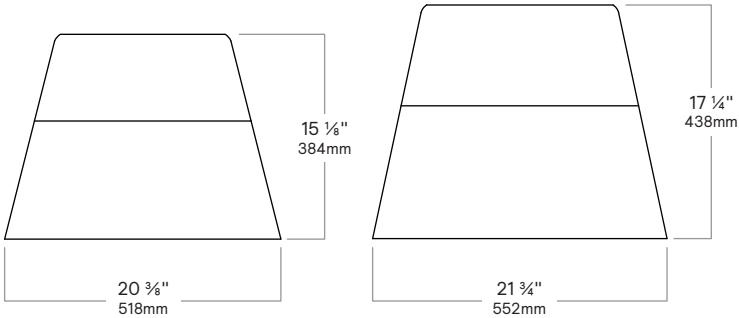


Tufted Coarse texture lower shade





Conical Tall



Layered Fine texture lower shade



Tufted Coarse texture lower shade



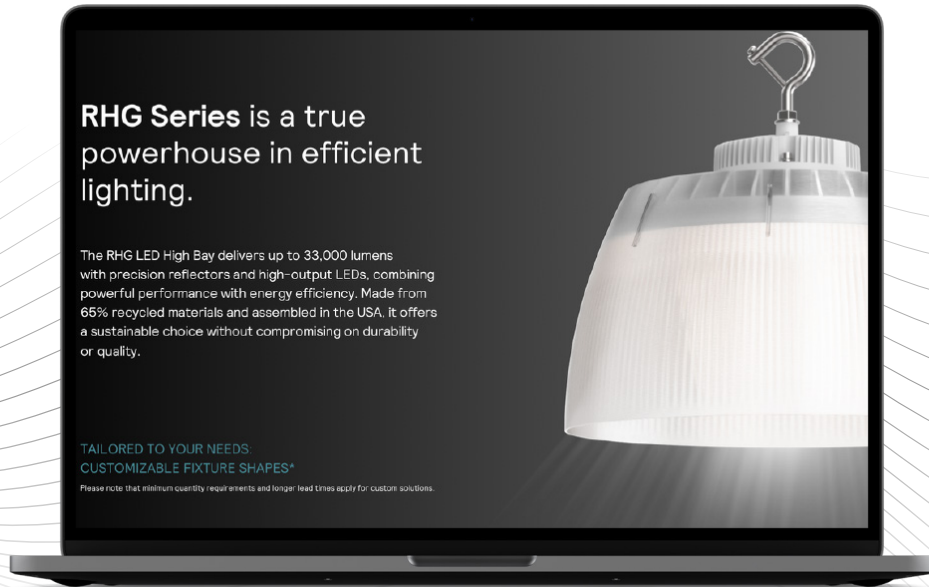
# RHG Series

Illuminate your operations with efficacy and precision

This LED High Bay delivers up to 33,000 lumens with precision reflectors and high-output LEDs, combining powerful performance with energy efficacy. Made from 75% recycled materials, it offers a sustainable choice without compromising on durability or quality.







When your operations demand high performance and energy savings, the RHG High Bay delivers.



### Outstanding Efficacy

Conquering the industry with 176 lumens per watt for maximum energy savings.



### Durable & Lightweight

Engineered for easy installation and long-lasting performance.



### Cost-Effective ROI

High-output performance ensures your investment pays off quickly, reducing operating costs.

### Sustainability at Scale

Made with 75% recycled materials and 3D-printed components, RHG is built for long-lasting performance and eco-conscious impact.



## RHG series applications

### Customizable:

Tufted reflector provides an aesthetic appeal and superior glare control with clear polycarbonate optical cover that protects LEDs.

### Sustainable:

3D printed lighting produces less carbon emissions compared to traditionally manufactured luminaires.

### Color Rendering Index:

Standard 80CRI on all lumen packages.

### Field Selectable:

Switch between 2 lumen and 3 CCT options.<sup>1</sup>

### Mounting:

Heavy duty hook provided for mount to customer-supplied suspension.<sup>2</sup>

### Housing:

Die-cast aluminum.

### Driver:

Surge protection is 6kV L-N & 6kV LN-GND.

### Input Voltage:

120/277/347V

### Finish:

Corrosion resistant gloss white paint.

### Lifetime:

Up to 70% (L70) >50,000 hrs.

### Sensors:

Standard as field install sensor ready (sensor sold separately).

### Local Production:

Printed and assembled in Littlestown, PA.

### Certification:

cULus Listed, 5-year warranty, RoHS compliant, Complies with FCC Rules and Regulations Part 15 Subpart B Class A.



1. Default is 4000K CCT and highest lumen output.

2. White 10ft power cord and dimming cord are standard.





RHG Series is a true powerhouse in efficient lighting and it's also customizable.



Conical



Umbrella



Orbit



Zenith



Halo

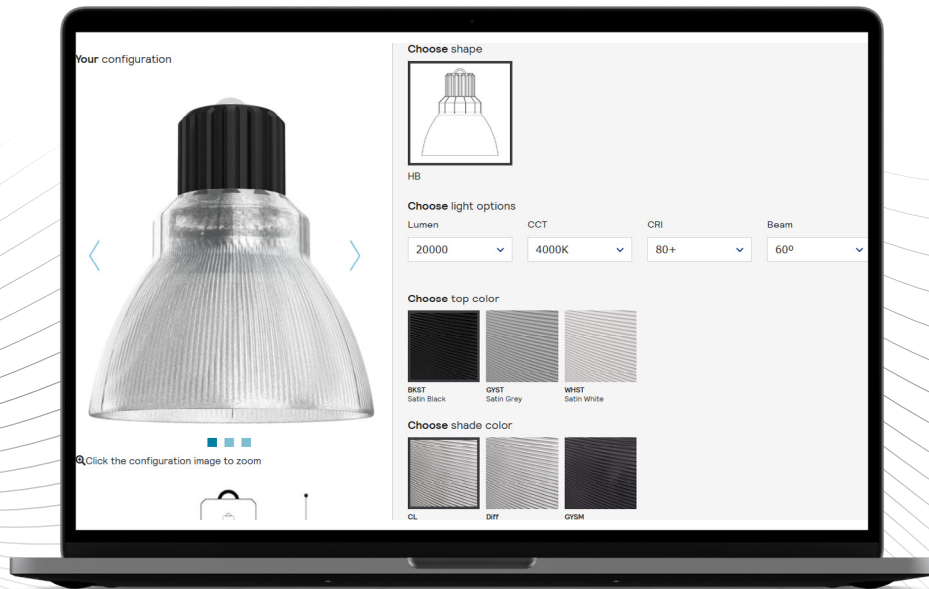
**Note:** These are examples of different custom options.  
Consult your sales representative for these or other custom solutions.

# PM Series

Versatility meets performance

Built for spaces that demand adaptability, the PM Series lamp-based solution provides a cost-effective solution with the same commitment to performance and sustainability as our IHB and RHG High Bays.





Efficacy, reliability, and adaptability in one solution



### Cost-Effective Excellence

The PM Series provides high-performance lighting without compromising on budget.



### Adaptable Design

Perfect for a variety of smaller spaces, from classrooms and workshops to retail and office environments.

### Eco-Conscious Production

Crafted with 75% recycled materials and 3D-printed locally to reduce environmental impact.



### Reliable Performance

Designed for long-lasting durability and consistent brightness.





## PM series applications

### Customizable:

Wide variety of colors, textures, and styles to personalize customer specification options.

### Sustainable:

3D printed lighting produces less carbon emissions compared to traditionally manufactured luminaires.

### Color Rendering Index:

Standard 80CRI on all lumen packages.

### Product Weight:

5 lbs without lamp & 7 lbs with lamp.

### Dimming:

All configurations are dependent on LED lamps.

### Quick delivery:

Created on demand and shipped in weeks.

### Frequency: 50/60 Hz

**Power Factor:** > 0.90

**Dimming:** 0-10V

### Input Voltage:

120/277V

### Photometrics:

Dependant on type of lamp used. Check lamp's spec sheet for details.

### Wattage:

Philips HID  
145W/20,000lm  
165W/25,000lm  
replacement lamps.

### Local Production:

Printed and assembled in Littlestown, PA.

### Certification:

cULus Listed,  
5-year warranty,  
IP20 & RoHS, & IK05.



Colors & Textures



CL Clear



DIFF Diffuse



GYSM Smokey Grey



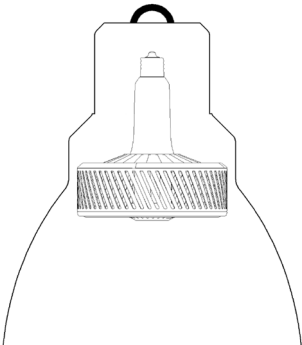
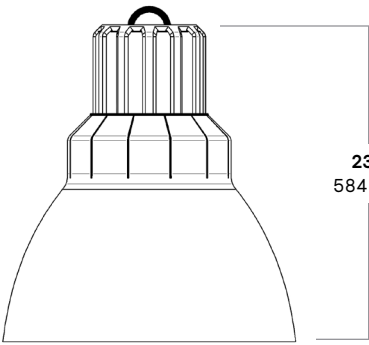
BKST Satin Black



WHST Satin White



GYST Satin Grey





# Emergency lighting you can count on

When it comes to emergency lighting, reliability is non-negotiable. Our high bay fixtures are enhanced with Bodine's proven emergency lighting solutions, offering:

**Diverse Emergency Options:**

Choose from emergency LED drivers, lighting inverters, and generator-compatible products tailored for your needs.

**3D-Printed Precision:**

Locally manufactured for faster delivery and unmatched quality.

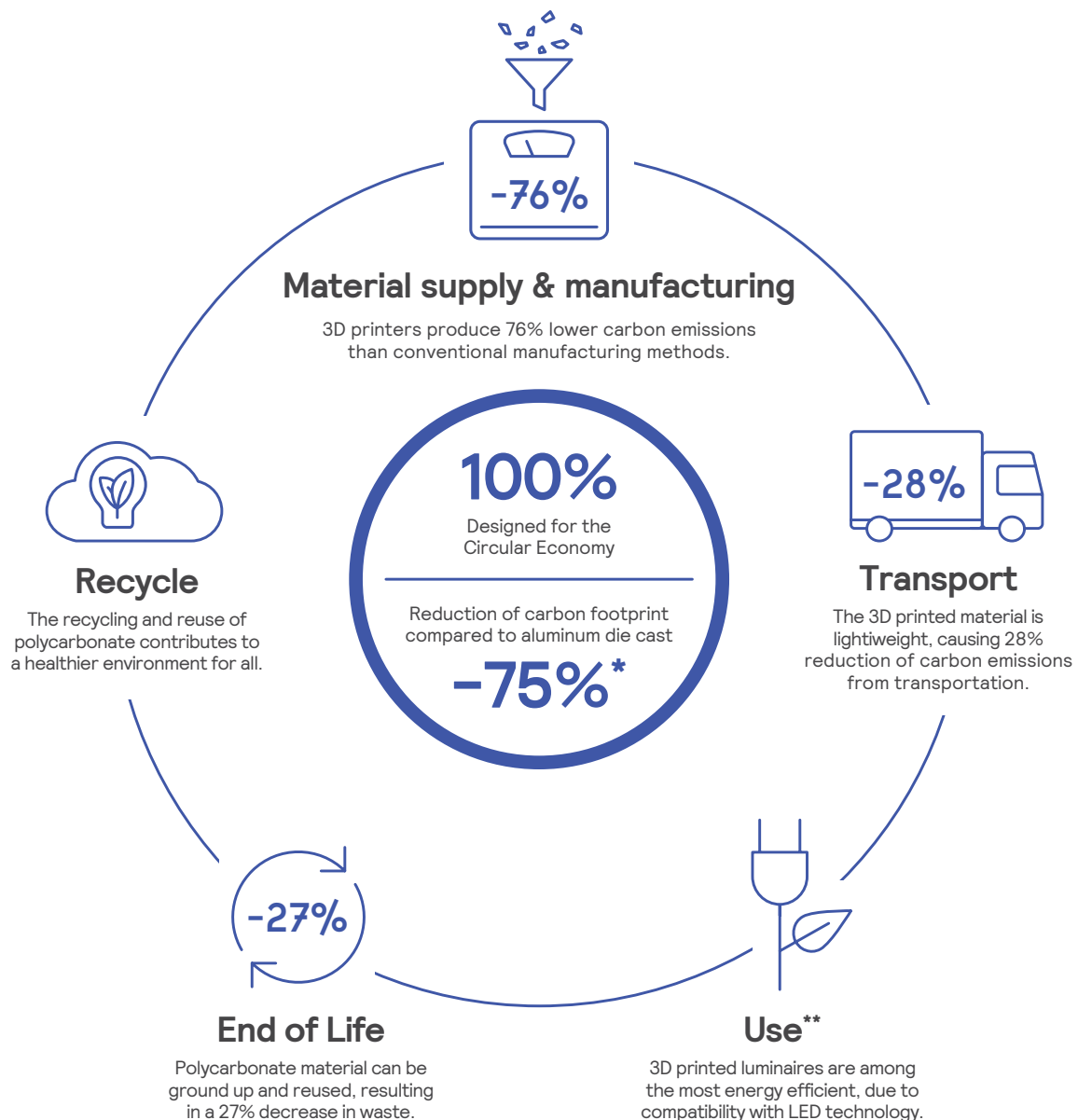
**Unmatched Experience:**

Bodine sets the standard for emergency lighting in commercial, industrial, and institutional applications with over 50 years of expertise.



# Ready to elevate your lighting?

Let's Design Your Space Together!  
Contact us today to create a lighting solution  
tailored to your brand's unique needs.



\* 75% reduction of carbon emissions from 3D printing, only compared to traditional downlights made from aluminum die cast. Only includes material supply, manufacturing and transport phases.

\*\* The use phase, though having the highest impact during the life cycle, is excluded as it is the same between the 2 compared products.

Note: Data based on comparison of a traditionally manufactured downlight using a die casted housing with a 3D printed downlight in polycarbonate. Data for other products will vary.



© 2025 Signify Holding. All rights reserved. The information provided herein is subject to change, without notice. Signify does not give any representation or warranty as to the accuracy or completeness of the information included herein and shall not be liable for any action in reliance thereon. The information presented in this document is not intended as any commercial offer and does not form part of any quotation or contract, unless otherwise agreed by Signify.



Signify North America Corp.  
400 Crossing Blvd, Suite 600  
Bridgewater, NJ 08807  
Telephone: 800-555-0050

Signify Canada Ltd.  
281 Hillmount Road,  
Markham, ON, Canada L6C 2S3  
Telephone: 800-668-9008

All trademarks are owned by Signify Holding or their respective owners.