

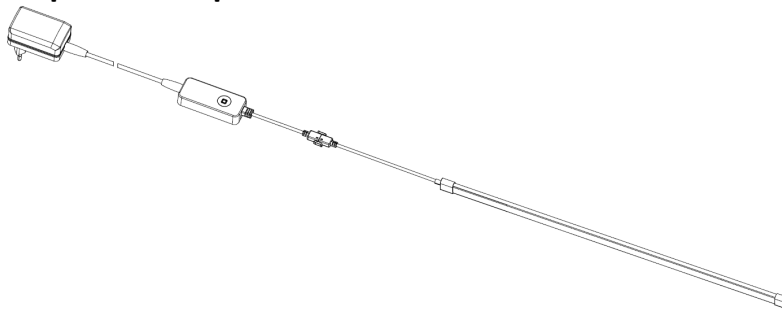
Removability Introduction

Disposal at End of Life

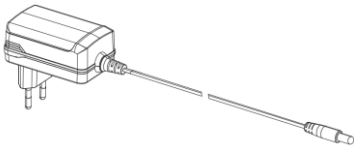
Light source reference control setting

Composition Explanation – PHI Neon strip Gen2

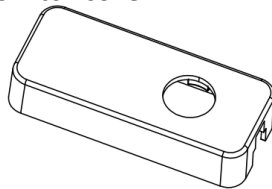
A. Composition Explanation



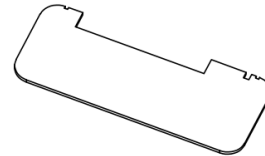
Control gear



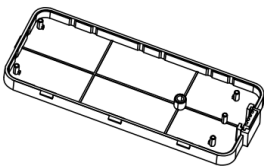
Switch cover



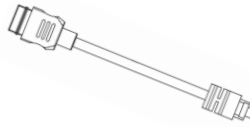
Switch



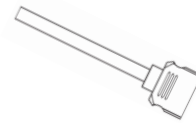
Switch housing



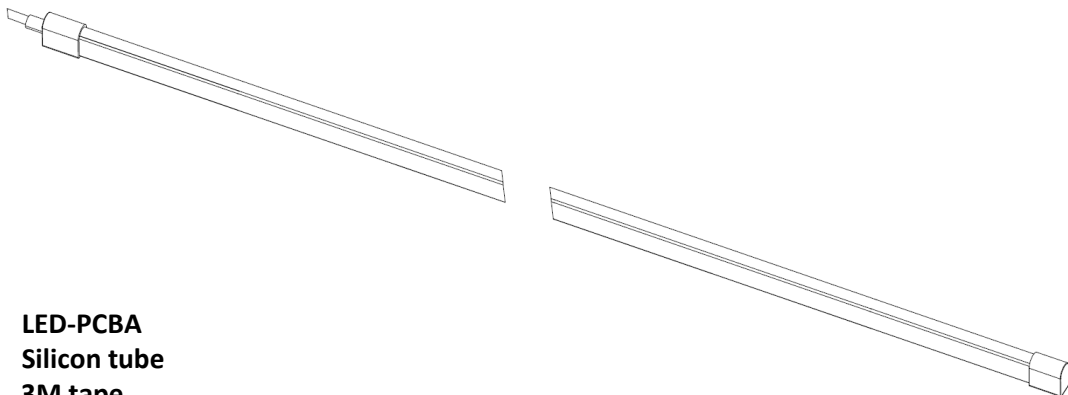
Connector



Connector2



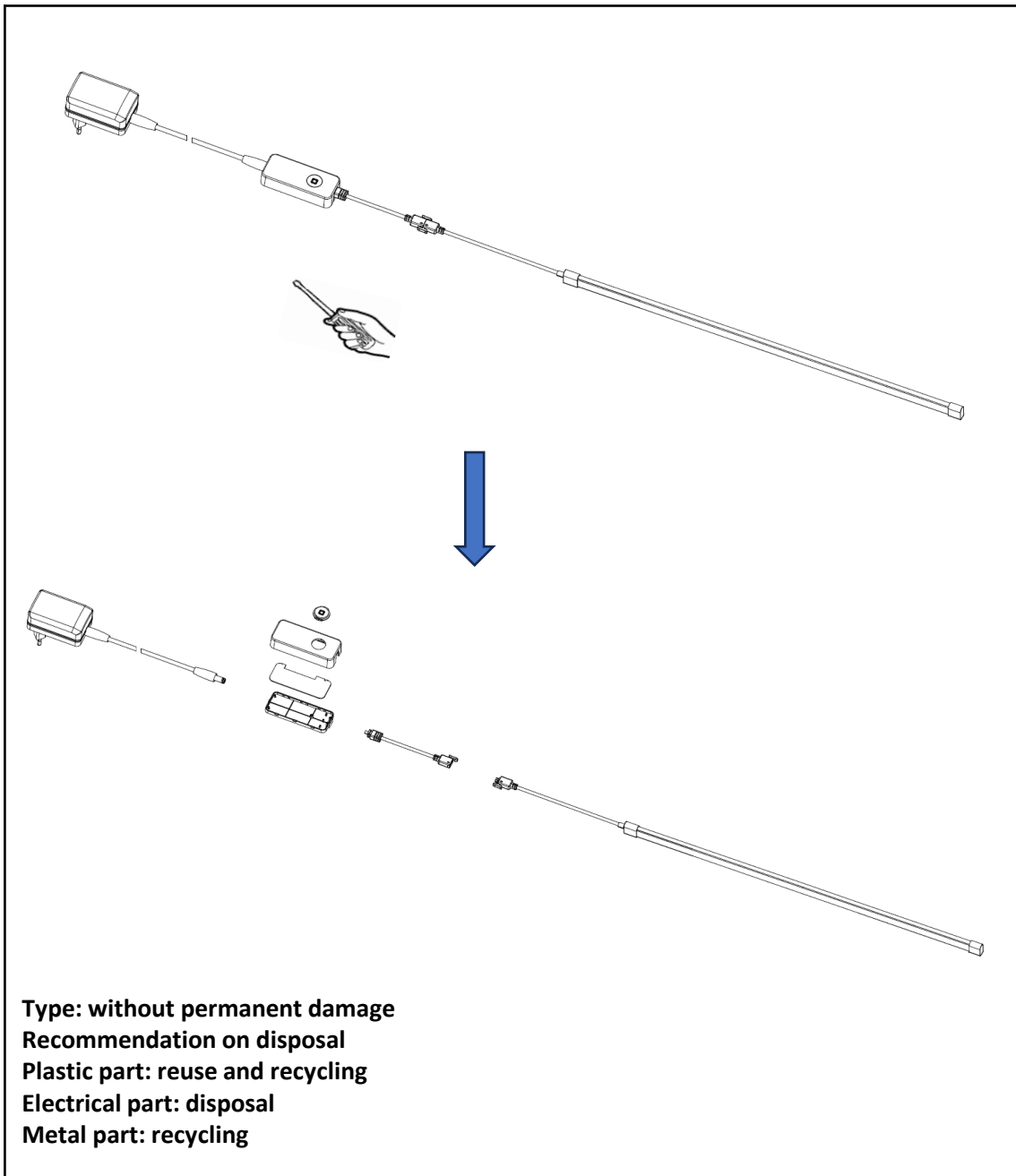
Light source:



- LED-PCBA
- Silicon tube
- 3M tape

Removability Introduction on Disposal at End of Life

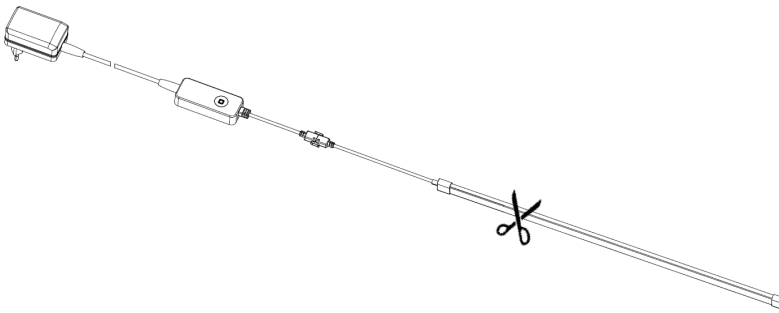
Composition Explanation – PHI Neon strip Gen2



Removability Introduction on Disposal at End of Life

Composition Explanation – PHI Neon strip Gen2

C. Setup the test



Neon Strip (cut 0.5m off the light strip)

D. Reference control setting

RGB strip is decorative purpose product, it is not intended to produce white color light, it is possibly to generate the white color light in someway, to get the RCS of light source, the possible way to find the RCS CCT point (non-preset point) by:

- To cut strip in length as above and with plug and control part, and power on
- To open WiZ APP → Connect the light strip to WiZ App → Custom → find the proper test color point → start the test

For the test point, you are suggested to find the CCT point in the white circle area
@ 2500K for 9290041262LSW, 9290041263LSW, 9290041267LSW

