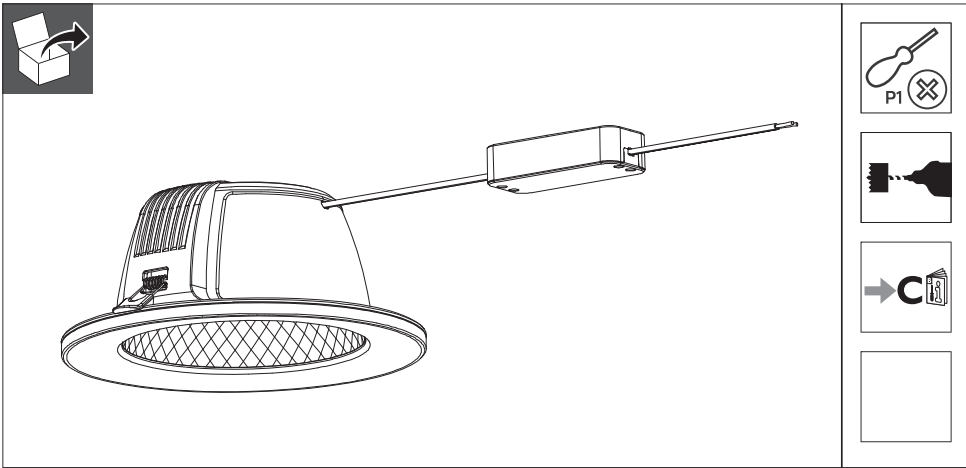


PHILIPS

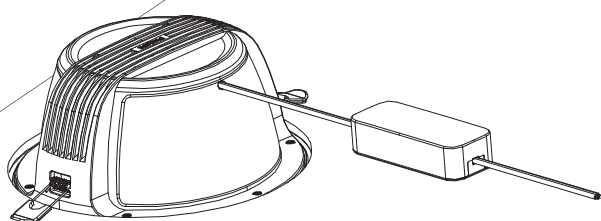
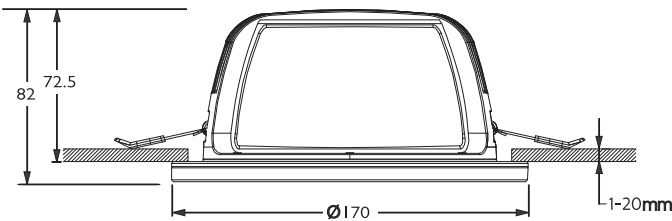
Ledinaire

DN070B

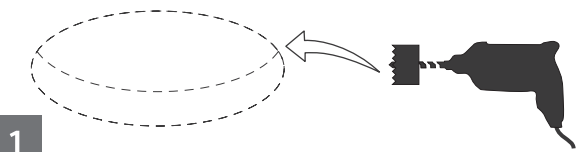
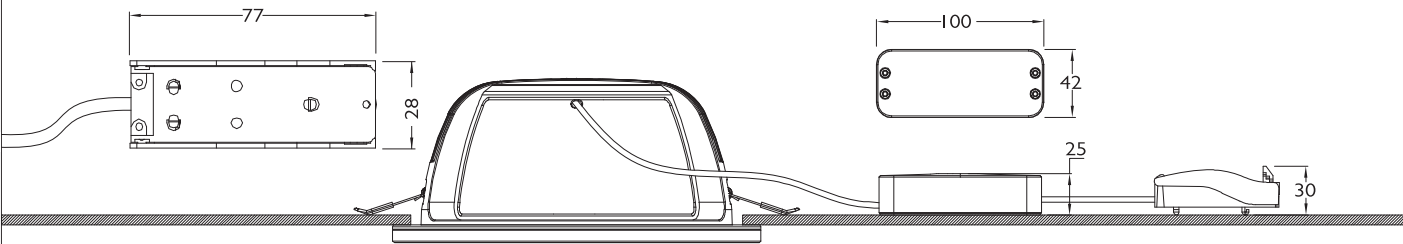
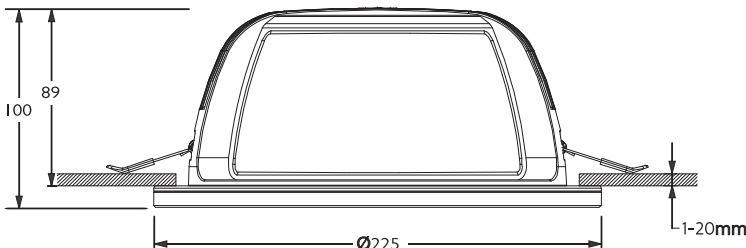


Model Name	Product Description	Lum. Power	Total Lumen	Beam Angle	CCT	CRI		Vol./Freq.	Dimmable	
9290031653	DN070B LED12/830 12W 220-240V D150 RD EU	12W	1200	60°	3000K	>80	150mm	220-240V~, 50/60Hz	No	0.44
9290031654	DN070B LED12/840 12W 220-240V D150 RD EU		1200		4000K		150mm			0.44
9290031655	DN070B LED24/830 24W 220-240V D200 RD EU	24W	2400		3000K		200mm			0.66
9290031656	DN070B LED24/840 24W 220-240V D200 RD EU		2400		4000K		200mm			0.66
9290032473	DN070B LED24/850 24W 220-240V D200 RD EU		2400		5000K		200mm			0.66

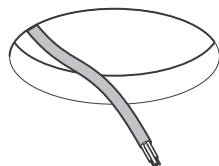
9290031653  
9290031654



9290031655  
9290031656  
9290032473

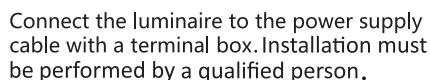


Model name	Hole size
9290031653 9290031654	Ø 150mm
9290031655 9290031656 9290032473	Ø 200mm

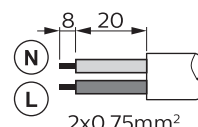


3241 659 23891

© 2022 Signify Holding  
Signify



3



2b

Min.V

IP20

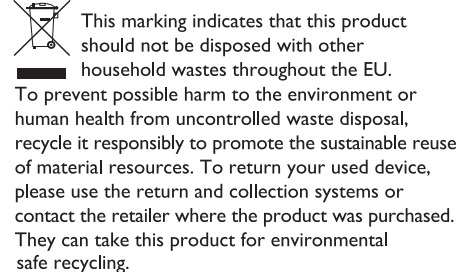
IP54



Electrical characteristics	12W	24W
I <sub>max</sub> (A)	8	8
T <sub>ref</sub> (μs)	30	50
MCB	Downlights Max.	
B-10 A	152	95
B-16 A	245	122
C-10 A	152	95
C-16 A	245	122

EN

1. For indoor use only.
2. Do not switch on before complete installation.
3. The luminaire shall be installed by a qualified electrician and wired in accordance with the latest IEE electrical regulations or the national requirements.
4. The external flexible cable or cord of this luminaire cannot be replaced; if the cord is damaged, the luminaire shall be destroyed.
5. The luminaire is complied with IEC 60598.
6. Luminaire must not be used or stored in corrosive environment where hazardous materials such as Sulphur, Chlorine, phthalates, etc, are present.
7. Non-replaceable light source: The light source of this luminaire is not replaceable; when the light source reaches its end of life the whole luminaire shall be replaced.
8. This product contains a light source of energy efficiency class F.
9. The product is not suitable for covering with thermally insulating material.



2/2