

PHILIPS

Build-on Spotlight

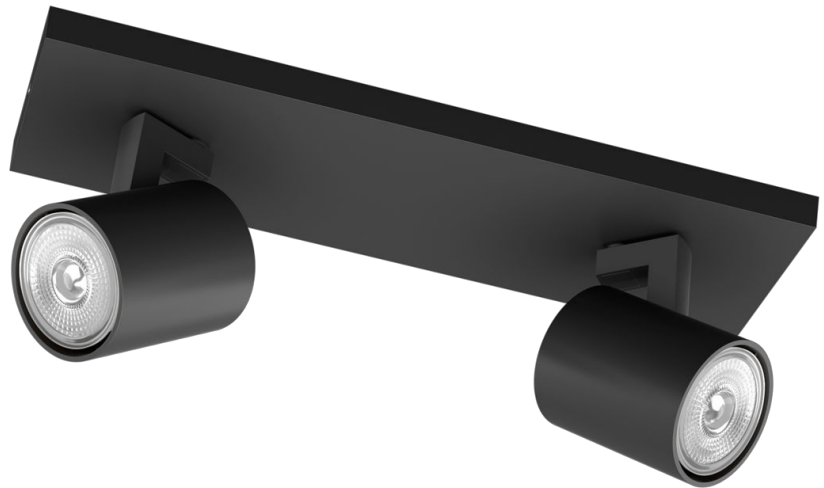
Ceiling/Wall Spotlights

Runner

Black

Build-on spotlight

8719514435315



Living joyfully in the moment

This industrial-style spot is small, slim and simple and fits perfectly into any modern interior. The black aluminium housing complements the light source flawlessly. A striking decorative item with a rotating light source.

Match your interior style

- Elegant and modern design

Special characteristics

- Adjustable spot head
- Elegant black

Designed for your living room and bedroom

- High-quality materials

Highlights

Contemporary appeal Adjustable spot head



Direct the light where you want it most by simply adjusting, rotating or tilting the spot head of the lamp.

Elegant black

Timeless and elegant, black has the intense, deep colour of ebony.

High-quality materials

This lamp is sculpted from layered patterns of high-quality materials with superior finishing. This ensures a solid and long lasting product that will enhance your home for many years to come.

Specifications

Bulb characteristics

- Intended use: Indoor

Design and finishing

- Colour: Black
- Material: Metal

Environmental

- Disposal of the product: At the end of (economic) life, dispose of the product in accordance with local rules. Do not dispose of the product with regular household waste. The correct disposal of your product will help to prevent potential negative consequences for the environment and human health.

Extra feature/accessory incl.

- Anti-rust anti-dust: No
- Bi-directional light beams: No
- click!FIX mounting: Yes
- Day-and-night sensor: No
- Defined light beams: No
- Dimmable: No
- Dimmable with remote control: No
- FFP - Frustration-Free Pack: No
- Fully weatherproof: No
- LED integrated: No
- Motion and day-and-night sensor: No
- Motion sensor: No
- Perfectly suited for creating ambience: Yes
- Perfectly suited for orientation lighting: Yes
- Portable: No
- Protection sleeve included: No
- Remote control included: No
- Resistant high-quality material: Yes
- Rotates freely in any direction: Yes
- Solar Energy: No
- Tilttable head (up-down): Manual
- USB charging: No
- Warm White Light: No
- Centrepiece: No
- Centrepiece: No
- Plug type: No plug

Miscellaneous

- Especially designed for: Bedroom, Living Room, Dining Room, Kitchen, Office, Hall
- Style: Contemporary
- Type: Ceiling/Wall Spotlights
- Extra Features: ClickFix

Product dimensions and weight

- Net weight: 0.64 kg
- Overall height: 109 mm
- Overall length: 305 mm
- Overall width: 90 mm

Service

- Warranty: 2 year(s)

Technical specifications

- Total lumen output fixture: -
- Mains power: AC 220-240
- Fitting/cap: GU10
- Wattage bulb included: 5.5W
- Maximum wattage replacement bulb: 20
- IP code: IP20 | Finger-protected
- Class of protection: Class I – Earthed
- Light source replaceable: Yes
- Number of light sources: 2

Packaging dimensions and weight

- EAN/UPC – product: 8719514435315
- Net weight: 0.64 kg
- Gross weight: 0.76 kg
- Height: 31.6 cm
- Length: 10.2 cm
- Width: 10.9 cm



Issue date: 2025-11-01
Version: 0.411

© 2025 Signify Holding. All rights reserved. Signify does not give any representation or warranty as to the accuracy or completeness of the information included herein and shall not be liable for any action in reliance thereon. The information presented in this document is not intended as any commercial offer and does not form part of any quotation or contract, unless otherwise agreed by Signify. Philips and the Philips Shield Emblem are registered trademarks of Koninklijke Philips N.V.

www.lighting.philips.com