

PHILIPS

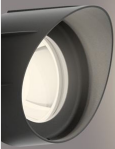
Ground Spots/Spike
Ground Spots/Spike 3W

Outdoor luminaires

GardenLink

Spotlight kit

Base kit 3 pack



8719514477353



A garden light that you can simply plug in, connect and enjoy

The Philips GardenLink low-voltage family offers a range of outdoor luminaires that you can easily and safely install. You can connect multiple lights to a single power supply and plug it into a standard socket, then easily add additional lights or reposition them whenever you like. Wiring is simple, and the low-voltage means that there's no danger of harm to you, your kids or your pets.

Ease of use

- Compatible with all GardenLink luminaires and accessories
- Easy to install with Twist & Lock connectors

Safe to use

- Extra safety with 12 V low voltage

Sustainable light solutions

- Long lifetime up to 25,000 hours

Advanced LED light

- 5-year warranty on LED system



8719514477353

Premium quality

- High quality material

Designed for outdoors

- IP44 – weatherproof

Highlights

Compatible with all GardenLink luminaires and accessories

Every GardenLink luminaire offers the same Twist & Lock connector for easy installation and connection. You can reposition the luminaires and accessories as your outdoor illumination needs change, adding light to every corner of your garden.

Easy to install with Twist & Lock connectors

Super-easy installation and connection with the products' Twist & Lock connectors. Simply plug the lights in and enjoy!

Extra safety with 12 V low voltage

Low-voltage (12 V) lights are safe to install without risk of electric shock – no professional electrician required.

Long lifetime up to 25,000 hours



Reliable high-quality LED light lasts up to 25,000 hours. You can rest easy knowing that you won't have to worry about maintenance for years, while enjoying the perfect garden light every night.

5-year warranty on LED system



In addition to the standard 2-year warranty offered for this luminaire, Philips also offers a 5-year warranty on the LED system (the LED module and driver).

High quality material



This Philips outdoor lamp is made of high-quality materials with superior finishing. This ensures a solid and long-lasting product which is resistant to corrosion and stains in all weather conditions

IP44 – weatherproof



This Philips outdoor light is especially designed for humid outdoor environments and has been tested rigorously to ensure water resistance. Its IP44 rating means that it has been certified to offer ingress protection against dust and splashing water – perfect for general outdoor use.

Specifications

Design and finishing

- Colour: Black
- Material: Metal

Durability

- Nominal lifetime: 25,000

Environmental

- Disposal of the product: At the end of (economic) life, dispose of the product in accordance with local rules. Do not dispose of the product with regular household waste. The correct disposal of your product will help to prevent potential negative consequences for the environment and human health.

Extra feature/accessory incl.

- Anti-rust anti-dust: Yes
- Day-and-night sensor: No
- Fully weatherproof: Yes
- LED integrated: Yes
- Motion sensor: No
- Solar Energy: No
- Warm White Light: Yes

Garden area

- Garden area: Garden and Patio

Light characteristics

- Colour rendering index (CRI): 80
- Colour temperature: 2700 K

Miscellaneous

- Especially designed for: Garden, Patio
- Style: Contemporary
- Type: Ground Spots/Spikes
- EyeComfort: No
- Extra Features: Low Voltage, Water Resistant

Product dimensions and weight

- Net weight: 1.4 kg
- Overall height: 119 mm
- Overall length: 72 mm
- Overall width: 118 mm

Service

- Warranty: 2 year(s)

Technical specifications

- Total lumen output fixture: 600
- Light colour: 2700K
- Mains power: 220–240 V
- Energy class included light source: F
- Maximum wattage replacement bulb: 3
- IP code: IP44 | Wire-protected and splash-proof
- Class of protection: Class II – Double Insulated
- Light source replaceable: Yes

Packaging dimensions and weight

- EAN/UPC – product: 8719514477353
- Net weight: 1.4 kg
- Gross weight: 1.68 kg
- Height: 23 cm
- Length: 16.5 cm
- Width: 27 cm



Issue date: 2025-11-12
Version: 0.366

© 2025 Signify Holding. All rights reserved. Signify does not give any representation or warranty as to the accuracy or completeness of the information included herein and shall not be liable for any action in reliance thereon. The information presented in this document is not intended as any commercial offer and does not form part of any quotation or contract, unless otherwise agreed by Signify. Philips and the Philips Shield Emblem are registered trademarks of Koninklijke Philips N.V.

www.lighting.philips.com