

PHILIPS

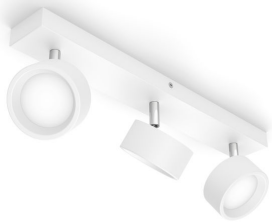
Bracia Ceiling/Wall
Spotlight 16.5W

Ceiling/Wall Spotlights

2700K

White

ClickFix



8720169174788



Stylish LED spotlights to brightly illuminate any room in your home

The Bracia family of LED spotlights is designed to light your home with warm white light. Timeless design and Philips quality offer a perfect solution that will last for many years. An adjustable head and wide beam angle ensure generous lighting coverage for any room, whether living room or hallway. Bracia spotlights are also perfect for lighting kitchen work surfaces or any area where you need an abundance of bright light.

Ease of use

- Adjustable spot head

Sustainable light solutions

- Up to 80% energy saving
- Long lifetime up to 25,000 hours

Advanced LED light

- 5-year warranty on LED system

Premium quality

- Long-lasting, high-quality materials

Special characteristics

- Bright light with uniform distribution

High-quality light

- EyeComfort – light that's easy on your eyes

Highlights

Adjustable spot head



Direct the light where you want it most by simply adjusting, rotating or tilting the spot head of the lamp.

Up to 80% energy saving



LED lights save up to 80% energy compared to traditional lighting with the same light output. When you buy a Philips LED light, you start saving money straight away. For each light source that you replace with an LED light, you will see immediate returns with a lower energy bill.

Long lifetime up to 25,000 hours



Reliable high-quality LED light lasts up to 25,000 hours. You can rest easy knowing that you won't have to worry about maintenance for years, while having the perfect light ambience in your home.

5-year warranty on LED system



In addition to the standard 2-year warranty offered for this luminaire, Philips also offers a 5-year warranty on the LED system (the LED module and driver).

Long-lasting, high-quality materials

This spot light is made of long-lasting, high-quality materials with superior finishing. This ensures a solid and durable product that will enhance and light up your home for many years to come.

Bright light with uniform distribution

To really light up your rooms, choose this uniform-distribution light which throws light evenly across the space.

EyeComfort – light that's easy on your eyes



Poor-quality light can cause eye strain. With many people spending time indoors, it's more important than ever to properly light your home. Our products meet stringent test criteria including flicker, strobe, glare, colour rendition and dimming effects to ensure that they meet EyeComfort requirements. This Philips LED luminaire not only delivers comfortable light, but also stays that way for the duration of its lifespan, delivering consistent light quality, output and colour for more than a decade.

Specifications

Bulb characteristics

- Intended use: Indoor

Design and finishing

- Colour: White
- Material: Metal

Durability

- Number of switch cycles: 15,000
- Nominal lifetime: 25,000

Environmental

- Disposal of the product: At the end of (economic) life, dispose of the product in accordance with local rules. Do not dispose of the product with regular household waste. The correct disposal of your product will help to prevent potential negative consequences for the environment and human health.

Extra feature/accessory incl.

- Adjustable spot head: Adjustable – rise and fall
- click!FIX mounting: Yes
- LED integrated: Yes

Light characteristics

- Beam angle: 110
- Colour rendering index (CRI): 80
- Colour temperature: 2700 K
- Luminous efficacy (rated) (nom.): 100

Miscellaneous

- Especially designed for: Kitchen, Bedroom, Dining Room, Living Room, Office, Hall
- Style: Contemporary
- Type: Ceiling/Wall Spotlights
- EyeComfort: Yes
- Extra Features: ClickFix

Other characteristics

- Lamp current: 112 mA

Product dimensions and weight

- Net weight: 0.63 kg
- Overall height: 125 mm
- Overall length: 430 mm
- Overall width: 80 mm

Service

- Warranty: 5 year(s)

Technical specifications

- Total lumen output fixture: 1650
- Bulb technology: LED
- Light colour: Warm white light
- Mains power: AC 220-240
- Energy class included light source: F
- Wattage bulb included: 16.5
- IP code: IP20 | Finger-protected
- Class of protection: Class I – Earthed
- Light source replaceable: No
- Number of light sources: 3

The bulb

- Software upgradable: No

What's supported

- Compatible with Effects feature: No
- Defined support period: Not applicable
- Compatible operating systems: Not applicable
- Communication protocol: Not applicable

Packaging dimensions and weight

- EAN/UPC - product: 8720169174788
- Net weight: 0.63 kg
- Gross weight: 0.82 kg
- Height: 44 cm
- Length: 10.4 cm
- Width: 13 cm



Issue date: 2026-04-15
Version: 0.361

© 2026 Signify Holding. All rights reserved. Signify does not give any representation or warranty as to the accuracy or completeness of the information included herein and shall not be liable for any action in reliance thereon. The information presented in this document is not intended as any commercial offer and does not form part of any quotation or contract, unless otherwise agreed by Signify. Philips and the Philips Shield Emblem are registered trademarks of Koninklijke Philips N.V.

www.lighting.philips.com