

# PHILIPS

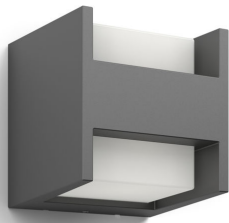
Arbour Wall Light  
3.8W

Outdoor luminaires

2700K

Antracite

Water Resistant

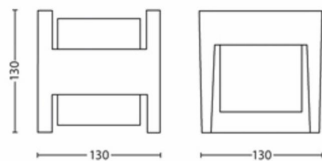


8720169263857



## Enjoy a beautiful garden with light, in a sustainable way

Philips Arbour LED outdoor wall light in anthracite grey suspends a cube of light within a durable die-cast aluminium cradle. The ingenious design catches the eye and casts two powerful beams of warm white light up and down your wall. These ultra-efficient outdoor lights use groundbreaking new technology to cut carbon emissions, reduce material waste and lower energy usage.



### Sustainable light solutions

- Long lifetime up to 50,000 hours
- Ultra Efficient
- Up to 80% energy saving

### Advanced LED light

- 5-year warranty on LED system

### Designed for outdoors

- IP44 – weatherproof

### Special characteristics

- Bi-directional light effect

### High-quality light

- Warm white light 2,700 K

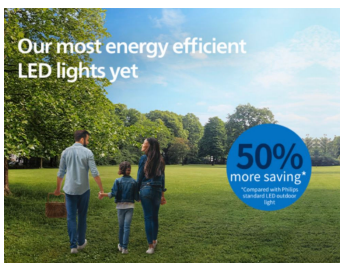
# Highlights

## Long lifetime up to 50,000 hours



Reliable high-quality LED light lasts up to 50,000 hours. You can rest easy knowing that you won't have to worry about maintenance for years, while enjoying the perfect garden light every night.

## Ultra Efficient



Consumes at least 50% less energy compared to equivalent standard LED lights from Philips.

## Up to 80% energy saving



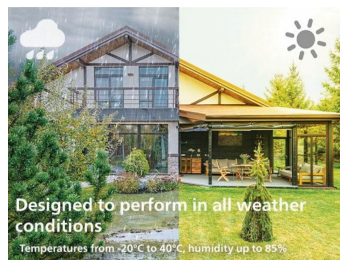
LED lights save up to 80% energy compared to traditional lighting with the same light output. When you buy a Philips LED light, you start saving money straight away. For each light source that you replace with an LED light, you will see immediate returns with a lower energy bill.

## 5-year warranty on LED system



In addition to the standard 2-year warranty offered for this luminaire, Philips also offers a 5-year warranty on the LED system (the LED module and driver).

## IP44 – weatherproof

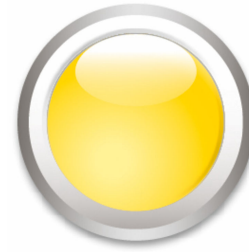


This Philips outdoor light is especially designed for humid outdoor environments and has been tested rigorously to ensure water resistance. Its IP44 rating means that it has been certified to offer ingress protection against dust and splashing water – perfect for general outdoor use.

## Bi-directional light effect

This Philips outdoor luminaire creates the perfect ambience in your garden or terrace with its bi-directional light effect.

## Warm white light 2,700 K



Did you know that different shades of white light are identified by different colour temperatures, measured in Kelvin (K)? Lower colour temperatures produce a warm, cosy white light, while higher colour temperatures produce a cool, more energising white light. This luminaire produces warm, relaxing light at 2,700 K.

# Specifications

## Design and finishing

- Colour: Anthracite
- Material: Metal

## Durability

- Nominal lifetime: 50,000

## Environmental

- Disposal of the product: At the end of (economic) life, dispose of the product in accordance with local rules. Do not dispose of the product with regular household waste. The correct disposal of your product will help to prevent potential negative consequences for the environment and human health.

## Extra feature/accessory incl.

- Adjustable spot head: Not adjustable
- Anti-rust anti-dust: Yes
- Bi-directional light beams: Yes
- Day-and-night sensor: No
- Fully weatherproof: Yes
- LED integrated: Yes
- Motion sensor: No
- Solar Energy: No
- Centrepiece: No

## Garden area

- Garden area: Garden and Patio

## Light characteristics

- Colour rendering index (CRI): 80
- Colour temperature: 2700 K

## Miscellaneous

- Especially designed for: Garden, Patio
- Style: Contemporary
- Type: Wall Lights
- EyeComfort: No
- LED innovations: UltraEfficient
- Extra Features: Water Resistant

## Power consumption

- Power: 4.3

## Product dimensions and weight

- Net weight: 0.6 kg
- Overall height: 130 mm
- Overall length: 130 mm
- Overall width: 130 mm

## Service

- Warranty: 5 year(s)

## Technical specifications

- Total lumen output fixture: 800
- Bulb technology: LED
- Light colour: Warm white light
- Mains power: AC 220-240
- Fixture dimmable: No
- Energy class included light source: B
- IP code: IP44
- Class of protection: Class II – Double Insulated
- Light source replaceable: Yes

## The bulb

- Software upgradable: No

## What's supported

- Compatible with Effects feature: No
- Defined support period: Not applicable
- Compatible operating systems: Not applicable
- Communication protocol: Not applicable

## Packaging dimensions and weight

- EAN/UPC – product: 8720169263857
- Net weight: 0.6 kg
- Gross weight: 0.65 kg
- Height: 13.5 cm
- Length: 13.5 cm
- Width: 13.5 cm



Issue date: 2026-05-30  
Version: 0.335

© 2026 Signify Holding. All rights reserved. Signify does not give any representation or warranty as to the accuracy or completeness of the information included herein and shall not be liable for any action in reliance thereon. The information presented in this document is not intended as any commercial offer and does not form part of any quotation or contract, unless otherwise agreed by Signify. Philips and the Philips Shield Emblem are registered trademarks of Koninklijke Philips N.V.

[www.lighting.philips.com](http://www.lighting.philips.com)