

PHILIPS

Blaise Wall Lights 1.5 W

Ultra-efficient Solar

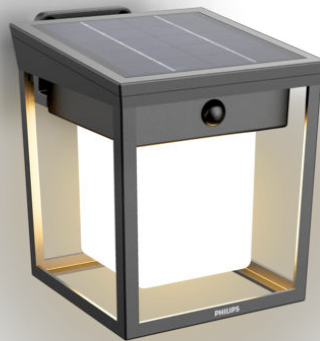
3000K

Anthracite

Linkable; Sensor; Solar; Water Resistant



8720169362048



Long-lasting solar-powered garden light for all seasons

Philips has developed an Ultra Efficient solar LED outdoor light that uses new technology to cut carbon emissions, reduce material waste and lower energy usage. With an amazing 50,000 hour lifetime it lasts more than 5 times longer than the Philips LED outdoor light equivalents. Just what is needed for a more sustainable planet.

Easy installation

- No wiring required

Sustainable light solutions

- Long lifetime up to 50,000 hours

Premium quality

- Durable design with PowerShield coating

Designed for outdoors

- IP44 – weatherproof

Special characteristics

- Dual-brightness light

8720169362048

High-quality light

- Bright white light 3,000 K

Highlights

No wiring required



This light is powered entirely by solar energy. No wiring is needed, making these lights easy to position and reposition anywhere in your garden or other outdoor area.

Long lifetime up to 50,000 hours



Reliable high-quality LED light lasts up to 50,000 hours. You can rest easy knowing that you won't have to worry about maintenance for years, whilst having the perfect light ambiance in your home.

Durable design



Protected by PowerShieldTo keep your outdoor lights in excellent condition, we use a high-performance powder coating powered by Interpon, an AkzoNobel brand. Tougher than traditional paints, it protects against fading, scratches, dents and rust for long-lasting beauty and performance.

IP44 – weatherproof

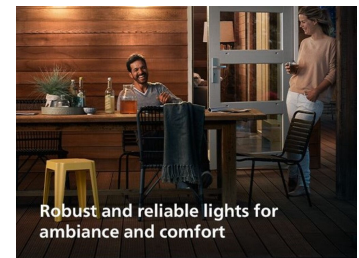


This Philips outdoor light is especially designed for humid outdoor environments and has been tested rigorously to ensure water resistance. Its IP44 rating means that it has been certified to offer ingress protection against dust and splashing water – perfect for general outdoor use.

Dual-brightness light

Create a flexible and appealing ambiance with the dual-brightness feature. The light dims when idle and automatically brightens when people are present, delivering the right level of light whenever you need it.

Bright white light 3,000 K



Did you know that different shades of white light are identified by different colour temperatures, measured in Kelvin (K)? Lower colour temperatures produce a warm, cosy white light, while higher colour temperatures produce a cool, more energising white light. This luminaire produces bright white light at 3,000 K.

Specifications

Design and finishing

- Colour: Anthracite
- Material: Metal, Plastic

Environmental

- Disposal of the product: At the end of (economic) life, dispose of the product in accordance with local rules. Do not dispose of the product with regular household waste. The correct disposal of your product will help to prevent potential negative consequences for the environment and human health.

Extra feature/accessory incl.

- 5 year warranty on the LED module: Yes
- Adjustable spot head: No
- Anti-rust anti-dust: Yes
- Bi-directional light beams: No
- Day-and-night sensor: Yes
- Fully weatherproof: Yes
- LED integrated: Yes
- Motion sensor: Yes
- Solar Energy: Yes
- Centrepiece: No

Light characteristics

- Beam angle: 120 degree(s)
- Colour rendering index (CRI): 80

Miscellaneous

- Especially designed for: Garden and Patio
- Style: Contemporary
- Type: Wall Lights
- EyeComfort: No
- LED innovations: UltraEfficient
- Extra Features: Linkable, Sensor, Solar, Water Resistant

Power consumption

- Wattage: 1.5 W

Product dimensions and weight

- Net weight: 0.5 kg
- Height: 14 cm
- Length: 12 cm
- Width: 16 cm

Service

- Warranty: 5 year(s)

Technical specifications

- Lifetime up to: 50,000 h
- Total lumen output fixture: 250/20
- Light colour: 3000
- Mains power: DC 4
- Fixture dimmable: No
- IP code: IP44
- Class of protection: Class III
- Light source replaceable: No

Packaging dimensions and weight

- EAN/UPC – product: 8720169362048
- Net weight: 0.5 kg
- Gross weight: 0.65 kg
- Height: 18.8 cm
- Length: 14.5 cm
- Width: 15.5 cm



Issue date: 2025-04-19
Version: 0.302

© 2025 Signify Holding. All rights reserved. Signify does not give any representation or warranty as to the accuracy or completeness of the information included herein and shall not be liable for any action in reliance thereon. The information presented in this document is not intended as any commercial offer and does not form part of any quotation or contract, unless otherwise agreed by Signify. Philips and the Philips Shield Emblem are registered trademarks of Koninklijke Philips N.V.

www.lighting.philips.com