

PHILIPS

Lois Wall Lights 24W

Ultra Efficient

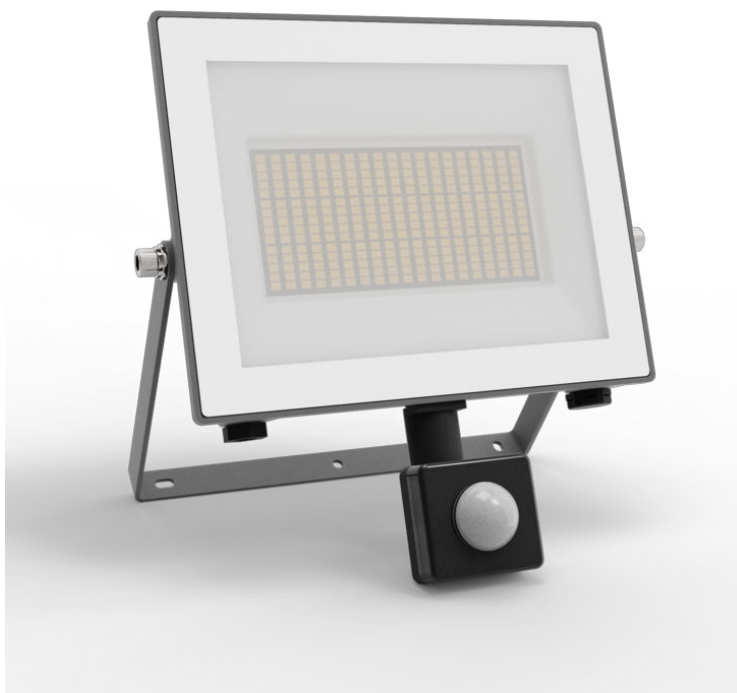
3000K

Anthracite

Water Resistant



8720169365421



Our most energy-efficient LED lights yet

Philips Lois Ultra Efficient outdoor floodlights use groundbreaking new technology to cut carbon emissions, reduce material waste and lower energy usage. With an amazing lifetime of 50,000 hours, these lights last more than twice as long as Philips LED outdoor equivalents, and use 50% less energy – just the thing for a more sustainable planet.

Sustainable light solutions

- Long lifetime up to 50,000 hours
- Ultra Efficient

Premium quality

- Durable design with PowerShield coating

Designed for outdoors

- IP44 – weatherproof

Special characteristics

- Motion sensor, for convenience and reassurance

High-quality light

- High light output

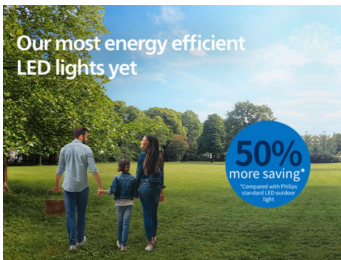
Highlights

Long lifetime up to 50,000 hours



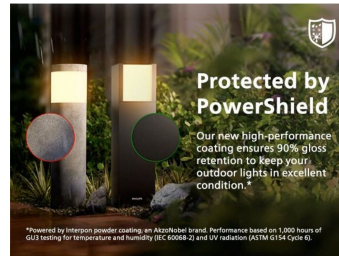
Reliable high-quality LED light lasts up to 50,000 hours. You can rest easy knowing that you won't have to worry about maintenance for years, while enjoying the perfect garden light every night.

Ultra Efficient



Consumes at least 50% less energy compared to equivalent standard LED lights from Philips.

Durable design



Protected by PowerShieldTo keep your outdoor lights in excellent condition, we use a high-performance powder coating powered by Interpon, an AkzoNobel brand. Tougher than traditional paints, it protects against fading, scratches, dents and rust for long-lasting beauty and performance.

IP44 – weatherproof



This Philips outdoor light is especially designed for humid outdoor environments and has been tested rigorously to ensure water resistance. Its IP44 rating means that it has been certified to offer ingress protection against dust and splashing water – perfect for general outdoor use.

Motion sensor, for convenience and reassurance



A motion sensor is included to welcome you when you return home or let you know when someone's coming.

High light output

Brighten up your home with high-quality light

Specifications

Design and finishing

- Colour: Anthracite
- Material: Metal

Durability

- Nominal lifetime: 50,000

Environmental

- Disposal of the product: At the end of (economic) life, dispose of the product in accordance with local rules. Do not dispose of the product with regular household waste. The correct disposal of your product will help to prevent potential negative consequences for the environment and human health.

Extra feature/accessory incl.

- Anti-rust anti-dust: Yes
- Bi-directional light beams: No
- Day-and-night sensor: Yes
- Fully weatherproof: Yes
- LED integrated: Yes
- Motion sensor: No
- Solar Energy: No
- Centrepiece: No

Light characteristics

- Colour rendering index (CRI): 80
- Colour temperature: 3000 K

Miscellaneous

- Especially designed for: Garden, Patio
- Style: Contemporary
- Type: Wall Lights
- EyeComfort: No
- LED innovations: UltraEfficient
- Extra Features: Water Resistant

Power consumption

- Power Consumption: 24

Product dimensions and weight

- Net weight: 0.575 kg
- Overall height: 210 mm
- Overall length: 200 mm
- Overall width: 60 mm

Service

- Warranty: 5 year(s)

Technical specifications

- Total lumen output fixture: 4450
- Light colour: 3000
- Mains power: AC 220-240
- Fixture dimmable: No
- Energy class included light source: B
- IP code: IP65 | Dust-tight and jet-proof
- Class of protection: Class I – Earthed
- Light source replaceable: No
- Number of light sources: 1

Packaging dimensions and weight

- EAN/UPC – product: 8720169365421
- Net weight: 0.57 kg
- Gross weight: 0.65 kg
- Height: 21.7 cm
- Length: 6.7 cm
- Width: 20.4 cm



Issue date: 2025-12-03
Version: 0.221

© 2025 Signify Holding. All rights reserved. Signify does not give any representation or warranty as to the accuracy or completeness of the information included herein and shall not be liable for any action in reliance thereon. The information presented in this document is not intended as any commercial offer and does not form part of any quotation or contract, unless otherwise agreed by Signify. Philips and the Philips Shield Emblem are registered trademarks of Koninklijke Philips N.V.

www.lighting.philips.com