

# PHILIPS

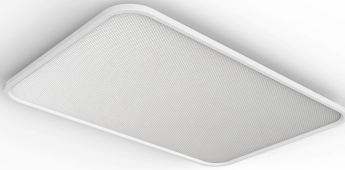
Super Slim Ceiling Light  
115W Rectangular

Ceiling Lights

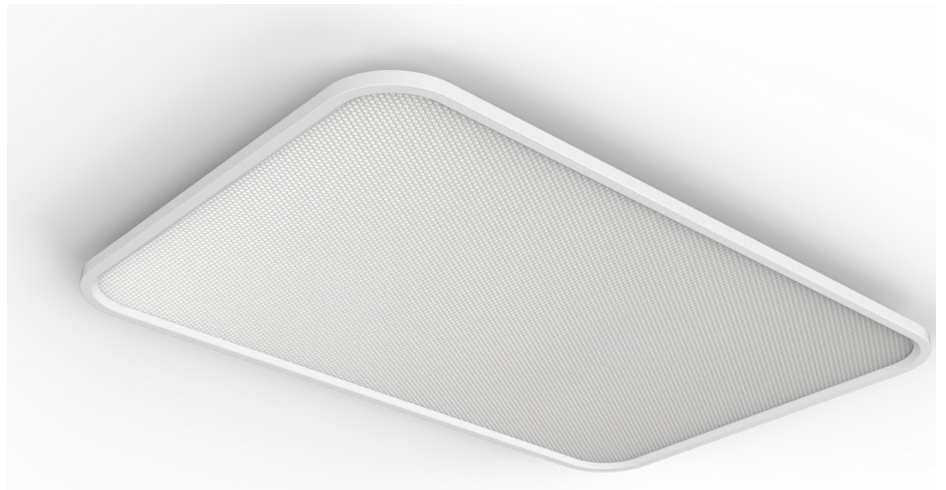
4000/2700/3300K

White

Dimmable



6941970608343



## High quality of light for a brighter future

The micro optics design and high quality LED to create uniform brightness light environment with less hazard from glare, blue light to build a 2nd space for Eye care

### Easy to experience

- Easy installation

### Control

- Step dimming

### High quality LED light that lasts for decades

- Reduced glare. Increased comfort.

### Eye Care

- High quality of LED light brings out vivid colors
- No blue light hazard, no visible flicker

# Highlights

## Easy installation

No more hassle in installation. Just fix or hang securely on the wall or ceiling, and plug in, now this luminaire is ready to light on.

## Step dimming

Select from different dimming levels to create the right mood for the moment.

## EyeComfort with Interlaced optics

Interlaced optics technology enhances the overall lighting experience in your every-day life. Imprinted with 3D patterns to help diffuse light, the micro-lens technology produce an even distribution of light which reduces glare significantly. This illumination is not only a soft and uniform light which brings more comfort to your eyes, but it also cleverly redistributes light for less glaring illumination in the lit area.

## High quality LED light

Premium LED technology integrated into this Philips lamp. While instantly turned on, it enables an optimal light output and brings out vivid colors to assist kids' identification for color when drawing or reading

## Biosecurity of light

The ceiling lamps falls within RG0 meaning that the use of these LED products is completely safe with regard to Blue Light Hazard. no visible flicker to create a pleasing light environment which easy on your eyes

# Specifications

## Bulb characteristics

- Intended use: Indoor
- Lamp shape: Rectangle

## Design and finishing

- Color: White
- Material: Metal

## Durability

- Average life (at 2.7 hrs/day): 15 year(s)
- Lumen maintenance factor: 70%
- Number of switch cycles: 15,000

## Environmental

- Disposal of the product: At the end of (economic) life, dispose the product according to local rules and do not dispose the product with regular household waste. The correct disposal of your product will help prevent potential negative consequences for the environment and human health.

## Extra feature/accessory incl.

- Dimmable with remote control: No
- LED integrated: Yes
- Remote control included: No

## Light characteristics

- Color consistency: 5 SDCM
- Color rendering index (CRI): 97
- Warm-up time to 60% light: <2

## Miscellaneous

- Especially designed for: Bedroom, Living Room, Dining Room, Kitchen, Home Office, Garage
- Style: Contemporary
- Type: Ceiling Lights
- EyeComfort: Yes
- Extra Features: Dimmable

## Other characteristics

- Lamp current: 540 mA
- Efficacy: 56 lm/W

#### Power consumption

- Power factor: 0.9

#### Product dimensions and weight

- Net weight: 9.6 kg
- Height: 5 cm
- Length: 90.5 cm
- Width: 60.5 cm

#### Packaging dimensions and weight

- Net weight: 9.6 kg
- Gross weight: 14.56 kg
- Height: 0
- Length: 0
- Width: 0

#### Service

- Warranty: 1 year(s)

#### Technical specifications

- Lifetime up to: 15,000 hour(s)
- Total lumen output fixture: 8500 @4000K
- Light color: 4000/2700/3000
- Mains power: AC 220-240
- Fixture dimmable: Step Dim - Do not use with dimmer
- LED: Yes
- IP code: IP20
- Class of protection: Class I



Issue date: 2025-04-19  
Version: 0.148

© 2025 Signify Holding. All rights reserved. Signify does not give any representation or warranty as to the accuracy or completeness of the information included herein and shall not be liable for any action in reliance thereon. The information presented in this document is not intended as any commercial offer and does not form part of any quotation or contract, unless otherwise agreed by Signify. Philips and the Philips Shield Emblem are registered trademarks of Koninklijke Philips N.V.

[www.lighting.philips.com](http://www.lighting.philips.com)