

# PHILIPS

## Stock Wall Light 5.5 W

myGarden

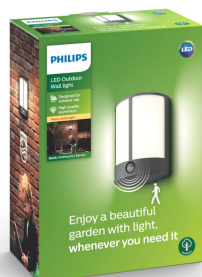
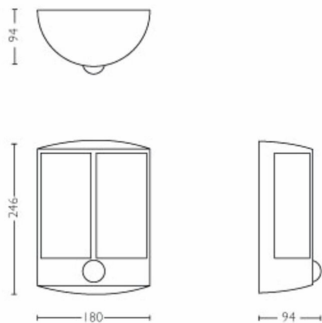
2700K

Antracite

Water Resistant



16465/93/16



## Always light when you come home

Philips Stock LED outdoor wall light in anthracite grey is made from durable die-cast aluminium and has a motion sensor for your personal safety. The half-lantern design maximises light distribution for plenty of diffuse warm white light.

### Sustainable light solutions

- Energy saving
- High quality LED light
- Long operating life of up to 25 years
- Warm white light
- Philips offers a 5-year warranty on the LED module and driver

### Designed for your garden

- Motion sensor included, for convenience and reassurance
- IP44 - weatherproof

# Highlights

## Energy saving



This Philips energy-saving lamp conserves energy compared with traditional light sources, helping you to save money on your electricity bills and do your bit for the environment.

## High quality LED light



The LED technology integrated into this Philips lamp is a unique solution developed by Philips. It turns on instantly, enables an optimal light output and brings out vivid colours in your home.

## Long operating life



A light source you can trust. The LED bulb, delivered with this Philips LED lamp, will last up to 25,000 hours (which equals 25 years on the basis of an average use of 3 hours/day with at least of 13,000 on/off switching cycles). It feels so good to think that you won't have to worry about maintenance or light bulb replacement while having the perfect light ambience in your home.

## Warm white light



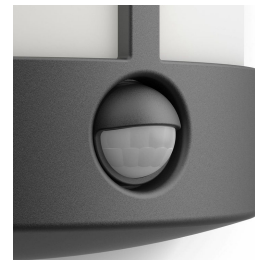
Light can have different colour temperatures, indicated in units called Kelvin (K). Lamps with a low Kelvin value produce a warm, more cosy light, while those with a higher Kelvin value produce a cool, more energising light. This Philips lamp offers warm white light for a cosy atmosphere.

## 5-year warranty on LED system



On top of the standard 2-year warranty for this lamp, Philips offers a 5-year warranty on the LED system, meaning the LED module and the driver in this lamp.

## Motion sensor included



A motion sensor is included to welcome you when you return home or let you know when someone has arrived. When the sensor detects movement, the lamp switches on automatically.

**IP44 - weatherproof**

This Philips outdoor light is especially designed for humid outdoor environments. It was tested rigorously to ensure its water resistance. The IP level is described by two figures: the first one refers to the protection level against dust, the second against water. This outdoor light is designed with IP44: it is protected against splashing

water. This product is most commonly used and ideal for general outdoor use.

## Specifications

**Design and finishing**

- Colour: Anthracite
- Material: Metal

**Durability**

- Nominal lifetime: 25,000

**Environmental**

- Disposal of the product: At the end of (economic) life, dispose of the product in accordance with local rules. Do not dispose of the product with regular household waste. The correct disposal of your product will help to prevent potential negative consequences for the environment and human health.

**Extra feature/accessory incl.**

- Fully weatherproof: Yes
- LED integrated: Yes
- Motion sensor: Yes

**Garden area**

- Garden area: Garden and Patio

**Miscellaneous**

- Especially designed for: Garden, Patio
- Style: Contemporary
- Type: Wall Lights
- EyeComfort: No
- Extra Features: Water Resistant

**Product dimensions and weight**

- Net weight: 0.640 kg
- Overall height: 246 mm
- Overall length: 180 mm
- Overall width: 88 mm

**Service**

- Warranty: 2 year(s)

**Technical specifications**

- Total lumen output fixture: 600 lm
- Mains power: 50 Hz
- Energy class included light source: F
- Wattage bulb included: 6 W
- IP code: IP44 | Wire-protected and splash-proof
- Class of protection: Class II – Double Insulated
- Light source replaceable: No
- Number of light sources: 1

**Packaging dimensions and weight**

- EAN/UPC – product: 8718696131312
- Net weight: 0.64 kg
- Gross weight: 0.76 kg
- Height: 25.6 cm
- Length: 10.6 cm
- Width: 18.6 cm



Issue date: 2025-09-13  
Version: 0.521

© 2025 Signify Holding. All rights reserved. Signify does not give any representation or warranty as to the accuracy or completeness of the information included herein and shall not be liable for any action in reliance thereon. The information presented in this document is not intended as any commercial offer and does not form part of any quotation or contract, unless otherwise agreed by Signify. Philips and the Philips Shield Emblem are registered trademarks of Koninklijke Philips N.V.

[www.lighting.philips.com](http://www.lighting.philips.com)