

# PHILIPS

Vynce Wall Light  
1.5W

Outdoor luminaires

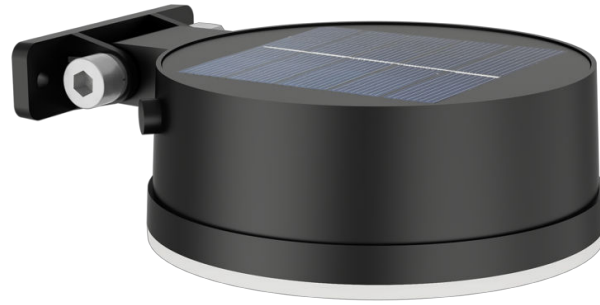
2700K

Black

Sensor;Solar;Water Resistant



8720169265622



## Enjoy a Beautiful garden with light, in a sustainable way

Philips Vynce wall light is a reliable solar light that lasts longer time, reduces energy consumption and supports sustainability.

### Easy installation

- No wiring required

### Sustainable light solutions

- Solar energy

### Advanced LED light

- High quality LED light

### Premium quality

- High quality material

### Designed for outdoors

- IP44 - weather proof

### High quality light

- Warm white light 2700K

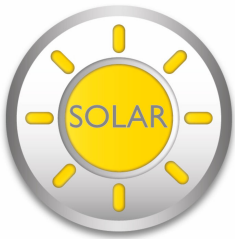
# Highlights

## No wiring required



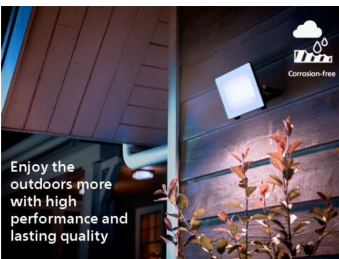
This light is powered entirely by solar energy. No wiring is needed, making these lights easy to position and reposition anywhere in your garden or other outdoor area.

## Solar energy



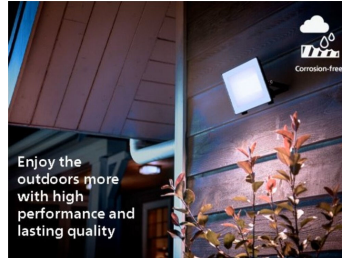
Philips Solar lights are designed to make the most of the energy they receive from the sun, for light that lasts longer. With no electricity consumption at all, it helps you save money on your electricity bills and do your bit for the environment.

## High quality LED light



These LED lights use a unique technology developed by Philips. They turn on instantly and produce optimal light output that brings out the vivid colors in your garden.

## High quality material



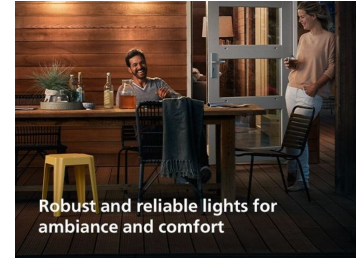
This Philips outdoor lamp is made of high quality materials with superior finishing. This ensures a solid and long lasting product which is resistant to corrosion and stains in all weather conditions

## IP44 - weather proof



This Philips outdoor light is especially designed for humid outdoor environments and has been tested rigorously to ensure water resistance. Its IP44 rating means that it has been certified to offer ingress protection against dust and splashing water—perfect for general outdoor use.

## Warm white light 2700K



Did you know that different shades of white light are identified by different color temperatures, measured in Kelvin (K)? Lower color temperatures produce a warm, cozy white light, while higher color temperatures produce a cool, more energizing white light. This luminaire produces warm, relaxing light at 2700 K.

# Specifications

## Design and finishing

- Color: Black
- Material: Plastic

## Environmental

- Disposal of the product: At the end of (economic) life, dispose the product according to local rules and do not dispose the product with regular household waste. The correct disposal of your product will help prevent potential negative consequences for the environment and human health.

## Extra feature/accessory incl.

- 5 years warranty on the LED module: Yes
- Adjustable spot head: No
- Anti rust anti dust: Yes
- Bi-directional light beams: No
- Day-and-night sensor: Yes
- Fully weatherproof: Yes
- LED integrated: Yes
- Motion sensor: No
- Solar Energy: Yes
- Warm White Light: Yes
- Centerpiece: No

## Garden area

- Garden area: Garden & Patio

## Light characteristics

- Color rendering index (CRI): 80

## Miscellaneous

- Especially designed for: Garden & Patio
- Style: Contemporary
- Type: Wall Lights
- EyeComfort: No
- Extra Features: Solar, Water Resistant, Dusk to Dawn

## Product dimensions and weight

- Net weight: 0.272 kg
- Height: 4.6 cm
- Length: 14.1 cm
- Width: 11.2 cm

## Service

- Warranty: 2 year(s)

## Technical specifications

- Lifetime up to: 15,000 hour(s)
- Total lumen output fixture: 200
- Light color: 2700
- Mains power: 3.3 V
- Fixture dimmable: No
- Maximum wattage replacement bulb: 1.5 W
- IP code: IP44
- Class of protection: Class III
- Light source replaceable: No

## Packaging dimensions and weight

- EAN/UPC - product: 8720169265622
- Net weight: 0.27 kg
- Gross weight: 0.31 kg
- Height: 14 cm
- Length: 5.4 cm
- Width: 11.7 cm



Issue date: 2025-02-07  
Version: 0.280

© 2025 Signify Holding. All rights reserved. Signify does not give any representation or warranty as to the accuracy or completeness of the information included herein and shall not be liable for any action in reliance thereon. The information presented in this document is not intended as any commercial offer and does not form part of any quotation or contract, unless otherwise agreed by Signify. Philips and the Philips Shield Emblem are registered trademarks of Koninklijke Philips N.V.

[www.lighting.philips.com](http://www.lighting.philips.com)