



Philips Uni Wall Mount Recessed: Urban recessed wall mount applies on surface, e.g., parking garages, entrances, outdoor terrace and wall in garden.

Uni Wall Mount Recessed

Public areas all seek for the most reliable and professional lighting solutions, e.g., parking areas, entrances, outdoor terrace, and wall in garden. The Philips Uni Wall Mount recessed can be installed easily in accordance with per scenario, delivering the optimized lighting to surroundings. The modern sleek design makes the fixture suitable to be installed either in renovation or new installation scenarios. The Philips Uni Wall Mount recessed help you achieve superb reliability and more. Same as other product range in Philips, the product is designed under a variety of Philips quality standard with a good price/quality ratio. Therefore, Philips Uni Wall Mount recessed offers another affordable, energy – efficient and stable choice in wall Mounting family.

Uni Wall Mount Recessed

Benefits

- Modern streamlined design.
- High Watt (12 W) recessed wall mount with the possibility to be customized to 20W.
- Multiple mounting option.

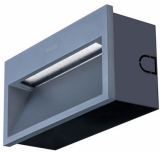
Features

- Die – cast aluminum housing and tempered glass diffuser.
- Textured architectural bronze powder coat finish.
- Various color can be customized to meet per customer need.

Application

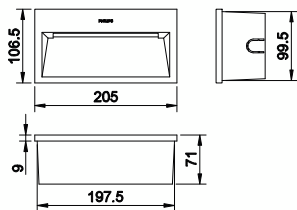
- Walkways
- Parks and Plazas
- Outdoor Parking areas

Versions



BWP40 SPP

Dimensional drawing



Uni Wall Mount Recessed

