



**Higher 30K lumen  
with high efficacy  
upto 190 lm/w to  
optimize battery and  
panel, world class  
components combined  
with most durable  
design.**

### **GreenVision Xceed Gen2 High Efficacy Solar**

Comprehensive range of solar street lights to 30000 lumens, with upto 190 lm/w efficacy, and option of hybrid versions. Suitable for major roads, highways and parking areas. configurable dimming profile and load wattage.

#### **Features**

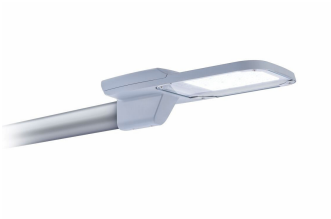
- High luminous efficacy upto 190lm/watt
- Compatible with multiple battery types ( LiFePO4, GEL)
- Available in both offgrid and hybrid versions
- Configurable dimming profile and load wattage
- Pressure die-cast aluminum housing for sturdiness and excellent thermal management

# GreenVision Xceed Gen2 High Efficacy Solar

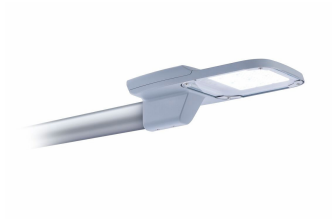
## Application

- Highways
- Street
- Road
- Parking

## Versions

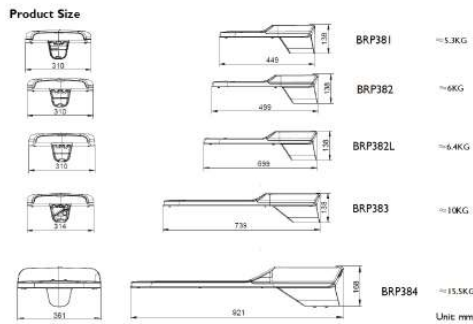
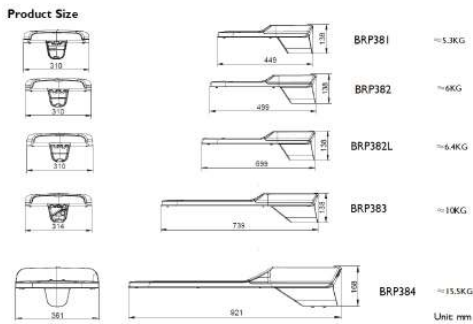


GreenVision Xceed Gen2 High Efficacy Solar



GreenVision Xceed Gen2 High Efficacy Solar

## Dimensional drawing



# GreenVision Xceed Gen2 High Efficacy Solar

Light Technical	
Correlated Color Temperature (Nom)	5700 K
Color rendering index (CRI)	>70
Operating and Electrical	
Grid connection type	Offgrid and hybrid (separate Hybrid Charger)
Controls and Dimming	
Dimmable	Yes
Configurability	Configurable
Solar dimming profile	As per charge controler settings
Mechanical and Housing	
Battery location	No
Housing Color	Gray
Ingress protection code	IP66
Overall height	138 mm
Overall width	310 mm
Approval and Application	
Ambient temperature range	-40 to +50 °C

## Mechanical and Housing

Order Code	Full Product Name	Overall length
911401651708	BRP382 LED 270/757 173W DM A5	499 mm
911401651808	BRP381 LED 220/757 140W DM A5	449 mm

