



# For top performance and sustainability

## MASTER LEDtube InstantFit HF T5

The Philips MASTER LEDtube integrates an LED light source into a traditional fluorescent form factor. Its unique design creates a perfectly uniform visual appearance, which cannot be distinguished from traditional fluorescents. These T5 lighting tubes are the right choice for absolute performance and are designed to stand up to everyday conditions. Unparalleled savings, thanks to low energy consumption and an exceptionally long lifetime, make these T5 LED tubes the choice for every demanding applications.

### Benefits

- Absolute performance that provides a solution for every application
- Unparalleled savings with low energy consumption and long lifetime
- Robust and reliable: stands up to everyday conditions

### Features

- Retrofit existing T5 lamps with HF ballast
- Compatible with a wide range of ballasts
- > 50% energy savings compared to fluorescent tubes with up to 155 lm/W
- Extra-long life up to 60,000 hours
- Ultra output up to 5,600 lm
- Enable implementation of HACCP, supported by product level NSF certificate
- No mercury

### Application

- Office
- Schools
- Retail

# MASTER LEDtube InstantFit HF T5

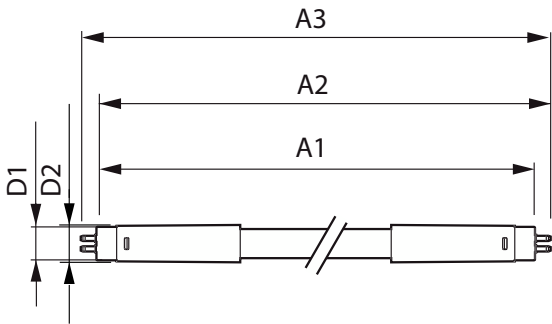
## Versions



MAS LEDtube HF 1500mm 26W G5 T5 HO

LEDtube 1200mm 17W G5

## Dimensional drawing



Product	D1	D2	A1	A2	A3
MAS LEDtube HF 1200mm HE	15.5 mm	18.8 mm	1,149 mm	1,156.1 mm	1,163.2 mm
16.5W 840 T5					
MAS LEDtube HF 1200mm HO	15.5 mm	19 mm	1,149 mm	1,156 mm	1,163 mm
26W 830 T5 OE					
MAS LEDtube HF 1200mm HO	15.5 mm	19 mm	1,149 mm	1,156 mm	1,163 mm
26W 840 T5 OE					
MAS LEDtube HF 1500mm HE	15.5 mm	18.8 mm	1,449 mm	1,456.1 mm	1,463.2 mm
20W 840 T5					
MAS LEDtube HF 1500mm HO	15.5 mm	19 mm	1,449 mm	1,456 mm	1,463 mm
26W 840 T5 OE					
MAS LEDtube HF 1500mm UO	15.5 mm	19 mm	1,449 mm	1,456 mm	1,463 mm
36W 840 T5					
MAS LEDtube HF 600mm HE 7W	15.7 mm	19 mm	549 mm	556 mm	563 mm
840 T5					

MASTER LEDtube InstantFit HF T5

General Information	
Cap base	G5
Switching Cycle	50,000
Nominal lifetime	60,000 h
Light Technical	
Beam angle (nom.)	200 degree(s)
Colour rendering index (CRI)	80
LLMF at end of nominal lifetime (nom.)	70 %
Operating and Electrical	
Starting time (nom.)	0.5 s
Controls and Dimming	
Dimmable	Yes – Check ballast compatibility
Mechanical and Housing	
Lamp Finish	Frosted
Bulb shape	T5

Light Technical

		Correlated Colour	Colour	
Order Code	Full Product Name	Temperature (Nom)	Code	Luminous Flux
929002352002	MAS LEDtube HF 1200mm HO 26W 830 T5 OE	3000 K	830	3,700 lm
929002352102	MAS LEDtube HF 1200mm HO 26W 840 T5 OE	4000 K	840	3,900 lm
929002352402	MAS LEDtube HF 1500mm HO 26W 840 T5 OE	4000 K	840	3,900 lm
929003154002	MAS LEDtube HF 1500mm UO 36W 840 T5	4000 K	840	5,600 lm
929001391102	MAS LEDtube HF 1200mm HE 16.5W 840 T5	4000 K	840	2,500 lm
929001391402	MAS LEDtube HF 1500mm HE 20W 840 T5	4000 K	840	3,000 lm
929003795202	MAS LEDtube HF 600mm HE 7W 840 T5	4000 K	840	1,050 lm

Operating and Electrical

Full Product		Line		Power
Order Code	Name	Input frequency	Frequency	Consumption
929002352002	MAS LEDtube HF 1200mm HO 26W 830 T5 OE	30 K to 60 K Hz	30K to 60K Hz	26 W
929002352102	MAS LEDtube HF 1200mm HO 26W 840 T5 OE	30 K to 60 K Hz	30K to 60K Hz	26 W
929002352402	MAS LEDtube HF 1500mm HO 26W 840 T5 OE	20 K to 140 K Hz	20K to 140K Hz	26 W
929003154002	MAS LEDtube HF 1500mm UO 36W 840 T5	30 K to 100 K Hz	30K to 100K Hz	36 W

Full Product		Line		Power
Order Code	Name	Input frequency	Frequency	Consumption
929001391102	MAS LEDtube HF 1200mm HE 16.5W 840 T5	30 K to 100 K Hz	30K to 100K Hz	16.5 W
929001391402	MAS LEDtube HF 1500mm HE 20W 840 T5	30 K to 100 K Hz	30K to 100K Hz	20 W
929003795202	MAS LEDtube HF 600mm HE 7W 840 T5	30 K to 100 K Hz	-	7 W

Temperature

		T-Case maximum
Order Code	Full Product Name	(nom.)
929002352002	MAS LEDtube HF 1200mm HO 26W 830 T5 OE	50 °C
929002352102	MAS LEDtube HF 1200mm HO 26W 840 T5 OE	50 °C
929002352402	MAS LEDtube HF 1500mm HO 26W 840 T5 OE	50 °C
929003154002	MAS LEDtube HF 1500mm UO 36W 840 T5	75 °C

		T-Case maximum
Order Code	Full Product Name	(nom.)
929001391102	MAS LEDtube HF 1200mm HE 16.5W 840 T5	65 °C
929001391402	MAS LEDtube HF 1500mm HE 20W 840 T5	65 °C
929003795202	MAS LEDtube HF 600mm HE 7W 840 T5	50 °C

Approval and Application

MASTER LEDtube InstantFit HF T5

Order Code	Full Product Name	Ambient temperature range	Energy consumption kWh/1,000 hours
929002352002	MAS LEDtube HF 1200mm HO 26W 830 T5 OE	-20°C to 45°C	26 kWh
929002352102	MAS LEDtube HF 1200mm HO 26W 840 T5 OE	-20°C to 45°C	26 kWh
929002352402	MAS LEDtube HF 1500mm HO 26W 840 T5 OE	-20°C to 45°C	26 kWh
929003154002	MAS LEDtube HF 1500mm UO 36W 840 T5	-20°C to 45°C	36 kWh
929001391102	MAS LEDtube HF 1200mm HE 16.5W 840 T5	-20°C to 45°C	17 kWh
929001391402	MAS LEDtube HF 1500mm HE 20W 840 T5	-20°C to 45°C	20 kWh
929003795202	MAS LEDtube HF 600mm HE 7W 840 T5	-20 to +45 °C	7 kWh

