



For top performance and sustainability

MASTER LED tube InstantFit HF T5

The Philips MASTER LEDtube integrates a LED light source into a traditional fluorescent form factor. Its unique design creates a perfectly uniform visual appearance, which cannot be distinguished from traditional fluorescent. These T5 lighting tubes are the right choice for absolute performance and are designed to stand up to everyday conditions. Unparalleled savings thanks to low energy consumption and an exceptionally long lifetime make these T5 LED tubes the choice for every demanding application.

Benefits

- Absolute performance that provides a solution for every application
- Unparalleled savings with low energy consumption and long lifetime
- Robust and reliable: stands up to everyday conditions

Features

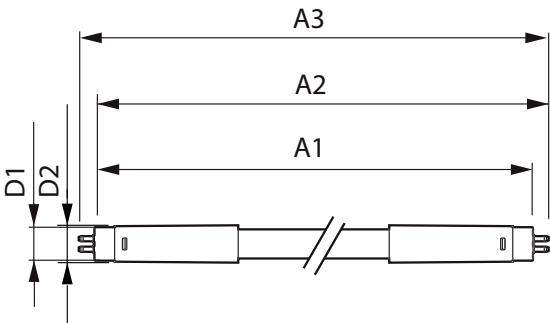
- Retrofit existing T5 lamps with HF ballast
- Compatible with a wide range of ballasts
- > 50% energy savings compared to fluorescent tubes with up to 155lm/W
- Extra-long life up to 60,000 hours
- Ultra output up to 5600lm
- Enable implementation of HACCP, supported by product level NSF certificate
- No mercury

Application

- Office
- Schools
- Retail

MASTER LED tube InstantFit HF T5

Dimensional drawing



Product	D1	D2	A1	A2	A3
MAS LEDtube HF 1200mm HE 16.5W 830 T5	15.5 mm	18.8 mm	1,149 mm	1,156.1 mm	1,163.2 mm
MAS LEDtube HF 1200mm HE 16.5W 840 T5	15.5 mm	18.8 mm	1,149 mm	1,156.1 mm	1,163.2 mm
MAS LEDtube HF 1200mm HE 16.5W 865 T5	15.5 mm	18.8 mm	1,149 mm	1,156.1 mm	1,163.2 mm
MAS LEDtube HF 1500mm HE 20W 830 T5	15.5 mm	18.8 mm	1,449 mm	1,456.1 mm	1,463.2 mm
MAS LEDtube HF 1500mm HE 20W 840 T5	15.5 mm	18.8 mm	1,449 mm	1,456.1 mm	1,463.2 mm
MAS LEDtube HF 1500mm HE 20W 865 T5	15.5 mm	18.8 mm	1,449 mm	1,456.1 mm	1,463.2 mm
MAS LEDtube HF 600mm HE 7W 830 T5	15.7 mm	19 mm	549 mm	556 mm	563 mm
MAS LEDtube HF 600mm HE 7W 840 T5	15.7 mm	19 mm	549 mm	556 mm	563 mm
MAS LEDtube HF 600mm HE 7W 865 T5	15.7 mm	19 mm	549 mm	556 mm	563 mm

General Information	
Cap-Base	G5
Switching Cycle	50,000
Nominal lifetime	60,000 hour(s)
Light Technical	
Beam Angle (Nom)	200 degree(s)
Color rendering index (CRI)	80
LLMF At End Of Nominal Lifetime (Nom)	70 %
Operating and Electrical	
Input Frequency	30K to 100K Hz
Starting Time (Nom)	0.5 s
Controls and Dimming	
Dimmable	Yes - Check ballast compatibility
Mechanical and Housing	
Bulb Finish	Frosted
Bulb Shape	T5

Light Technical

Order Code	Full Product Name	Correlated Color Temperature (Nom)	Color Code	Luminous Flux
929001391002	MAS LEDtube HF 1200mm HE 16.5W 830 T5	3000 K	830	2,300 lm
929001391102	MAS LEDtube HF 1200mm HE 16.5W 840 T5	4000 K	840	2,500 lm
929001391202	MAS LEDtube HF 1200mm HE 16.5W 865 T5	6500 K	865	2,500 lm
929001391302	MAS LEDtube HF 1500mm HE 20W 830 T5	3000 K	830	2,800 lm
929001391402	MAS LEDtube HF 1500mm HE 20W 840 T5	4000 K	840	3,000 lm
929001391502	MAS LEDtube HF 1500mm HE 20W 865 T5	6500 K	865	3,000 lm
929003795102	MAS LEDtube HF 600mm HE 7W 830 T5	3000 K	830	1,000 lm
929003795202	MAS LEDtube HF 600mm HE 7W 840 T5	4000 K	840	1,050 lm
929003795302	MAS LEDtube HF 600mm HE 7W 865 T5	6500 K	865	1,050 lm

Operating and Electrical

MASTER LED tube InstantFit HF T5

Order Code	Full Product Name	Line Frequency	Power
			Consumption
929001391002	MAS LEDtube HF 1200mm HE 16.5W 830 T5	30K to 100K Hz	16.5 W
929001391102	MAS LEDtube HF 1200mm HE 16.5W 840 T5	30K to 100K Hz	16.5 W
929001391202	MAS LEDtube HF 1200mm HE 16.5W 865 T5	30K to 100K Hz	16.5 W
929001391302	MAS LEDtube HF 1500mm HE 20W 830 T5	30K to 100K Hz	20 W
929001391402	MAS LEDtube HF 1500mm HE 20W 840 T5	30K to 100K Hz	20 W

Order Code	Full Product Name	Line Frequency	Power
			Consumption
929001391502	MAS LEDtube HF 1500mm HE 20W 865 T5	30K to 100K Hz	20 W
929003795102	MAS LEDtube HF 600mm HE 7W 830 T5	-	7 W
929003795202	MAS LEDtube HF 600mm HE 7W 840 T5	-	7 W
929003795302	MAS LEDtube HF 600mm HE 7W 865 T5	-	7 W

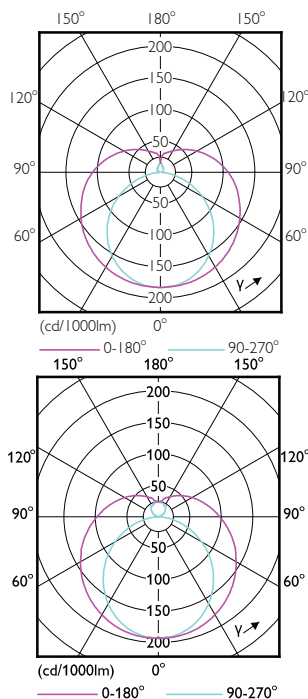
Temperature

Order Code	Full Product Name	T-Case Maximum (Nom)
929001391002	MAS LEDtube HF 1200mm HE 16.5W 830 T5	65 °C
929001391102	MAS LEDtube HF 1200mm HE 16.5W 840 T5	65 °C
929001391202	MAS LEDtube HF 1200mm HE 16.5W 865 T5	65 °C
929001391302	MAS LEDtube HF 1500mm HE 20W 830 T5	65 °C
929001391402	MAS LEDtube HF 1500mm HE 20W 840 T5	65 °C

Order Code	Full Product Name	T-Case Maximum (Nom)
929001391502	MAS LEDtube HF 1500mm HE 20W 865 T5	65 °C
929003795102	MAS LEDtube HF 600mm HE 7W 830 T5	50 °C
929003795202	MAS LEDtube HF 600mm HE 7W 840 T5	50 °C
929003795302	MAS LEDtube HF 600mm HE 7W 865 T5	50 °C

Approval and Application

Order Code	Full Product Name	Ambient temperature range	Energy
			Consumption kWh/1000 h
929001391002	MAS LEDtube HF 1200mm HE 16.5W 830 T5	-20 °C to 45 °C	17 kWh
929001391102	MAS LEDtube HF 1200mm HE 16.5W 840 T5	-20 °C to 45 °C	17 kWh
929001391202	MAS LEDtube HF 1200mm HE 16.5W 865 T5	-20 °C to 45 °C	17 kWh
929001391302	MAS LEDtube HF 1500mm HE 20W 830 T5	-20 °C to 45 °C	20 kWh
929001391402	MAS LEDtube HF 1500mm HE 20W 840 T5	-20 °C to 45 °C	20 kWh
929001391502	MAS LEDtube HF 1500mm HE 20W 865 T5	-20 °C to 45 °C	20 kWh
929003795102	MAS LEDtube HF 600mm HE 7W 830 T5	-20 to +45 °C	7 kWh
929003795202	MAS LEDtube HF 600mm HE 7W 840 T5	-20 to +45 °C	7 kWh
929003795302	MAS LEDtube HF 600mm HE 7W 865 T5	-20 to +45 °C	7 kWh



MASTER LED tube InstantFit HF T5

