



# For top performance and sustainability

## MASTER LED tube InstantFit HF T5

The Philips MASTER LEDtube integrates a LED light source into a traditional fluorescent form factor. Its unique design creates a perfectly uniform visual appearance, which cannot be distinguished from traditional fluorescent. These T5 lighting tubes are the right choice for absolute performance and are designed to stand up to everyday conditions. Unparalleled savings thanks to low energy consumption and an exceptionally long lifetime make these T5 LED tubes the choice for every demanding application.

### Benefits

- Absolute performance that provides a solution for every application
- Unparalleled savings with low energy consumption and long lifetime
- Robust and reliable: stands up to everyday conditions

### Features

- Retrofit existing T5 lamps with HF ballast
- Compatible with a wide range of ballasts
- > 50% energy savings compared to fluorescent tubes with up to 155lm/W
- Extra-long life up to 60,000 hours
- Ultra output up to 5600lm
- Enable implementation of HACCP, supported by product level NSF certificate
- No mercury

### Application

- Office
- Schools
- Retail

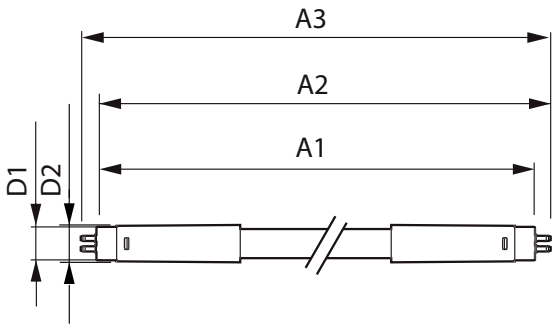
# MASTER LED tube InstantFit HF T5

## Versions



LEDtube MAS G5

## Dimensional drawing



Product	D1	D2	A1	A2	A3
MAS LEDtube HF 1200mm HE 16.5W 830 T5	15.5 mm	18.8 mm	1,149 mm	1,156.1 mm	1,163.2 mm
MAS LEDtube HF 1200mm HE 16.5W 840 T5	15.5 mm	18.8 mm	1,149 mm	1,156.1 mm	1,163.2 mm
MAS LEDtube HF 1200mm HE 16.5W 865 T5	15.5 mm	18.8 mm	1,149 mm	1,156.1 mm	1,163.2 mm
MAS LEDtube HF 1200mm HO 26W 830 T5 OE	15.5 mm	19 mm	1,149 mm	1,156 mm	1,163 mm
MAS LEDtube HF 1200mm HO 26W 840 T5 OE	15.5 mm	19 mm	1,149 mm	1,156 mm	1,163 mm
MAS LEDtube HF 1200mm HO 26W 865 T5 OE	15.5 mm	19 mm	1,149 mm	1,156 mm	1,163 mm
MAS LEDtube HF 1500mm HE 20W 830 T5	15.5 mm	18.8 mm	1,449 mm	1,456.1 mm	1,463.2 mm
MAS LEDtube HF 1500mm HE 20W 840 T5	15.5 mm	18.8 mm	1,449 mm	1,456.1 mm	1,463.2 mm
MAS LEDtube HF 1500mm HE 20W 865 T5	15.5 mm	18.8 mm	1,449 mm	1,456.1 mm	1,463.2 mm
MAS LEDtube HF 600mm HE 8W 830 T5	15.5 mm	18.8 mm	549 mm	556.1 mm	563.2 mm

MASTER LED tube InstantFit HF T5

General Information	
Cap-Base	G5
Switching Cycle	50,000
Nominal lifetime	60,000 hour(s)
Light Technical	
Beam Angle (Nom)	200 degree(s)
Color rendering index (CRI)	80
LLMF At End Of Nominal Lifetime (Nom)	70 %
Operating and Electrical	
Starting Time (Nom)	0.5 s
Controls and Dimming	
Dimmable	Yes - Check ballast compatibility
Mechanical and Housing	
Bulb Finish	Frosted
Bulb Shape	T5
Approval and Application	
Ambient temperature range	-20 °C to 45 °C

Light Technical

		Correlated Color Temperature (Nom)	Color Code	Luminous Flux
Order Code	Full Product Name			
929002352002	MAS LEDtube HF 1200mm HO 26W 830 T5 OE	3000 K	830	3,700 lm
929002352102	MAS LEDtube HF 1200mm HO 26W 840 T5 OE	4000 K	840	3,900 lm
929002352202	MAS LEDtube HF 1200mm HO 26W 865 T5 OE	6500 K	865	3,900 lm
929001390702	MAS LEDtube HF 600mm HE 8W 830 T5	3000 K	830	1,000 lm
929001391002	MAS LEDtube HF 1200mm HE 16.5W 830 T5	3000 K	830	2,300 lm
929001391102	MAS LEDtube HF 1200mm HE 16.5W 840 T5	4000 K	840	2,500 lm
929001391202	MAS LEDtube HF 1200mm HE 16.5W 865 T5	6500 K	865	2,500 lm
929001391302	MAS LEDtube HF 1500mm HE 20W 830 T5	3000 K	830	2,800 lm
929001391402	MAS LEDtube HF 1500mm HE 20W 840 T5	4000 K	840	3,000 lm
929001391502	MAS LEDtube HF 1500mm HE 20W 865 T5	6500 K	865	3,000 lm

Operating and Electrical

		Input		Power
Order Code	Full Product Name	Frequency	Line Frequency	Consumption
929002352002	MAS LEDtube HF 1200mm HO 26W 830 T5 OE	30K to 60K Hz	30K to 60K Hz	26 W
929002352102	MAS LEDtube HF 1200mm HO 26W 840 T5 OE	30K to 60K Hz	30K to 60K Hz	26 W
929002352202	MAS LEDtube HF 1200mm HO 26W 865 T5 OE	30K to 60K Hz	30K to 60K Hz	26 W
929001390702	MAS LEDtube HF 600mm HE 8W 830 T5	30K to 100K Hz	30K to 100K Hz	8 W
929001391002	MAS LEDtube HF 1200mm HE 16.5W 830 T5	30K to 100K Hz	30K to 100K Hz	16.5 W
929001391102	MAS LEDtube HF 1200mm HE 16.5W 840 T5	30K to 100K Hz	30K to 100K Hz	16.5 W
929001391202	MAS LEDtube HF 1200mm HE 16.5W 865 T5	30K to 100K Hz	30K to 100K Hz	16.5 W
929001391302	MAS LEDtube HF 1500mm HE 20W 830 T5	30K to 100K Hz	30K to 100K Hz	20 W
929001391402	MAS LEDtube HF 1500mm HE 20W 840 T5	30K to 100K Hz	30K to 100K Hz	20 W
929001391502	MAS LEDtube HF 1500mm HE 20W 865 T5	30K to 100K Hz	30K to 100K Hz	20 W

Temperature

		T-Case Maximum (Nom)
Order Code	Full Product Name	
929002352002	MAS LEDtube HF 1200mm HO 26W 830 T5 OE	50 °C
929002352102	MAS LEDtube HF 1200mm HO 26W 840 T5 OE	50 °C
929002352202	MAS LEDtube HF 1200mm HO 26W 865 T5 OE	50 °C
929001390702	MAS LEDtube HF 600mm HE 8W 830 T5	65 °C

MASTER LED tube InstantFit HF T5

Order Code	Full Product Name	T-Case Maximum (Nom)
929001391002	MAS LEDtube HF 1200mm HE 16.5W 830 T5	65 °C
929001391102	MAS LEDtube HF 1200mm HE 16.5W 840 T5	65 °C
929001391202	MAS LEDtube HF 1200mm HE 16.5W 865 T5	65 °C

Order Code	Full Product Name	T-Case Maximum (Nom)
929001391302	MAS LEDtube HF 1500mm HE 20W 830 T5	65 °C
929001391402	MAS LEDtube HF 1500mm HE 20W 840 T5	65 °C
929001391502	MAS LEDtube HF 1500mm HE 20W 865 T5	65 °C

Approval and Application

Order Code	Full Product Name	Energy Consumption kWh/1000 h
929002352002	MAS LEDtube HF 1200mm HO 26W 830 T5 OE	26 kWh
929002352102	MAS LEDtube HF 1200mm HO 26W 840 T5 OE	26 kWh
929002352202	MAS LEDtube HF 1200mm HO 26W 865 T5 OE	26 kWh
929001390702	MAS LEDtube HF 600mm HE 8W 830 T5	8 kWh
929001391002	MAS LEDtube HF 1200mm HE 16.5W 830 T5	17 kWh
929001391102	MAS LEDtube HF 1200mm HE 16.5W 840 T5	17 kWh
929001391202	MAS LEDtube HF 1200mm HE 16.5W 865 T5	17 kWh
929001391302	MAS LEDtube HF 1500mm HE 20W 830 T5	20 kWh
929001391402	MAS LEDtube HF 1500mm HE 20W 840 T5	20 kWh
929001391502	MAS LEDtube HF 1500mm HE 20W 865 T5	20 kWh

