



The new generation of Mains T5 LEDtube lighting

MASTER LEDtube Mains T5

The new Philips Master LEDtube Mains T5 brings simplicity to your lighting project. You don't need to pay attention to the driver technology anymore. Thanks to a unique design, Philips MASTER LEDtube Mains T5 installs in luminaires operating on mains power connection. So simple to operate! . Perfectly safe, reliable & easy to install Philips MASTER LEDtube Mains T5 is the ideal alternative to standard fluorescent tubes to maximize value over lifetime with high energy saving and lower maintenance costs.

Benefits

- Reduced operational cost thanks to lower energy consumption
- Lower maintenance cost thanks to longer lifetime than conventional lamps
- Fastest and easiest way to upgrade existing luminaires to LED technology; completely safe product and installation process

Features

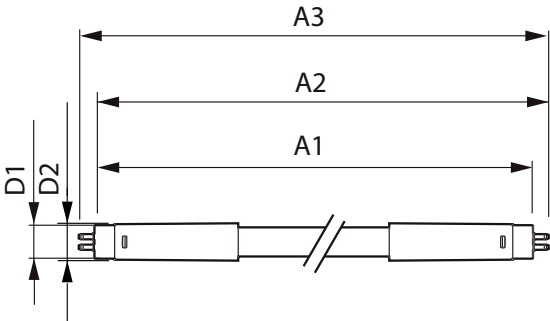
- Replacement of existing T5 lamps: operates with mains power connection
- Energy savings compared with fluorescent tubes
- Long lifetime
- Enable implementation of HACCP, supported by product level NSF certificate
- No mercury

Application

- Offices, shops, classrooms
- Industrial facilities and warehouses

MASTER LEDtube Mains T5

Dimensional drawing



| Product | D1 | D2 | A1 | A2 | A3 |
|------------------------------------|---------|---------|----------|------------|------------|
| MAS LEDtube 1200mm HE 16.5W 840 T5 | 15.8 mm | 19 mm | 1,149 mm | 1,156.1 mm | 1,163.2 mm |
| MAS LEDtube 1200mm HO 26W 830 T5 | 15.5 mm | 17.1 mm | 1,149 mm | 1,156 mm | 1,163 mm |
| MAS LEDtube 1200mm HO 26W 840 T5 | 15.5 mm | 17.1 mm | 1,149 mm | 1,156 mm | 1,163 mm |
| MAS LEDtube 1200mm HO 26W 865 T5 | 15.5 mm | 17.1 mm | 1,149 mm | 1,156 mm | 1,163 mm |
| MAS LEDtube 1500mm HO 26W 830 T5 | 15.5 mm | 17.1 mm | 1,449 mm | 1,456 mm | 1,463 mm |
| MAS LEDtube 1500mm HO 26W 840 T5 | 15.5 mm | 17.1 mm | 1,449 mm | 1,456 mm | 1,463 mm |
| MAS LEDtube 1500mm HO 26W 865 T5 | 15.5 mm | 17.1 mm | 1,449 mm | 1,456 mm | 1,463 mm |

| General Information | |
|---------------------------------------|----------------|
| Cap-Base | G5 |
| Switching Cycle | 200,000 |
| Nominal lifetime | 50,000 hour(s) |
| Light Technical | |
| Beam Angle (Nom) | 200 degree(s) |
| Color rendering index (CRI) | 80 |
| LLMF At End Of Nominal Lifetime (Nom) | 70 % |
| Operating and Electrical | |
| Input Frequency | 50 to 60 Hz |
| Line Frequency | 50 to 60 Hz |
| Starting Time (Nom) | 0.5 s |
| Controls and Dimming | |
| Dimmable | No |
| Mechanical and Housing | |
| Bulb Finish | Frosted |
| Bulb Shape | T5 |

Light Technical

| Order Code | Full Product Name | Correlated Color Temperature (Nom) | Color Code | Luminous Flux |
|--------------|------------------------------------|------------------------------------|------------|---------------|
| 929001908502 | MAS LEDtube 1200mm HO 26W 830 T5 | 3000 K | 830 | 3,600 lm |
| 929001908602 | MAS LEDtube 1200mm HO 26W 840 T5 | 4000 K | 840 | 3,900 lm |
| 929001908702 | MAS LEDtube 1200mm HO 26W 865 T5 | 6500 K | 865 | 3,900 lm |
| 929001908802 | MAS LEDtube 1500mm HO 26W 830 T5 | 3000 K | 830 | 3,600 lm |
| 929001908902 | MAS LEDtube 1500mm HO 26W 840 T5 | 4000 K | 840 | 3,900 lm |
| 929001909002 | MAS LEDtube 1500mm HO 26W 865 T5 | 6500 K | 865 | 3,900 lm |
| 929002421008 | MAS LEDtube 1200mm HE 16.5W 840 T5 | 4000 K | 840 | 2,500 lm |

Operating and Electrical

| Order Code | Full Product Name | Power Consumption |
|--------------|----------------------------------|-------------------|
| 929001908502 | MAS LEDtube 1200mm HO 26W 830 T5 | 26 W |
| 929001908602 | MAS LEDtube 1200mm HO 26W 840 T5 | 26 W |
| 929001908702 | MAS LEDtube 1200mm HO 26W 865 T5 | 26 W |
| 929001908802 | MAS LEDtube 1500mm HO 26W 830 T5 | 26 W |

| Order Code | Full Product Name | Power Consumption |
|--------------|------------------------------------|-------------------|
| 929001908902 | MAS LEDtube 1500mm HO 26W 840 T5 | 26 W |
| 929001909002 | MAS LEDtube 1500mm HO 26W 865 T5 | 26 W |
| 929002421008 | MAS LEDtube 1200mm HE 16.5W 840 T5 | 16.5 W |

Temperature

MASTER LEDtube Mains T5

| Order Code | Full Product Name | T-Case Maximum (Nom) |
|--------------|----------------------------------|----------------------|
| 929001908502 | MAS LEDtube 1200mm HO 26W 830 T5 | 65 °C |
| 929001908602 | MAS LEDtube 1200mm HO 26W 840 T5 | 65 °C |
| 929001908702 | MAS LEDtube 1200mm HO 26W 865 T5 | 65 °C |
| 929001908802 | MAS LEDtube 1500mm HO 26W 830 T5 | 65 °C |

| Order Code | Full Product Name | T-Case Maximum (Nom) |
|--------------|------------------------------------|----------------------|
| 929001908902 | MAS LEDtube 1500mm HO 26W 840 T5 | 65 °C |
| 929001909002 | MAS LEDtube 1500mm HO 26W 865 T5 | 65 °C |
| 929002421008 | MAS LEDtube 1200mm HE 16.5W 840 T5 | 70 °C |

Approval and Application

| Order Code | Full Product Name | Ambient temperature range | Energy |
|--------------|------------------------------------|---------------------------|------------------------|
| | | | Consumption kWh/1000 h |
| 929001908502 | MAS LEDtube 1200mm HO 26W 830 T5 | -20 to +45 °C | 26 kWh |
| 929001908602 | MAS LEDtube 1200mm HO 26W 840 T5 | -20 to +45 °C | 26 kWh |
| 929001908702 | MAS LEDtube 1200mm HO 26W 865 T5 | -20 to +45 °C | 26 kWh |
| 929001908802 | MAS LEDtube 1500mm HO 26W 830 T5 | -20 to +45 °C | 26 kWh |
| 929001908902 | MAS LEDtube 1500mm HO 26W 840 T5 | -20 to +45 °C | 26 kWh |
| 929001909002 | MAS LEDtube 1500mm HO 26W 865 T5 | -20 to +45 °C | 26 kWh |
| 929002421008 | MAS LEDtube 1200mm HE 16.5W 840 T5 | -20 °C to 45 °C | 17 kWh |

