



The new generation of energy-saving LED PLS tube lighting

CorePro LED PLS

The Philips CorePro LED PLS integrates a LED light source into a traditional fluorescent form factor. This product is the ideal solution for uplamping in general lighting applications: it meets basic lighting requirements, offers significant energy savings, and is environment-friendly.

Benefits

- Reduced operational cost thanks to lower energy consumption
- Lower maintenance cost thanks to a 2-3 times longer lifetime than conventional lamps
- The fastest and easiest way to upgrade existing luminaires to LED technology; completely safe product and installation process

Features

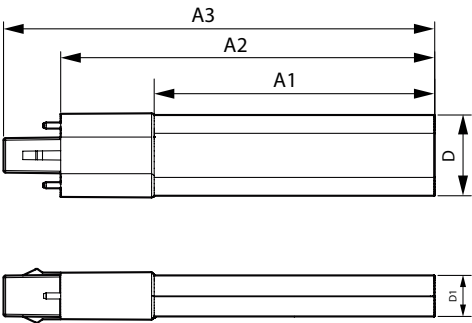
- Highly energy-efficient
- Easy installation
- Conventional form factor to fit into existing luminaires
- No mercury

Application

- Hospitality, retail, office, industrial and home applications

CorePro LED PLS

Dimensional drawing



| Product | D1 | D | A1 | A2 | A3 |
|-------------------------------|-------|-------|--------|--------|--------|
| CorePro LED PLS 5W 830 2P G23 | 16 mm | 31 mm | 108 mm | 144 mm | 166 mm |
| CorePro LED PLS 5W 840 2P G23 | 16 mm | 31 mm | 108 mm | 144 mm | 166 mm |

| General Information | |
|---------------------------------------|----------------|
| Cap-Base | G23 |
| Switching Cycle | 50,000 |
| Nominal lifetime | 30,000 hour(s) |
| Light Technical | |
| Beam Angle (Nom) | 120 degree(s) |
| Color rendering index (CRI) | 82 |
| LLMF At End Of Nominal Lifetime (Nom) | 70 % |
| Operating and Electrical | |
| Input Frequency | 50 to 60 Hz |
| Power Consumption | 5 W |
| Starting Time (Nom) | 0.5 s |
| Temperature | |
| T-Case Maximum (Nom) | 50 °C |
| Controls and Dimming | |
| Dimmable | No |
| Mechanical and Housing | |
| Bulb Finish | Frosted |
| Bulb Shape | PL-S |
| Approval and Application | |
| Ambient temperature range | -20 to +45 °C |
| Energy Consumption kWh/1000 h | 5 kWh |

Light Technical

| | | Correlated Color Temperature | | |
|--------------|-------------------------------|------------------------------|------------|---------------|
| Order Code | Full Product Name | (Nom) | Color Code | Luminous Flux |
| 929003756802 | CorePro LED PLS 5W 830 2P G23 | 3000 K | 830 | 520 lm |
| 929003756902 | CorePro LED PLS 5W 840 2P G23 | 4000 K | 840 | 550 lm |

CorePro LED PLS

