



The professional LEDtube T5 rewiring solution

CorePro LEDtube Mains T5

The professional LEDtube MainsFit is a better LED solution suitable for replacing T5 fluorescent lamps. The product provides a natural lighting effect for use in general lighting applications, as well as instant energy savings – an environmentally friendly solution.

Benefits

- Low total cost of ownership
- Easy upgrade to LED lighting technology
- Great solution to replace all existing fluorescent T5 lamps without consideration of ballast compatibility

Features

- DLC certified
- Reliable performance throughout 50,000hrs
- Easy double-end rewiring installation to replace existing T5 lamps
- T5 form factor to fit into most of the existing luminaires
- No mercury

Application

- Office
- Retail stores
- Industrial workshop
- Warehouses

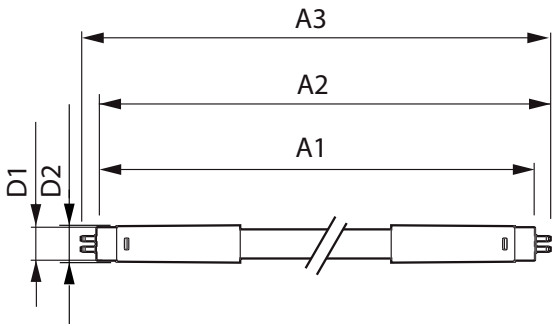
CorePro LEDtube Mains T5

Versions



ESSENTIAL LEDtube 8-16W G5
830-865 APR

Dimensional drawing



Product	D1	D2	A1	A2	A3
CorePro LEDtube 1200mm 16W865 G5 I APR	15.8 mm	19 mm	1,149 mm	1,156.1 mm	1,163.2 mm

