



Philips most advanced LED replacements for compact fluorescent 2-pin PL-S lamp

PL-S

Philips LED PL-S lamps make the transition to LED from CFL lamps as simple as replacing a lamp. The InstantFit (UL Type A) single-CCT and MainsFit (UL Type B) multi-CCT, 2-pin PL-S LED lamps are available for the selection. They offer a quickly and effectively replacement for 9W or 13W compact fluorescent PL-S lamps.

Benefits

- Minimizes overall lighting costs
- Offers cheapest and easiest upgrade to LED lighting technology
- Excellent compatibility with existing fluorescent ballasts

Features

- High energy efficiency, over 40% energy savings
- Long lifetime
- Easy plug-and-play installation. Retrofit replacement of existing CFL-ni lamps
- Conventional form factor fits into existing luminaires
- Durable polycarbonate construction

Application

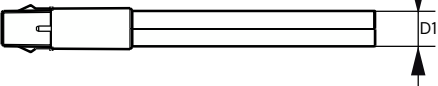
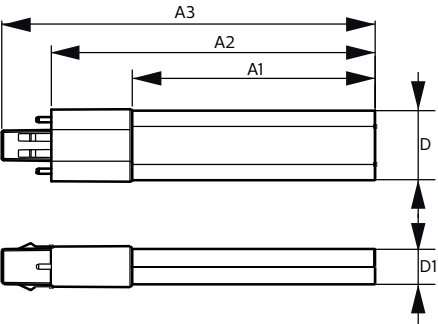
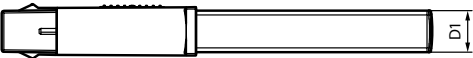
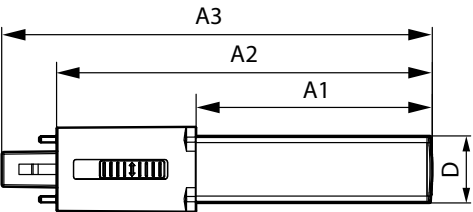
- Residential and multi-family complexes
- Retail and hospitality

Versions



PL S COR 5CCT P 2P 1 20241226

Dimensional drawing



Product	D1	D	A1	A2	A3
5PL-S/COR/9H-5CCT/MF5/P/2P 20/1	16 mm	26 mm	91 mm	145 mm	166 mm
6PL-S/COR/13H-5CCT/MF6/P/2P 20/1	16 mm	26 mm	106 mm	160 mm	181 mm

Product	D1	D2	A1	A2	A3
5PL-S/LED/13H/827/IF5/P/2P 20/1	31.1 mm	15.8 mm	108 mm	144 mm	166 mm
5PL-S/LED/13H/835/IF5/P/2P 20/1	31.1 mm	15.8 mm	108 mm	144 mm	166 mm
5PL-S/LED/13H/840/IF5/P/2P 20/1	31.1 mm	15.8 mm	108 mm	144 mm	166 mm

General Information	
Switching Cycle	50,000
Nominal lifetime	50,000 hour(s)
Light Technical	
Color rendering index (CRI)	82
LLMF At End Of Nominal Lifetime (Nom)	70 %
Operating and Electrical	
Input Frequency	50 to 60 Hz
Starting Time (Nom)	0.5 s
Controls and Dimming	
Dimmable	No
Mechanical and Housing	
Bulb Finish	Frosted
Bulb Shape	PL-S

General Information

Order Code	Full Product Name	Cap-Base
929004582904	5PL-S/COR/9H-5CCT/MF5/P/2P 20/1	G23
929004583004	6PL-S/COR/13H-5CCT/MF6/P/2P 20/1	GX23
929001862804	5PL-S/LED/13H/827/IF5/P/2P 20/1	GX23
929001863004	5PL-S/LED/13H/835/IF5/P/2P 20/1	GX23
929001863104	5PL-S/LED/13H/840/IF5/P/2P 20/1	GX23

Light Technical

Order Code	Correlated					Correlated					Luminous Flux
	Full Product Name	Beam Angle (Nom)	Color Temperature (Nom)	Color Code	Lumii	Full Product Name	Beam Angle (Nom)	Color Temperature (Nom)	Color Code		
					Order Code						
929004582904	5PL-	140	2700 K	2700/3000/3500/4000/5000	475 lm		/P/2P				
	S/COR/	degree(s)					20/1				
	9H-5CCT/				929001863004	5PL-	120	3500 K	835		560 lm
	MF5/P/2P					S/LED/13	degree(s)				
929004583004	20/1						H/835/IF5				
	6PL-	140	2700 K	2700/3000/3500/4000/5000	620 lm		/P/2P				
	S/COR/	degree(s)					20/1				
	13H-5CCT/				929001863104	5PL-	120	4000 K	840		580 lm
929001862804	MF6/P/2P						S/LED/13	degree(s)			
	20/1						H/840/IF5				
	5PL-	120	2700 K	827	520 lm		/P/2P				
	S/LED/13	degree(s)					20/1				
	H/827/IF5										

Operating and Electrical

Order Code	Full Product Name	Line Frequency	Power Consumption	Wattage Equivalent
929004582904	5PL-S/COR/9H-5CCT/MF5/P/2P 20/1	-	4.5 W	9 W
929004583004	6PL-S/COR/13H-5CCT/MF6/P/2P 20/1	-	6 W	13 W
929001862804	5PL-S/LED/13H/827/IF5/P/2P 20/1	50 to 60 Hz	5 W	13 W

Order Code	Full Product Name	Line Frequency	Power Consumption	Wattage Equivalent
929001863004	5PL-S/LED/13H/835/IF5/P/2P 20/1	50 to 60 Hz	5 W	13 W
929001863104	5PL-S/LED/13H/840/IF5/P/2P 20/1	50 to 60 Hz	5 W	13 W

Temperature

Order Code	Full Product Name	T-Case Maximum (Nom)
929004582904	5PL-S/COR/9H-5CCT/MF5/P/2P 20/1	55 °C
929004583004	6PL-S/COR/13H-5CCT/MF6/P/2P 20/1	55 °C
929001862804	5PL-S/LED/13H/827/IF5/P/2P 20/1	75 °C

Order Code	Full Product Name	T-Case Maximum (Nom)
929001863004	5PL-S/LED/13H/835/IF5/P/2P 20/1	75 °C
929001863104	5PL-S/LED/13H/840/IF5/P/2P 20/1	75 °C

Approval and Application

Order Code	Full Product Name	Ambient temperature range
929004582904	5PL-S/COR/9H-5CCT/MF5/P/2P 20/1	-20 to +45 °C
929004583004	6PL-S/COR/13H-5CCT/MF6/P/2P 20/1	-20 to +45 °C
929001862804	5PL-S/LED/13H/827/IF5/P/2P 20/1	-20 °C to 45 °C
929001863004	5PL-S/LED/13H/835/IF5/P/2P 20/1	-20 °C to 45 °C
929001863104	5PL-S/LED/13H/840/IF5/P/2P 20/1	-20 °C to 45 °C

