



# Superior Light quality comes at lower energy and maintenance cost

## Durabay Prime Highbay

With the successful introduction of the Durabay Family, Philips achieved a breakthrough in high-bay lighting, providing the superior light quality, long service lifetime, reduced energy consumption and less maintenance in the switch on-off (PSU) and Dali dimmable (PSD) versions. Now, with Durabay Prime, Philips continues to improve even further: an improved total cost of ownership, seamlessly integrates state-of-the-art LED lighting with higher efficacy and excellent thermal stability. Durabay Prime delivers a uniform light distribution with a Wide beam and Narrow beam optics that provides outstanding illuminances in industrial and retail environments. It is designed to replace HPI BU 250W/400W, offering up to 70% of energy savings, whilst delivering long lifetime, in often hard to reach maintenance areas.

### Benefits

- Suitable for use in harsh Industrial environment
- Option of multiple optics and lumen packages providing application flexibility
- Best in class efficacy and Quality lighting leads to lowering total cost of opportunity
- High quality material and design leads to longer life class for luminaire

# Durabay Prime Highbay

## Features

- Ingress Protection -IP66
- Impact Resistance IK08
- Inbuilt encapsulated Potted Driver
- Designed for operations under diverse environment from -10°C to 45°C
- Life class is 50000 hours (L70B50 @ Ta45°C)
- Unique Fin design for excellent thermal stability
- Toughened and shatter-proof quality of glass and built-in lens plate enhances safety
- Pressure die-cast housing offers excellent corrosion-resistance and robustness
- System efficiency >130 lm/W
- Two Beam Angles Narrow beam (NB60°) & Wide Beam (WB110°)
- High Voltage Cutoff @ 325 ± 15V with Auto Restart feature
- 440V Protection for 8 Hrs. (Phase to Phase)
- Internal Surge Protection 4KV

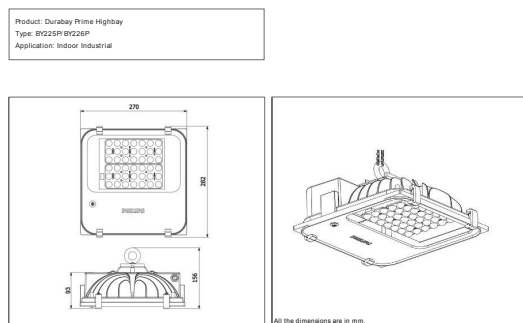
## Application

- Manufacturing
- Arena and Sports
- Warehouses
- Airports
- Small Manufacturing facilities

## Warnings and Safety

- Meant for use in Indoor Industrial environment only

## Dimensional drawing



## Product details

BY225P\_BY226P



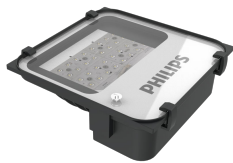
BY225P\_BY226P



# Durabay Prime Highbay

## Product details

BY225P\_BY226P



General Information	
Driver included	Yes
Light Technical	
Correlated Color Temperature (Nom)	6500 K
Color rendering index (CRI)	>80
Operating and Electrical	
Protection class IEC	Safety class I
Input Voltage	140–270 V
Controls and Dimming	
Dimmable	No
Mechanical and Housing	
Optical cover type	Tempered glass
Housing Color	Gray
Mech. impact protection code	IK08
Ingress protection code	IP66
Approval and Application	
Ambient temperature range	0 to +45 °C
Flammability mark	For mounting on normally flammable surfaces
Initial Performance (IEC Compliant)	
Initial chromaticity	<5

## Light Technical

Order Code	Full Product Name	Beam angle of light source	Luminous Efficacy		Optic type
			(rated) (Nom)	Luminous Flux	
919515812901	BY225P LED100S CW NB PSU FG GR V1	60 degree(s)	131.25 lm/W	10,500 lm	Beam angle 60°
919515812902	BY225P LED100S CW WB PSU FG GR V1	110 degree(s)	131.25 lm/W	10,500 lm	Beam angle 110°
919515813031	BY225P LED135S CW NB PSU FG GR V1	60 degree(s)	133.33 lm/W	14,000 lm	Beam angle 60°
919515813032	BY225P LED135S CW WB PSU FG GR V1	110 degree(s)	133.33 lm/W	14,000 lm	Beam angle 110°

## Operating and Electrical

Order Code	Full Product Name	Power Consumption
919515812901	BY225P LED100S CW NB PSU FG GR V1	80 W
919515812902	BY225P LED100S CW WB PSU FG GR V1	80 W

Order Code	Full Product Name	Power Consumption
919515813031	BY225P LED135S CW NB PSU FG GR V1	105 W
919515813032	BY225P LED135S CW WB PSU FG GR V1	105 W

## Durabay Prime Highbay

