



Philips Ledinaire Square Wall-mounted: for your everyday lighting jobs.

Ledinaire Square Wall-mounted

Public spaces and circulation areas demand the most reliable lighting solutions – especially parking garages, offices, entrances, hallways, corridors, and staircases. With Philips Ledinaire, you get superb reliability and more. This popular range features a selection of essential LED luminaires that you can choose off the shelf. Like our modern, Ledinaire square wall-mounted WL055V model that's suitable for a wide range of general lighting applications. And just like the rest of the Ledinaire range, it's designed with Philips high quality standards at a very competitive price. An affordable, reliable, and energy-efficient choice for wall mounting, from the leading name in LED.

Benefits

- Philips quality and reliability
- Energy saving LED
- Water and vandal-proof
- Wide range of applications
- Rectangular 1:1 replacement for TCH329 luminaire

Features

- Modern, simplistic design
- High efficiency with 100lm/W
- High protection (IP65 and IK08)
- Optional emergency version with 3 hour's battery
- Optional motion detection and daylight sensor (MDU)
- Optional step dimming by dipswitch at 10% and 20%

Ledinaire Square Wall-mounted

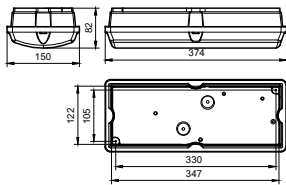
Application

- Parking Garages
- Entrances
- Corridors
- Staircases

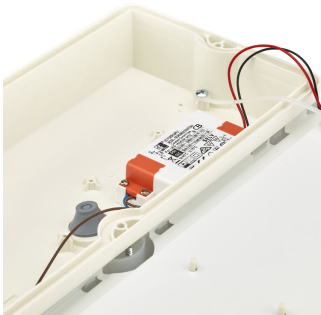
Warnings and Safety

- For MDU (Motion Detection Unit) versions:
- Sensor coverage may vary between indoor and outdoor applications.
- Strong wind and rain may trigger the sensor if there are no surroundings such as walls, roof etc.
- Any vibration or movement may trigger the sensor. Ensure the sensor is far from any such continuous signal.

Dimensional drawing



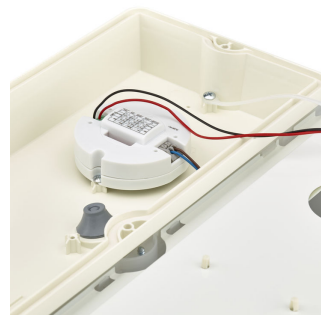
Product details



Ledinaire Square Wall-mounted
standard version (PSU)



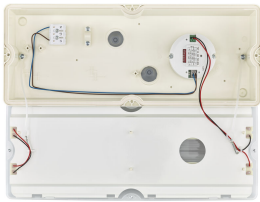
Ledinaire Square Wall-mounted
standard version (PSU)



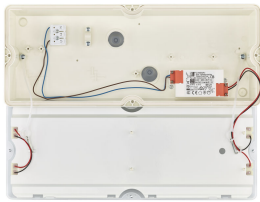
Ledinaire Square Wall-mounted
with Movement Detection Unit
(MDU)

Ledinaire Square Wall-mounted

Product details



Ledinaire Square Wall-mounted
with Movement Detection Unit
(MDU)



Ledinaire Square Wall-mounted
standard version (PSU)



Ledinaire Square Wall-mounted
with Movement Detection Unit
(MDU)

Ledinaire Square Wall-mounted

General Information	
Driver included	Yes
Light source replaceable	No
Number of gear units	1 unit
Light Technical	
Beam angle of light source	110 degree(s)
Color rendering index (CRI)	>80
Operating and Electrical	
Protection class IEC	Safety class II
Input Voltage	220 to 240 V
Line Frequency	50 or 60 Hz
Suitable for random switching	Not applicable
Mechanical and Housing	
Housing Color	White
Mech. impact protection code	IK08
Ingress protection code	IP65
Approval and Application	
CE mark	Yes
ENEC mark	-
Flammability mark	-
Glow-wire test	Temperature 850 °C, duration 30 s
Stroboscopic effect visibility measure (SVM)	1.6
Initial Performance (IEC Compliant)	
Initial chromaticity	SDCM≤5
Luminous flux tolerance	+/-10%

General Information

Order Code	Full Product Name	Service tag
910505100601	WL055V LED6S/840 PSU EL3 WH	No
910505100602	WL055V LED6S/830 PSU EL3 WH	No
911401834880	WL055V LED6S/830 PSU WH	-
911401834980	WL055V LED6S/840 PSU WH	-
911401850580	WL055V LED6S/840 PSR MDU WH	-
911401862580	WL055V LED6S/830 PSR MDU WH	-

Light Technical

Order Code	Full Product Name	Correlated Color Temperature (Nom)	Luminous Efficacy (rated) (Nom)	Luminous Flux	Optic type
910505100601	WL055V LED6S/840 PSU EL3 WH	4000 K	79 lm/W	630 lm	Wide beam
910505100602	WL055V LED6S/830 PSU EL3 WH	3000 K	75 lm/W	600 lm	Wide beam
911401834880	WL055V LED6S/830 PSU WH	3000 K	100 lm/W	600 lm	Beam angle 110°

Order Code	Full Product Name	Correlated Color Temperature (Nom)	Luminous Efficacy (rated) (Nom)	Luminous Flux	Optic type
911401834980	WL055V LED6S/840 PSU WH	4000 K	105 lm/W	630 lm	Beam angle 110°
911401850580	WL055V LED6S/840 PSR MDU WH	4000 K	105 lm/W	630 lm	Beam angle 110°
911401862580	WL055V LED6S/830 PSR MDU WH	3000 K	100 lm/W	600 lm	Beam angle 110°

Operating and Electrical

Ledinaire Square Wall-mounted

Order Code	Full Product Name	Power Consumption
910505100601	WL055V LED6S/840 PSU EL3 WH	8 W
910505100602	WL055V LED6S/830 PSU EL3 WH	8 W
911401834880	WL055V LED6S/830 PSU WH	6 W

Order Code	Full Product Name	Power Consumption
911401834980	WL055V LED6S/840 PSU WH	6 W
911401850580	WL055V LED6S/840 PSR MDU WH	6 W
911401862580	WL055V LED6S/830 PSR MDU WH	6 W

Controls and Dimming

Order Code	Full Product Name	Dimmable	Embedded control	Maximum dim level
910505100601	WL055V LED6S/840 PSU EL3 WH	No	-	-
910505100602	WL055V LED6S/830 PSU EL3 WH	No	-	-
911401834880	WL055V LED6S/830 PSU WH	No	-	-
911401834980	WL055V LED6S/840 PSU WH	No	-	-

Order Code	Full Product Name	Dimmable	Embedded control	Maximum dim level
911401850580	WL055V LED6S/840 PSR MDU WH	Yes	Programmable movement and light sensor	20%
911401862580	WL055V LED6S/830 PSR MDU WH	Yes	Programmable movement and light sensor	20%

Emergency Operation (1/2)

Order Code	Full Product Name	Central Emergency	Emergency lighting	Emergency flux	Type of emergency lighting battery
910505100601	WL055V LED6S/840 PSU EL3 WH	No	Emergency lighting 3 hours duration basic version	370 lm	Lithium
910505100602	WL055V LED6S/830 PSU EL3 WH	No	Emergency lighting 3 hours duration basic version	370 lm	Lithium
911401834880	WL055V LED6S/830 PSU WH	-	-	-	-

Order Code	Full Product Name	Central Emergency	Emergency lighting	Emergency flux	Type of emergency lighting battery
911401834980	WL055V LED6S/840 PSU WH	-	-	-	-
911401850580	WL055V LED6S/840 PSR MDU WH	-	-	-	-
911401862580	WL055V LED6S/830 PSR MDU WH	-	-	-	-

Emergency Operation (2/2)

Order Code	Full Product Name	Rated duration of the emergency lighting (when fully charged)
910505100601	WL055V LED6S/840 PSU EL3 WH	3 hour(s)
910505100602	WL055V LED6S/830 PSU EL3 WH	3 hour(s)
911401834880	WL055V LED6S/830 PSU WH	-

Order Code	Full Product Name	Rated duration of the emergency lighting (when fully charged)
911401834980	WL055V LED6S/840 PSU WH	-
911401850580	WL055V LED6S/840 PSR MDU WH	-
911401862580	WL055V LED6S/830 PSR MDU WH	-

Approval and Application

Ledinaire Square Wall-mounted

Order Code	Full Product Name	Ambient temperature range	Flickering value (PstLM) - Flickering value as per EN 61000-3-3
910505100601	WL055V LED6S/840 PSU EL3 WH	0 to +25 °C	-
910505100602	WL055V LED6S/830 PSU EL3 WH	0 to +25 °C	-
911401834880	WL055V LED6S/830 PSU WH	-20 to +35 °C	1

Order Code	Full Product Name	Ambient temperature range	Flickering value (PstLM) - Flickering value as per EN 61000-3-3
911401834980	WL055V LED6S/840 PSU WH	-20 to +35 °C	1
911401850580	WL055V LED6S/840 PSR MDU WH	-20 to +35 °C	1
911401862580	WL055V LED6S/830 PSR MDU WH	-20 to +35 °C	1

Product Data

Order Code	Full Product Name	Product family code
910505100601	WL055V LED6S/840 PSU EL3 WH	WL055V
910505100602	WL055V LED6S/830 PSU EL3 WH	WL055V
911401834880	WL055V LED6S/830 PSU WH	-

Order Code	Full Product Name	Product family code
911401834980	WL055V LED6S/840 PSU WH	-
911401850580	WL055V LED6S/840 PSR MDU WH	-
911401862580	WL055V LED6S/830 PSR MDU WH	-

