

# Solar Panels for Philips Solar Lighting.

## Solar Panel Sub System

A Range of Solar panels from 20 W to 325 W specially designed for Philips Solar Street lighting, Flood lighting and Solar Indoor Systems

### Benefits

- Robust quality managed by Philips quality discipline, supplied by world class manufacturers
- Customization available
- Plug and play design for easy connection and installation
- TUV certification

### Features

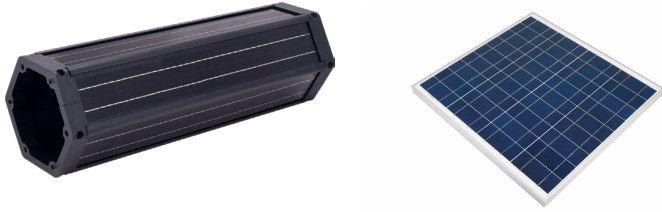
- Connectors with excellent aging resistance and UV endurance, for harsh environment operations.
- Environmentally sealed to IP67
- Ambient temperature range : -40~+85。 C
- Simple crimp-and-poke application
- Tactile and audible mating feedback

### Application

- Solar Street Lighting
- Solar Flood Lighting
- Solar Indoor Systems

# Solar Panel Sub System

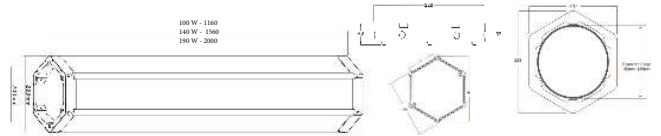
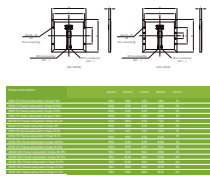
## Versions



Cylindrical Vertical Solar Panel

90W 18V Panel subsystem

## Dimensional drawing



### Operating and Electrical

Cable connection kit Included

### Temperature

Ambient temperature range -40 to +85 °C

## Operating and Electrical

| Order Code   | Full Product Name                    | Panel peak wattage | Panel type       | Panel voltage |
|--------------|--------------------------------------|--------------------|------------------|---------------|
| 911401803102 | 60W 17V Panel subsystem Vmpp 17.9V   | 60 W               | Poly crystalline | 17 V          |
| 911401803302 | 75W 17V Panel subsystem Vmpp 17.89V  | 75 W               | Poly crystalline | 17 V          |
| 911401803502 | 125W 17V Panel subsystem Vmpp 18.7V  | 125 W              | Poly crystalline | 17 V          |
| 911401803702 | 100W 17V Panel subsystem Vmpp 18.22V | 100 W              | Poly crystalline | 17 V          |
| 911401803802 | 105W 17V Panel subsystem Vmpp 18V    | 105 W              | Poly crystalline | 17 V          |
| 911401803902 | 155W 17V Panel subsystem Vmpp 18.93V | 155 W              | Poly crystalline | 17 V          |
| 911401804002 | 130W 19V Panel subsystem Vmpp 20.16V | 130 W              | Poly crystalline | 19 V          |

| Order Code   | Full Product Name                       | Panel peak wattage | Panel type       | Panel voltage |
|--------------|---|--------------------|------------------|---------------|
| 911401804402 | 315W 36V Panel subsystem Vmpp 37.37V    | 315 W              | Poly crystalline | 36 V          |
| 911401804502 | 310W 36V Panel subsystem Vmpp 37.13V    | 310 W              | Poly crystalline | 36 V          |
| 911401821902 | 140Wp Vertical Panel Subsystem Vmpp 18V | 140 W              | Mono crystalline | 18 V          |
| 911401822002 | 140Wp Vertical Panel Subsystem Vmpp 36V | 140 W              | Mono crystalline | 36 V          |
| 911401822102 | 200Wp Vertical Panel Subsystem Vmpp 18V | 190 W              | Mono crystalline | 18 V          |
| 911401822202 | 200Wp Vertical Panel Subsystem Vmpp 36V | 190 W              | Mono crystalline | 36 V          |

## Solar Panel Sub System

| Order Code   | Full Product Name                    | Panel peak wattage | Panel type       | Panel voltage |
|--------------|--------------------------------------|--------------------|------------------|---------------|
| 911401893501 | 200W 36V Panel subsystem Vmpp 38.99V | 200 W              | Poly crystalline | 36 V          |

### Mechanical and Housing

| Order Code   | Full Product Name                    | Overall height | Overall length | Overall width |
|--------------|--------------------------------------|----------------|----------------|---------------|
| 911401803102 | 60W 17V Panel subsystem Vmpp 17.9V   | 35 mm          | 639 mm         | 666 mm        |
| 911401803302 | 75W 17V Panel subsystem Vmpp 17.89V  | 35 mm          | 774 mm         | 666 mm        |
| 911401803502 | 125W 17V Panel subsystem Vmpp 18.7V  | 35 mm          | 1,195 mm       | 666 mm        |
| 911401803702 | 100W 17V Panel subsystem Vmpp 18.22V | 35 mm          | 990 mm         | 666 mm        |
| 911401803802 | 105W 17V Panel subsystem Vmpp 18V    | 35 mm          | 990 mm         | 666 mm        |
| 911401803902 | 155W 17V Panel subsystem Vmpp 18.93V | 35 mm          | 1,476 mm       | 666 mm        |
| 911401804002 | 130W 19V Panel subsystem Vmpp 20.16V | 35 mm          | 1,244 mm       | 666 mm        |

| Order Code   | Full Product Name                       | Overall height | Overall length | Overall width |
|--------------|---|----------------|----------------|---------------|
| 911401804402 | 315W 36V Panel subsystem Vmpp 37.37V    | 40 mm          | 1,956 mm       | 992 mm        |
| 911401804502 | 310W 36V Panel subsystem Vmpp 37.13V    | 40 mm          | 1,956 mm       | 992 mm        |
| 911401821902 | 140Wp Vertical Panel Subsystem Vmpp 18V | 1,560 mm       | 228 mm         | 220 mm        |
| 911401822002 | 140Wp Vertical Panel Subsystem Vmpp 36V | 1,560 mm       | 228 mm         | 220 mm        |
| 911401822102 | 200Wp Vertical Panel Subsystem Vmpp 18V | 2,000 mm       | 228 mm         | 220 mm        |
| 911401822202 | 200Wp Vertical Panel Subsystem Vmpp 36V | 2,000 mm       | 228 mm         | 220 mm        |
| 911401893501 | 200W 36V Panel subsystem Vmpp 38.99V    | 40 mm          | 1,318 mm       | 992 mm        |

### Approval and Application

| Order Code   | Full Product Name                    | Ingress protection code |
|--------------|--------------------------------------|-------------------------|
| 911401803102 | 60W 17V Panel subsystem Vmpp 17.9V   | IP67                    |
| 911401803302 | 75W 17V Panel subsystem Vmpp 17.89V  | IP67                    |
| 911401803502 | 125W 17V Panel subsystem Vmpp 18.7V  | IP67                    |
| 911401803702 | 100W 17V Panel subsystem Vmpp 18.22V | IP67                    |
| 911401803802 | 105W 17V Panel subsystem Vmpp 18V    | IP67                    |
| 911401803902 | 155W 17V Panel subsystem Vmpp 18.93V | IP67                    |
| 911401804002 | 130W 19V Panel subsystem Vmpp 20.16V | IP67                    |

| Order Code   | Full Product Name                       | Ingress protection code |
|--------------|---|-------------------------|
| 911401804402 | 315W 36V Panel subsystem Vmpp 37.37V    | IP67                    |
| 911401804502 | 310W 36V Panel subsystem Vmpp 37.13V    | IP67                    |
| 911401821902 | 140Wp Vertical Panel Subsystem Vmpp 18V | IP65                    |
| 911401822002 | 140Wp Vertical Panel Subsystem Vmpp 36V | IP65                    |
| 911401822102 | 200Wp Vertical Panel Subsystem Vmpp 18V | IP65                    |
| 911401822202 | 200Wp Vertical Panel Subsystem Vmpp 36V | IP65                    |
| 911401893501 | 200W 36V Panel subsystem Vmpp 38.99V    | IP67                    |

