



For an easy step into smart lighting

LEDtube Connected EM/mains T8

Philips LEDtube Connected - smart retrofit LED T8 lamps that give you an easy and seamless way to upgrade to connected lighting. These Interact Ready LED tubes can be programmed to maximize energy savings, while providing wireless and automated light for your comfort and convenience. What's more, it is fully scalable and upgradable. If you want to enjoy additional benefits such as remote control or a management dashboard, you can simply keep the lamps you currently have installed and add a gateway to experience all the advantages of a cloud-based system. There's no better way to take lighting solutions to the next level.

Benefits

- Smart sustainability thanks to advanced lighting control
- Easy connectivity with a whole new level of convenient installation
- Added comfort through personalization
- A future-proof solutions that is scalable and upgradable

Features

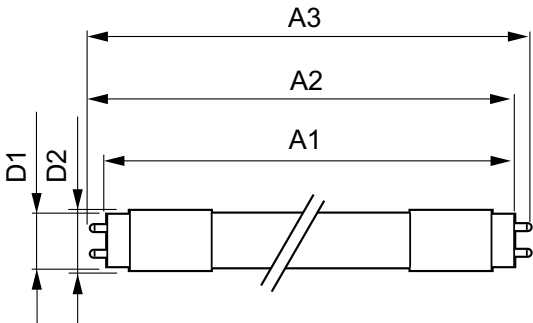
- Smart retrofit on existing EM ballast or direct mains
- Product lifetime up to 75,000 hours
- Easy to set up and control – with intuitive app
- Interact ready
- Reliable and secure wireless technology

Application

- Office, education, retail and healthcare
- Parking, industrial and warehouse

LEDtube Connected EM/mains T8

Dimensional drawing



Product	D1	D2	A1	A2	A3
MC LEDtube IA 1200mm UO 16W840 T8	25.8 mm	28 mm	1,198.2 mm	1,205.3 mm	1,212.4 mm
MC LEDtube IA 1200mm UO 16W865 T8	25.8 mm	28 mm	1,198.2 mm	1,205.3 mm	1,212.4 mm
MC LEDtube IA 1500mm UO 25W840 T8	25.8 mm	28 mm	1,498.7 mm	1,505.8 mm	1,512.9 mm
MC LEDtube IA 1500mm UO 25W865 T8	25.8 mm	28 mm	1,498.7 mm	1,505.8 mm	1,512.9 mm
MC LEDtube IA 600mm HO 7W840 T8	25.8 mm	28 mm	588.5 mm	595.5 mm	602.5 mm
MC LEDtube IA 600mm HO 7W865 T8	25.8 mm	28 mm	588.5 mm	595.5 mm	602.5 mm

General Information	
Cap-Base	G13
Switching Cycle	200,000
Nominal lifetime	60,000 hour(s)
Light Technical	
Beam Angle (Nom)	160 degree(s)
Color rendering index (CRI)	83
LLMF At End Of Nominal Lifetime (Nom)	70 %
Operating and Electrical	
Input Frequency	50 to 60 Hz
Line Frequency	50 to 60 Hz
Starting Time (Nom)	0.5 s
Controls and Dimming	
Dimmable	Wireless Dim
Mechanical and Housing	
Bulb Shape	T8
Approval and Application	
Ambient temperature range	-20 °C to 45 °C

Light Technical

Order Code	Full Product Name	Correlated Color Temperature (Nom)	Color Code	Luminous Flux
929002210402	MC LEDtube IA 1200mm UO 16W840 T8	4000 K	840	2,500 lm
929002210502	MC LEDtube IA 1200mm UO 16W865 T8	6500 K	865	2,500 lm
929002210802	MC LEDtube IA 1500mm UO 25W840 T8	4000 K	840	3,700 lm
929002210902	MC LEDtube IA 1500mm UO 25W865 T8	6500 K	865	3,700 lm
929002295302	MC LEDtube IA 600mm HO 7W840 T8	4000 K	840	1,050 lm
929002295402	MC LEDtube IA 600mm HO 7W865 T8	6500 K	865	1,050 lm

Operating and Electrical

Order Code	Full Product Name	Power Consumption
929002210402	MC LEDtube IA 1200mm UO 16W840 T8	16 W
929002210502	MC LEDtube IA 1200mm UO 16W865 T8	16 W
929002210802	MC LEDtube IA 1500mm UO 25W840 T8	25 W

Order Code	Full Product Name	Power Consumption
929002210902	MC LEDtube IA 1500mm UO 25W865 T8	25 W
929002295302	MC LEDtube IA 600mm HO 7W840 T8	7 W
929002295402	MC LEDtube IA 600mm HO 7W865 T8	7 W

Temperature

LEDtube Connected EM/mains T8

Order Code	Full Product Name	T-Case Maximum (Nom)
929002210402	MC LEDtube IA 1200mm UO 16W840 T8	50 °C
929002210502	MC LEDtube IA 1200mm UO 16W865 T8	50 °C
929002210802	MC LEDtube IA 1500mm UO 25W840 T8	65 °C

Order Code	Full Product Name	T-Case Maximum (Nom)
929002210902	MC LEDtube IA 1500mm UO 25W865 T8	65 °C
929002295302	MC LEDtube IA 600mm HO 7W840 T8	40 °C
929002295402	MC LEDtube IA 600mm HO 7W865 T8	40 °C

Approval and Application

Order Code	Full Product Name	Energy Consumption kWh/ 1000 h
929002210402	MC LEDtube IA 1200mm UO 16W840 T8	16 kWh
929002210502	MC LEDtube IA 1200mm UO 16W865 T8	16 kWh
929002210802	MC LEDtube IA 1500mm UO 25W840 T8	25 kWh
929002210902	MC LEDtube IA 1500mm UO 25W865 T8	25 kWh
929002295302	MC LEDtube IA 600mm HO 7W840 T8	7 kWh
929002295402	MC LEDtube IA 600mm HO 7W865 T8	7 kWh

