



# For an easy step into smart lighting

## LEDtube Connected EM/mains T8

Philips LEDtube Connected - smart retrofit LED T8 lamps that give you an easy and seamless way to upgrade to connected lighting. These Interact Ready LED tubes can be programmed to maximize energy savings, while providing wireless and automated light for your comfort and convenience. What's more, it is fully scalable and upgradable. If you want to enjoy additional benefits such as remote control or a management dashboard, you can simply keep the lamps you currently have installed and add a gateway to experience all the advantages of a cloud-based system. There's no better way to take lighting solutions to the next level.

### Benefits

- Smart sustainability thanks to advanced lighting control
- Easy connectivity with a whole new level of convenient installation
- Added comfort through personalization
- A future-proof solutions that is scalable and upgradable

### Features

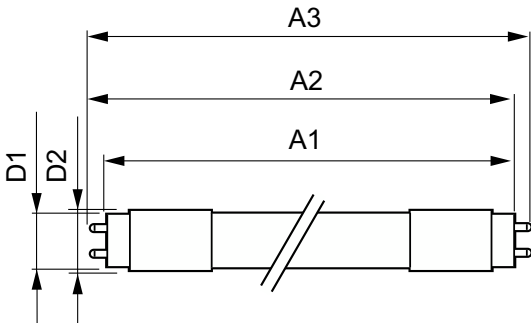
- Smart retrofit on existing EM ballast or direct mains
- Product lifetime up to 75,000 hours
- Easy to set up and control – with intuitive app
- Interact ready
- Reliable and secure wireless technology

### Application

- Office, education, retail and healthcare
- Parking, industrial and warehouse

# LEDtube Connected EM/mains T8

## Dimensional drawing



| Product                           | D1      | D2    | A1         | A2         | A3         |
|-----------------------------------|---------|-------|------------|------------|------------|
| MC LEDtube IA 1200mm UO 16W840 T8 | 25.8 mm | 28 mm | 1,198.2 mm | 1,205.3 mm | 1,212.4 mm |
| MC LEDtube IA 1200mm UO 16W865 T8 | 25.8 mm | 28 mm | 1,198.2 mm | 1,205.3 mm | 1,212.4 mm |
| MC LEDtube IA 1500mm UO 25W865 T8 | 25.8 mm | 28 mm | 1,498.7 mm | 1,505.8 mm | 1,512.9 mm |
| MC LEDtube IA 600mm HO 7W840 T8   | 25.8 mm | 28 mm | 588.5 mm   | 595.5 mm   | 602.5 mm   |
| MC LEDtube IA 600mm HO 7W865 T8   | 25.8 mm | 28 mm | 588.5 mm   | 595.5 mm   | 602.5 mm   |

| General Information                   |                 |
|---------------------------------------|-----------------|
| Cap-Base                              | G13             |
| Switching Cycle                       | 200,000         |
| Nominal lifetime                      | 60,000 hour(s)  |
| Light Technical                       |                 |
| Beam Angle (Nom)                      | 160 degree(s)   |
| Color rendering index (CRI)           | 83              |
| LLMF At End Of Nominal Lifetime (Nom) | 70 %            |
| Operating and Electrical              |                 |
| Input Frequency                       | 50 to 60 Hz     |
| Line Frequency                        | 50 to 60 Hz     |
| Starting Time (Nom)                   | 0.5 s           |
| Controls and Dimming                  |                 |
| Dimmable                              | Wireless Dim    |
| Mechanical and Housing                |                 |
| Bulb Shape                            | T8              |
| Approval and Application              |                 |
| Ambient temperature range             | -20 °C to 45 °C |

## Light Technical

| Order Code   | Full Product Name                 | Correlated Color Temperature (Nom) | Color Code | Luminous Flux |
|--------------|-----------------------------------|------------------------------------|------------|---------------|
| 929002210402 | MC LEDtube IA 1200mm UO 16W840 T8 | 4000 K                             | 840        | 2,500 lm      |
| 929002210502 | MC LEDtube IA 1200mm UO 16W865 T8 | 6500 K                             | 865        | 2,500 lm      |
| 929002210902 | MC LEDtube IA 1500mm UO 25W865 T8 | 6500 K                             | 865        | 3,700 lm      |
| 929002295302 | MC LEDtube IA 600mm HO 7W840 T8   | 4000 K                             | 840        | 1,050 lm      |
| 929002295402 | MC LEDtube IA 600mm HO 7W865 T8   | 6500 K                             | 865        | 1,050 lm      |

## Operating and Electrical

| Order Code   | Full Product Name                 | Power Consumption |
|--------------|-----------------------------------|-------------------|
| 929002210402 | MC LEDtube IA 1200mm UO 16W840 T8 | 16 W              |
| 929002210502 | MC LEDtube IA 1200mm UO 16W865 T8 | 16 W              |
| 929002210902 | MC LEDtube IA 1500mm UO 25W865 T8 | 25 W              |

| Order Code   | Full Product Name               | Power Consumption |
|--------------|---------------------------------|-------------------|
| 929002295302 | MC LEDtube IA 600mm HO 7W840 T8 | 7 W               |
| 929002295402 | MC LEDtube IA 600mm HO 7W865 T8 | 7 W               |

## Temperature

| Order Code   | Full Product Name                 | T-Case Maximum (Nom) |
|--------------|-----------------------------------|----------------------|
| 929002210402 | MC LEDtube IA 1200mm UO 16W840 T8 | 50 °C                |
| 929002210502 | MC LEDtube IA 1200mm UO 16W865 T8 | 50 °C                |
| 929002210902 | MC LEDtube IA 1500mm UO 25W865 T8 | 65 °C                |

| Order Code   | Full Product Name               | T-Case Maximum (Nom) |
|--------------|---------------------------------|----------------------|
| 929002295302 | MC LEDtube IA 600mm HO 7W840 T8 | 40 °C                |
| 929002295402 | MC LEDtube IA 600mm HO 7W865 T8 | 40 °C                |

# LEDtube Connected EM/mains T8

## Approval and Application

| Order Code   | Full Product Name                 | Energy Consumption kWh/ |
|--------------|-----------------------------------|-------------------------|
|              |                                   | 1000 h                  |
| 929002210402 | MC LEDtube IA 1200mm UO 16W840 T8 | 16 kWh                  |
| 929002210502 | MC LEDtube IA 1200mm UO 16W865 T8 | 16 kWh                  |
| 929002210902 | MC LEDtube IA 1500mm UO 25W865 T8 | 25 kWh                  |
| 929002295302 | MC LEDtube IA 600mm HO 7W840 T8   | 7 kWh                   |
| 929002295402 | MC LEDtube IA 600mm HO 7W865 T8   | 7 kWh                   |

