



# Reliable, high performance technology for extreme LED applications

## Xitanium LED drivers - 1-10V dimmable

Philips Xitanium Xtreme single current LED drivers bring performance, value for money, long life, and reliability to demanding outdoor and industrial LED lighting applications. Ideal for road lighting, urban street lighting, area and flood lighting, high-bay lighting and tunnels. They are designed to be easy to integrate into your luminaires. The light output is fully adjustable via 1 to 10 V analog dimming interface.

### Benefits

- Proven robustness, waterproof and reliability secure the lowest luminaire maintenance over time
- Extreme compact size, suitable for a wide range of luminaires
- Easy to design-in based on good thermal management and extra EMI margin

### Features

- Proven robust and reliable electronic driver design
- Achieving highest efficiencies based on advanced technology
- Suitable for Insulation Class I and Class II luminaires
- Long lifetime and five-year warranty
- Solid surge protection

## Xtanium LED drivers - 1-10V dimmable

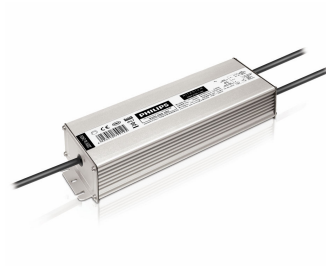
### Application

- Outdoor
- Industry

### Versions



9290014040 cable version IP67  
250W



LED Driver IP67 250W without  
connector

