



High Performance lighting solutions for Safer Highways

Skyline e-Way

Skyline e Way is a wide range of robust yet compact outdoor LED luminaires, designed with a focus on lighting wider roads with best of uniformities. Based on Signify's proven track record in road and urban LED lighting, the Skyline E Way luminaires benefit from numerous innovations to provide the ultimate experience for National Highways, utilities, contractors and citizens. Available in various optics and wattages, Skyline e Way provides a well dimensioned, efficient outdoor lighting solution ranging for various high road applications such as Highways and Expressways.

Benefits

- LED lighting solution that stands out in terms of efficiency, versatility, and connectivity
- Stands out as best in class in circular economy. Robust mechanical structure enabling high IP and IK ratings
- High Lumen packages makes a differentiated offering for different applications
- An option of using 7-Pin NEMA socket enabling easy access to the digital era of lighting with advanced lighting features that plan, monitor and control outdoor lighting networks.

Features

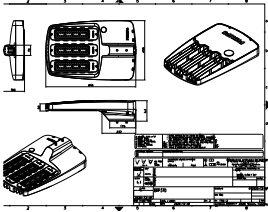
- LM6 Alloy, Robust pressure Die cast Aluminium housing.
- High Energy efficient solution (140 lm/W)
- High Impact resistance IK10
- Four different optics for different road widths

Skyline e-Way

Application

- Road and Street
- Security lighting

Dimensional drawing



Product details



Skyline eWay Street BRP370

General Information	
Driver included	Yes
Light Technical	
Luminaire light beam spread	130° x 88°
Light source color	757 cool white
Correlated Color Temperature (Nom)	5700 K
Color rendering index (CRI)	≥70
Luminous Efficacy (rated) (Nom)	138 lm/W
Optic type outdoor	Wide street optic
Controls and Dimming	
Dimmable	Yes
Mechanical and Housing	
Optical cover type	UV stabilized Polycarbonate cover
Housing Color	Dark gray
Mech. impact protection code	IK10
Ingress protection code	IP66
Approval and Application	
Ambient temperature range	+10 to +35 °C
Flammability mark	For mounting on normally flammable surfaces

Light Technical

Order Code	Full Product Name	Luminous Flux
919515814735	BRP370 LED455 CW SLC S1 PSU GR	45,500 lm
919515814736	BRP370 LED455 CW SLD S1 PSU GR	45,500 lm
919515814737	BRP370 LED455 CW SLG S1 PSU GR	45,500 lm
919515814738	BRP370 LED455 CW SLH S1 PSU GR	45,500 lm
919515814739	BRP370 LED414 CW SLC S1 PSU GR	41,400 lm
919515814740	BRP370 LED414 CW SLD S1 PSU GR	41,400 lm
919515814741	BRP370 LED414 CW SLG S1 PSU GR	41,400 lm
919515814742	BRP370 LED414 CW SLH S1 PSU GR	41,400 lm
919515814747	BRP370 LED455 CW SLC S1 PSU GR SPD	45,500 lm
919515814748	BRP370 LED455 CW SLD S1 PSU GR SPD	45,500 lm
919515814749	BRP370 LED455 CW SLG S1 PSU GR SPD	45,500 lm
919515814750	BRP370 LED455 CW SLH S1 PSU GR SPD	45,500 lm
919515814751	BRP370 LED414 CW SLC S1 PSU GR SPD	41,400 lm
919515814752	BRP370 LED414 CW SLD S1 PSU GR SPD	41,400 lm
919515814753	BRP370 LED414 CW SLG S1 PSU GR SPD	41,400 lm
919515814754	BRP370 LED414 CW SLH S1 PSU GR SPD	41,400 lm
919515814759	BRP370 LED455 CW SLC S1 PSU GR SPD CM	45,500 lm
919515814760	BRP370 LED455 CW SLD S1 PSU GR SPD CM	45,500 lm
919515814761	BRP370 LED455 CW SLG S1 PSU GR SPD CM	45,500 lm
919515814762	BRP370 LED455 CW SLH S1 PSU GR SPD CM	45,500 lm
919515814763	BRP370 LED414 CW SLC S1 PSU GR SPD CM	41,400 lm
919515814764	BRP370 LED414 CW SLD S1 PSU GR SPD CM	41,400 lm
919515814765	BRP370 LED414 CW SLG S1 PSU GR SPD CM	41,400 lm
919515814766	BRP370 LED414 CW SLH S1 PSU GR SPD CM	41,400 lm

Operating and Electrical

Order Code	Full Product Name	Power Consumption	Surge Protection (Common/Differential)
919515814735	BRP370 LED455 CW SLC S1 PSU GR	330 W	Surge protection level until 4 kV
919515814736	BRP370 LED455 CW SLD S1 PSU GR	330 W	Surge protection level until 4 kV
919515814737	BRP370 LED455 CW SLG S1 PSU GR	330 W	Surge protection level until 4 kV
919515814738	BRP370 LED455 CW SLH S1 PSU GR	330 W	Surge protection level until 4 kV
919515814739	BRP370 LED414 CW SLC S1 PSU GR	300 W	Surge protection level until 4 kV
919515814740	BRP370 LED414 CW SLD S1 PSU GR	300 W	Surge protection level until 4 kV
919515814741	BRP370 LED414 CW SLG S1 PSU GR	300 W	Surge protection level until 4 kV
919515814742	BRP370 LED414 CW SLH S1 PSU GR	300 W	Surge protection level until 4 kV
919515814747	BRP370 LED455 CW SLC S1 PSU GR SPD	330 W	Surge protection level until 10 kV
919515814748	BRP370 LED455 CW SLD S1 PSU GR SPD	330 W	Surge protection level until 10 kV
919515814749	BRP370 LED455 CW SLG S1 PSU GR SPD	330 W	Surge protection level until 10 kV
919515814750	BRP370 LED455 CW SLH S1 PSU GR SPD	330 W	Surge protection level until 10 kV
919515814751	BRP370 LED414 CW SLC S1 PSU GR SPD	300 W	Surge protection level until 10 kV
919515814752	BRP370 LED414 CW SLD S1 PSU GR SPD	300 W	Surge protection level until 10 kV
919515814753	BRP370 LED414 CW SLG S1 PSU GR SPD	300 W	Surge protection level until 10 kV
919515814754	BRP370 LED414 CW SLH S1 PSU GR SPD	300 W	Surge protection level until 10 kV
919515814759	BRP370 LED455 CW SLC S1 PSU GR SPD CM	330 W	Surge protection level until 10 kV
919515814760	BRP370 LED455 CW SLD S1 PSU GR SPD CM	330 W	Surge protection level until 10 kV
919515814761	BRP370 LED455 CW SLG S1 PSU GR SPD CM	330 W	Surge protection level until 10 kV
919515814762	BRP370 LED455 CW SLH S1 PSU GR SPD CM	330 W	Surge protection level until 10 kV

Order Code	Full Product Name	Power	Surge Protection
		Consumption	(Common/Differential)
919515814763	BRP370 LED414 CW SLC S1 PSU GR SPD CM	300 W	Surge protection level until 10 kV
919515814764	BRP370 LED414 CW SLD S1 PSU GR SPD CM	300 W	Surge protection level until 10 kV

Order Code	Full Product Name	Power	Surge Protection
		Consumption	(Common/Differential)
919515814765	BRP370 LED414 CW SLG S1 PSU GR SPD CM	300 W	Surge protection level until 10 kV
919515814766	BRP370 LED414 CW SLH S1 PSU GR SPD CM	300 W	Surge protection level until 10 kV

