



Compact Design..... Sleek yet Powerful

Pureline Slim EX

The PureLine Slim family of luminaires gives you compromise-free office illumination. It is a perfect solution for office application and general indoor area lighting with Sleek profile which helps Declutter the ceilings. The range brings together high-flux lighting with a homogeneous optical system without making any concessions on energy efficiency design.

Benefits

- Optimized lighting for office space: smooth and comfortable
- Dimmable and fixed output drivers
- Suitable for working and non-working areas
- Compliant with office lighting norms
- Sleek with minimal bezel
- Sustainability coupled with comfortable ambience
- Enhance Interiors

Pureline Slim EX

Features

- Superior efficacy >110 lm/W
- Suitable for Standalone & Continuous Mounting
- Up-Down lighting distribution
- Uniform & volumetric light distribution
- Comfortable Light - CRI of 80 to ensure better color rendering.
- Minimum Bezel
- Lifetime: 50,000 Hrs. @ Ta45°C, Safe and Reliable performance
- Higher power factor, lower peak currents, and higher efficiency.
- Flicker Free Lighting Effects - New light platform and optical design with ripple < 5%
- Lighting solution with high uniformity provides comfort in office lighting experience.
- Connected ready(Dali/interact) versions available for Smart offices/workspaces
- Multiple Lumen Packs & CCT - For different office applications and mounting heights

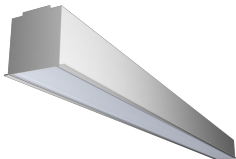
Application

- Modern Workspaces
- Meeting and Conference room
- Institutions
- Community Centers

Warnings and Safety

- Meant for Indoor Application Only. Should not be used in outdoor environment.

Versions



Recessed Pureline Slim 4ft

Pureline Slim EX

Dimensional drawing

