



Philips Ledinaire batten – For your everyday lighting jobs, easy to choose from the shelf and to install.

Ledinaire batten BN045C

The Ledinaire batten (BN045CC) range contains a selection of off-the-shelf batten LED luminaires that comes with the high Philips quality levels at a competitive price. Reliable, energy efficient and affordable. Ledinaire enables, simple and flexible installation, including BESA fixing option and an optional emergency pack accessory.

Benefits

- Philips quality and reliability
- Energy saving
- Compact design
- Easy and flexible installation

Features

- Emergency pack as optional accessory
- Mounting accessories included
- Available in 1.2m, 1.5m, 1.8m length
- BESA fixing possible

Ledinaire batten BN045C

Application

- General lighting
- Storage rooms
- Cove lighting

Versions

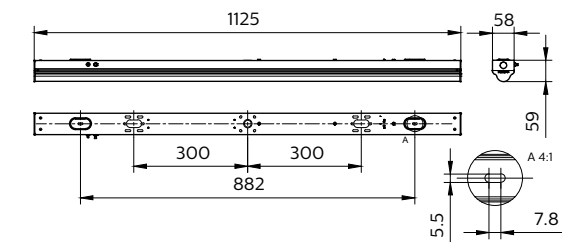
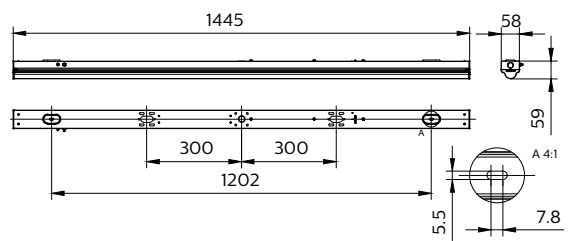
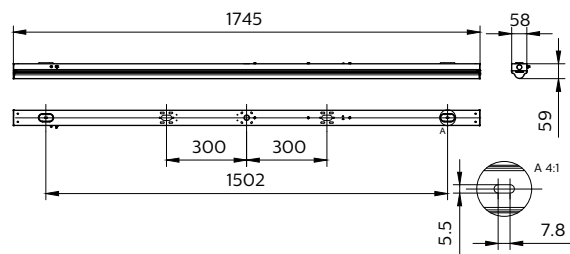


Ledinaire batten, BN045C

Ledinaire batten, BN045C

Ledinaire batten, BN045C

Dimensional drawing

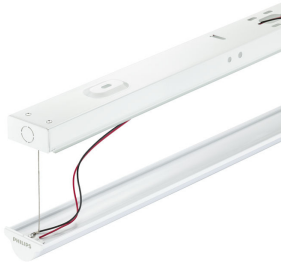


Ledinaire batten BN045C

Product details



Ledinaire batten, BN045C,
emergency indicator position



Ledinaire batten, BN045C, open
view



Ledinaire batten, BN045C,
emergency pack position



Ledinaire batten, BN045C, wiring



Ledinaire batten, BN045C,
emergency pack ready



Ledinaire batten, BN045C,
emergency pack position



Ledinaire batten, BN045C, back
view



Ledinaire batten, BN045C,
emergency indicator position

Ledinaire batten BN045C

General Information	
Driver included	Yes
Light source replaceable	No
Number of gear units	1 unit
Service tag	No
Light Technical	
Correlated Color Temperature (Nom)	4000 K
Color rendering index (CRI)	>80
Optic type	Beam angle 120°
Operating and Electrical	
Protection class IEC	Safety class I
Input Voltage	220-240 V
Line Frequency	50 or 60 Hz
Suitable for random switching	Yes
Controls and Dimming	
Dimmable	No
Mechanical and Housing	
Housing Color	White
Mech. impact protection code	IK02
Ingress protection code	IP20
Approval and Application	
Ambient temperature range	-20 to +40 °C
CE mark	Yes
ENEC mark	-
Flammability mark	For mounting on normally flammable surfaces
Glow-wire test	Temperature 650 °C, duration 30 s
Flickering value (PstLM) - Flickering value as per EN 61000-3-3	1
Stroboscopic effect visibility measure (SVM)	1.6
Initial Performance (IEC Compliant)	
Initial chromaticity	(0.38, 0.38) SDCM≤5
Luminous flux tolerance	+/-10%

Light Technical

Order Code	Full Product Name	Luminous Efficacy (rated) (Nom)	Luminous Flux
911401806385	BN045C 25S/840 PSU L1200	119 lm/W	2,500 lm
911401806485	BN045C 48S/840 PSU L1200	120 lm/W	4,800 lm
911401806785	BN045C 43S/840 PSU L1800	119 lm/W	4,300 lm
911401806885	BN045C 78S/840 PSU L1800	120 lm/W	7,800 lm
911401806585	BN045C 35S/840 PSU L1500	121 lm/W	3,500 lm
911401806685	BN045C 60S/840 PSU L1500	120 lm/W	6,000 lm

Operating and Electrical

Order Code	Full Product Name	Power Consumption
911401806385	BN045C 25S/840 PSU L1200	21 W
911401806485	BN045C 48S/840 PSU L1200	40 W
911401806785	BN045C 43S/840 PSU L1800	36 W

Order Code	Full Product Name	Power Consumption
911401806885	BN045C 78S/840 PSU L1800	65 W
911401806585	BN045C 35S/840 PSU L1500	29 W
911401806685	BN045C 60S/840 PSU L1500	50 W

Ledinaire batten BN045C

