



# Philips Ledinaire batten – For your everyday lighting jobs: simply unbox and install.

## Ledinaire batten BN045C

The Ledinaire batten (BN045CC) range contains a selection of off-the-shelf batten LED luminaires that come with high Philips quality levels at a competitive price. Reliable, energy-efficient and affordable. Ledinaire enables simple and flexible installation, including a BESA fixing option and an optional emergency pack accessory.

### Benefits

- Philips quality and reliability
- Energy saving
- Compact design
- Easy and flexible installation

### Features

- Emergency pack as an optional accessory
- Mounting accessories included
- Available in 1.2 m, 1.5 m, 1.8 m length
- BESA fixing possible

# Ledinaire batten BN045C

## Application

- General lighting
- Storage rooms
- Cove lighting

## Versions

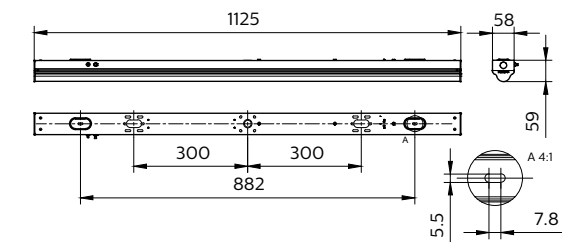
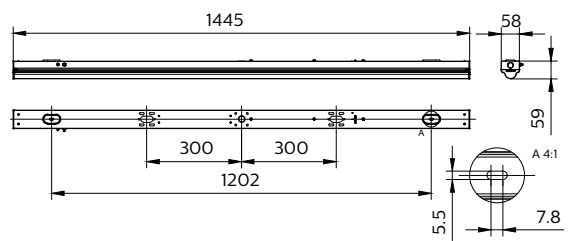
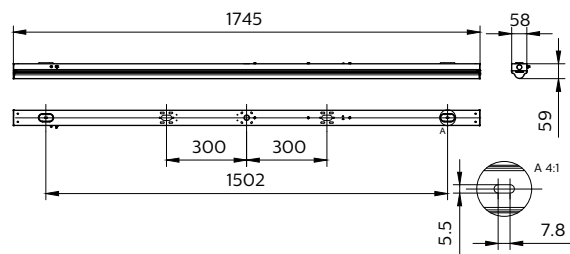


Ledinaire batten, BN045C

Ledinaire batten, BN045C

Ledinaire batten, BN045C

## Dimensional drawing

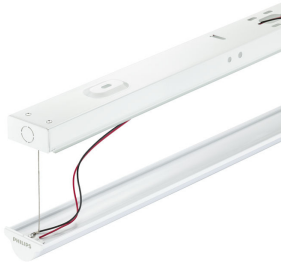


# Ledinaire batten BN045C

## Product details



Ledinaire batten, BN045C,  
emergency indicator position



Ledinaire batten, BN045C, open  
view



Ledinaire batten, BN045C,  
emergency pack position



Ledinaire batten, BN045C, wiring



Ledinaire batten, BN045C,  
emergency pack ready



Ledinaire batten, BN045C,  
emergency pack position



Ledinaire batten, BN045C, back  
view



Ledinaire batten, BN045C,  
emergency indicator position

## Ledinaire batten BN045C

### General Information

Driver included	Yes
Light source replaceable	No
Number of gear units	Unit
Service Tag	No

### Light Technical

Correlated Colour Temperature (Nom)	4000 K
Colour rendering index (CRI)	>80
Optic type	Beam angle 120°

### Operating and Electrical

Protection class IEC	Safety class I
Input Voltage	220-240 V
Line Frequency	50 or 60 Hz
Suitable for random switching	Yes

### Controls and Dimming

Dimmable	No
----------	----

### Mechanical and Housing

Housing Colour	White
Mech. impact protection code	IK02
Ingress protection code	IP20

### Approval and Application

Ambient temperature range	-20 to +40 °C
CE mark	Yes
ENEC mark	-
Flammability mark	For mounting on normally flammable surfaces
Glow-wire test	Temperature 650 °C, duration 30 s
Flickering value (PstLM)	1
Stroboscopic effect	1.6

### Initial Performance (IEC Compliant)

Initial chromaticity	(0.38, 0.38) SDCM≤5
Luminous flux tolerance	+/-10%

### Light Technical

Order Code	Full Product Name	Luminous efficacy (rated) (nom.)	Luminous Flux
96359799	BN045C 48S/840 PSU L1200	120 lm/W	4,800 lm
96363499	BN045C 78S/840 PSU L1800	120 lm/W	7,800 lm
96360399	BN045C 35S/840 PSU L1500	121 lm/W	3,500 lm
96361099	BN045C 60S/840 PSU L1500	120 lm/W	6,000 lm

### Operating and Electrical

Order Code	Full Product Name	Power Consumption
96359799	BN045C 48S/840 PSU L1200	40 W
96363499	BN045C 78S/840 PSU L1800	65 W

Order Code	Full Product Name	Power Consumption
96360399	BN045C 35S/840 PSU L1500	29 W
96361099	BN045C 60S/840 PSU L1500	50 W

## Ledinaire batten BN045C

