



Perfect for ESCO projects, DC Fit (UL Type C) LED lamps provide a solution for LED tube applications with a focus on better controllable and higher reliability performance.

DC-Fit (UL Type-C) T5

The DC-Fit (UL Type C) lamps are designed to be the perfect retrofit solution to move from traditional fluorescent lamps to energy saving LEDs. This lamp with DC driver has everything needed built into the lamp with proven energy savings, long life (up to 70k hours), better controllable performance and industry leading reliability features. All lamps in the DC-Fit family are double-ended to help simplify the installation. In addition, the DC lamps will have different lumen output with different dedicated DC drivers so that end users can have a comfortable environment with ideal light output.

DC-Fit (UL Type-C) T5

Benefits

- Choose the light level and energy savings that suit your needs
- Installation simplicity: Can be used with both shunted and un-shunted sockets
- Better controllable: have decent dimming performance with dedicated dimming DC drivers

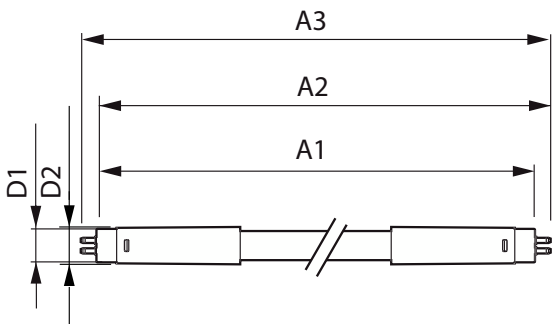
Features

- DLC listed and affordable Type C solution
- One DC TLED can have different lumen output with different dedicated DC drivers
- Glass tube with 200° illumination angle
- Lifetime delivered: Average life rating of 50,000 hours
- 5-year limited warranty (For more information on Philips' limited warranty please visit philips.com/warranties)

Application

- Warehouses
- Manufacturing
- Universities

Dimensional drawing



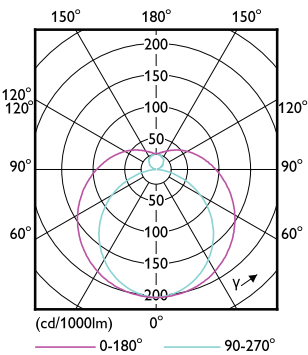
Product	D1	D2	A1	A2	A3
14T5/COR/46-840/DF21/G/DIM UL-C 25/1	15.3 mm	18.4 mm	1,147.8 mm	1,154.9 mm	1,162 mm
14T5/COR/46-850/DF21/G/DIM UL-C 25/1	15.3 mm	18.4 mm	1,147.8 mm	1,154.9 mm	1,162 mm

DC-Fit (UL Type-C) T5

General Information	
Cap-Base	G5
Switching Cycle	50,000
Nominal lifetime	50,000 hour(s)
Light Technical	
Beam Angle (Nom)	200 degree(s)
Color rendering index (CRI)	80
LLMF At End Of Nominal Lifetime (Nom)	70 %
Luminous Flux	2,100 lm
Operating and Electrical	
Input Frequency	~ Hz
Power Consumption	14 W
Starting Time (Nom)	0.5 s
Wattage Equivalent	54 W
Temperature	
T-Case Maximum (Nom)	65 °C
Controls and Dimming	
Dimmable	Only with specific dimmers
Mechanical and Housing	
Bulb Finish	Frosted
Bulb Shape	T5
Approval and Application	
Ambient temperature range	-20 to +45 °C

Light Technical

Order Code	Full Product Name	Correlated Color Temperature (Nom)	Color Code
929003651504	14T5/COR/46-840/DF21/G/DIM UL-C 25/1	4000 K	840
929003651604	14T5/COR/46-850/DF21/G/DIM UL-C 25/1	5000 K	850



DC-Fit (UL Type-C) T5

