



UniStrip G4 – Best in Class Linear LED Surface Mounted Luminaire for Exterior Fixed and Dynamic Architectural Lighting Applications

UniStrip G4

UniStrip G4 is a surface-mounted, exterior-rated LED luminaire that is designed for façade and outdoor architectural lighting applications. One family that fits all your needs, wall washing, grazing and also linear flood lighting. The robust mechanical and unique optical designs make it ideal for illuminating buildings facades, bridges, overpasses and any application that requires a linear lighting solution. Available in white, monochromatic colours, RGB, RGBW and tunable white and DMX control option available with up to 8 pixels (8IDs) to give architects and designers the freedom to explore a wide range of concepts and design with no limitations.

Benefits

- High and Low Power LEDs versions available
- Various spread lenses that fit all applications
- Adjustable brackets and through wiring for end-to-end connection

UniStrip G4

Features

- Six sub-families with power ranges from 3W to 120W
- DC and AC powered versions
- Narrow, medium, wide and asymmetric beams available
- Optional glare shields for more visual comfort

Application

- Bridges, Monuments, Facades
- Landscape
- Parks and Plazas

Warnings and Safety

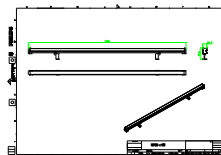
- For outdoor use only

Versions



159A3792

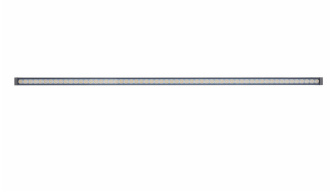
Dimensional drawing



UniStrip G4

Product details

159A3710 Detail Photo



159A3691 Detail Photo



159A3731 Detail Photo

