



TownTune Central Post Top - Extending the home feel onto the street

TownTune Central Post-Top

Designed to enhance existing and scalable urban spaces, the TownTune family offers all the latest lighting innovations in terms of performance, quality of light and connectivity. The family consists of four solutions: a Central Post Top (CPT), an Asymmetric Spigot Post Top / Side Entry version (ASY), a version with an extending Lyre post top bracket (Lyre), and a Central Post Top with a Conical Comfort Bowl (CCB). Each TownTune luminaire can be customized with a choice of different shapes on top of the housing, plus there's the option to add a decorative ring, which comes in two colors (excluding CCB). Design options that enable you to create your very own lighting signature and bring a distinctive identity to districts and cities. In addition, every luminaire in the TownTune family is uniquely identifiable, thanks to the Signify Service tag app. By simply scanning a QR code, placed inside the door of the mast or directly on the luminaire, you can instantly access the configuration of the luminaire. This makes maintenance and programming operations faster and easier and enables you to create your digital library of lighting assets and spare parts. TownTune also uses the LEDGINE-O lighting platform, ensuring you always have the right amount and direction of light on your street. Furthermore, thanks to being system ready (SR), TownTune is also future proof. A solution that's ready to be paired with both standalone and advanced control and lighting software applications such as Interact City.

TownTune Central Post-Top

Benefits

- LEDGINE-O platform for great performance, choice color temperatures and light distributions
- Optimized Total Cost of Ownership (L-Tune for flux tuning, standalone controls e.g., LumiStep, Dynadimmer, CLO (Constant Light output), LineSwitch)
- Ready to pair with advanced systems and software applications e.g., Interact City
- Long lifetime: 100,000 hours @L85 and higher
- Easy access to gear, vandal resistant (IK10), high ingress protection (IP66)

Features

- Simple design for easy integration into urban spaces, wide range of accessories for customization
- Suitable for new and retrofit installations
- Range of lumen packages (1200 to 12000 lm) and CCTs (2200K, 2700K, 3000K, 4000K)
- Dedicated bowl for visual comfort and comfortable lighting experiences
- Service tag for easy installation and maintenance

Application

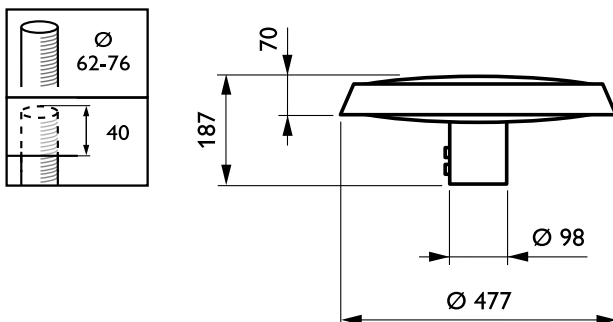
- Urban and residential areas
- Cycle paths, footpaths and pedestrian crossings
- City centers and squares
- Car parks

Versions



TownTune CPT BDP260

Dimensional drawing



TownTune Central Post-Top

General Information	
Driver included	Yes
Lamp family code	LED79
Light source replaceable	Yes
Number of gear units	1 unit
Service tag	Yes
Light Technical	
Light source color	830 warm white
Correlated Color Temperature (Nom)	3000 K
Color rendering index (CRI)	80
Upward light output ratio	0
Operating and Electrical	
Power Consumption	60 W
Surge Protection (Common/ Differential)	Standard surge protection level
Controls and Dimming	
Dimmable	Yes
Maximum dim level	10%
Mechanical and Housing	
Optical cover type	Polycarbonate bowl/cover UV- resistant
Housing Color	Gray
Mech. impact protection code	IK10
Ingress protection code	IP66
Standard tilt angle side entry	-
Standard tilt angle posttop	0°
Approval and Application	
CE mark	Yes
Flammability mark	For mounting on normally flammable surfaces
Product Data	
Product family code	BDP260

Light Technical

Order Code	Full Product Name	Luminaire light beam		
		spread	Luminous Flux	Optic type outdoor
912300024888	BDP260 LED79-4S/830 SR DM70 DGRMSP P7SRB	120° x 120°	5,120 lm	Distribution medium 70
912300024889	BDP260 LED79-4S/830 SR DS50 DGRMSP P7SRB	152° x 155°	5,520 lm	Distribution symmetrical 50
912300024890	BDP260 LED79-4S/830 SR DX50 DGRMSP P7SRB	17° - 5° x 132°	5,920 lm	Distribution extra wide 50

