



# TownTune Central Post Top - Extending the home feel onto the street

## TownTune Central Post-Top DTD

Designed to enhance existing and scalable urban spaces, the Philips TownTune family offers all the latest lighting innovations in terms of performance, quality of light and connectivity. The family consists of four solutions: a Central Post Top (CPT), an Asymmetric Spigot Post Top/Side Entry version (ASY), a version with an extending Lyre post top bracket (Lyre) and a Central Post Top with a Conical Comfort Bowl (CCB). Each TownTune luminaire can be customised with a choice of different shapes on top of the housing, plus there's the option to add a decorative ring, which comes in two colours (excluding CCB). Design options that enable you to create your very own lighting signature and bring a distinctive identity to districts and cities. In addition, every luminaire in the TownTune family is uniquely identifiable, thanks to the Signify Service tag app. By simply scanning a QR code, placed inside the door of the mast or directly on the luminaire, you can instantly access the configuration of the luminaire. This makes maintenance and programming operations faster and easier and enables you to create your own digital library of lighting assets and spare parts. TownTune also uses the Philips LEDGINE-O lighting platform, ensuring that you always have the right amount and direction of light on your street. Furthermore, thanks to being system-ready (SR), TownTune is also future-proof. A solution that's ready to be paired with both standalone and advanced control and lighting software applications, such as Interact City.

# TownTune Central Post-Top DTD

## Benefits

- LEDGINE-O platform for great performance, choice colour temperatures and light distributions
- Optimised Total Cost of Ownership (L-Tune for flux tuning, standalone controls e.g. LumiStep, Dynadimmer, CLO (Constant Light output), LineSwitch)
- Ready to pair with advanced systems and software applications e.g. Interact City
- Long lifetime: 100,000 hours @L85 and higher
- Easy access to gear, vandal-resistant (IK10), high ingress protection (IP66)

## Features

- Simple design for easy integration into urban spaces, wide range of accessories for customisation
- Suitable for new and retrofit installations
- Range of lumen packages (1,200 to 12,000 lm) and CCTs (2,200 K, 2,700 K, 3,000 K, 4,000 K)
- Dedicated bowl for visual comfort and comfortable lighting experiences
- Service tag for easy installation and maintenance.

## Application

- Urban and residential areas
- Cycle paths, footpaths and pedestrian crossings
- City centers and squares
- Car parks

## Versions

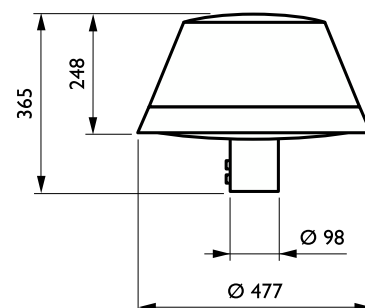
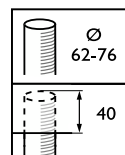
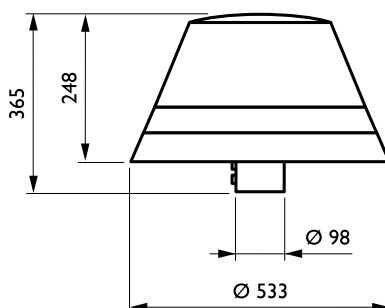
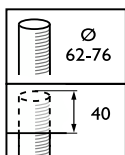


TownTune CPT DTD BDP263



TownTune CPT DTD DR GO BDP263

## Dimensional drawing



TownTune Central Post-Top DTD

General Information	
Driver included	Yes
Light source replaceable	Yes
Number of gear units	Unit
Service Tag	Yes
Light Technical	
Upwards light output ratio	0
Operating and Electrical	
Surge Protection (Common/ Differential)	Standard surge protection level
Controls and Dimming	
Dimmable	Yes
Maximum dim level	10%
Mechanical and Housing	
Optical cover type	Polycarbonate bowl/cover UV- resistant
Housing Colour	Grey
Mech. impact protection code	IK10
Ingress protection code	IP66
Standard tilt angle side entry	-
Standard tilt angle post-top	0°
Approval and Application	
CE mark	Yes
Flammability mark	For mounting on normally flammable surfaces
Over Time Performance (IEC Compliant)	
Driver failure rate at 5,000 hours	0.5 %
Product Data	
Product family code	BDP263

General Information

Order Code	Full Product Name	Lamp family code
49031700	BDP263 LED74-4S/830 DW10 CLO SRTB 62P	LED74
49027000	BDP263 LED30-4S/740 DW50 CLO-DDF1 62P DR	LED30

Light Technical (1/2)

Order Code	Full Product Name	Luminaire light beam spread	Light source colour	Correlated Colour Temperature (Nom)	Colour rendering index (CRI)
49031700	BDP263	52° - 7° x 151°	830	3000 K	80
	LED74-4S/830		warm		
	DW10 CLO SRTB		white		
	62P				

Order Code	Full Product Name	Luminaire light beam spread	Light source colour	Correlated Colour Temperature (Nom)	Colour rendering index (CRI)
49027000	BDP263	6° - 18° x 133°	740	4000 K	70
	LED30-4S/740		neutral		
	DW50 CLO-		white		
	DDF1 62P DR				

Light Technical (2/2)

# TownTune Central Post-Top DTD

Order Code	Full Product Name	Luminous Flux	Optic type outdoor
49031700	BDP263 LED74-4S/830 DW10 CLO SRTB 62P	5,180 lm	Distribution wide 10

Order Code	Full Product Name	Luminous Flux	Optic type outdoor
49027000	BDP263 LED30-4S/740 DW50 CLO-DDF1 62P DR	2,001 lm	Distribution wide 50

## Operating and Electrical

Order Code	Full Product Name	Power Consumption
49031700	BDP263 LED74-4S/830 DW10 CLO SRTB 62P	53 W

Order Code	Full Product Name	Power Consumption
49027000	BDP263 LED30-4S/740 DW50 CLO-DDF1 62P DR	18.6 W

