



Copenhagen LED Gen2: timeless design and future-ready technology

Copenhagen LED gen2 small

The original Copenhagen luminaire was co-designed with Copenhagen's Office of City Architecture in the 1960s with the aim of enhancing the aesthetic appeal of the city through lighting. This timeless luminaire design comes in two types: Copenhagen City LED Gen2 is for city and residential areas where light comfort is important; Copenhagen LED Gen2 delivers high performance for road lighting applications. The second generation of Copenhagen LED is available in a range of sizes, from mini to mega. This makes it suitable for any type of application while ensuring the dimensions of the luminaire and pole are well balanced, so every installation blends harmoniously into its surroundings. Various suspensions are available, allowing a variety of mounting options to provide maximum freedom during installation. Thanks to the built in LEDGINE-O engine, and the wide range of application-tailored optics, Copenhagen LED luminaires deliver the right amount of light and in the right direction on your street, enabling important energy savings. The luminaire is available with one or two Zhaga-D4i (ZD4i) System Ready (SR) sockets, which makes the luminaire future ready. This means Copenhagen LED Gen2 is ready to pair with advanced control and lighting software applications such as Interact, or sensors such as the Outdoor Sensor Bundle (OSB). And because the top SR socket is integrated into the canopy, it has no impact on the beautiful, clean design of the luminaire. Furthermore, every Copenhagen LED Gen2 BPS559, BRS561, BRS562 and BRS563 luminaire is uniquely identifiable, thanks to the Signify Service tag app. By simply scanning a QR code, placed inside the door of the mast or directly on the luminaire, you can instantly access the configuration of the luminaire. This makes maintenance and programming operations faster and easier and enables you to create a digital library of lighting assets and spare parts.

Copenhagen LED gen2 small

Benefits

- Excellent energy savings and light distribution thanks to LEDGINE-O high system efficacy and a large choice of optics
- Future-ready with Zhaga-D4i SR sockets to connect with Interact controls and sensors
- Service tag for easy installation and maintenance

Features

- 4 sizes (mini, small, large, and mega) to fit all mounting heights and possibilities: side entry, wall-arm, post-top, catenary, or central fixing
- 50+ choice of beams, and internal louvers to match all configurations
- Choice of color temperatures and color rendering for different ambiances: 2200K, 2700K, 3000K and 4000K
- Efficacy up to 167 lm/W
- Marine salt protection
- 5-year standard warranty (option to extend up to 10 years)

Application

- Traffic roads: motorways, highways (mega and large versions)
- Large streets and industrial areas (large)
- Small streets and car parks (small)
- Cycle paths, footpaths, pedestrian crossings (mini)

Specifications

Type	BRS561: Side entry	Dimming	PSU: Non-dimmable power supply unit,
	BPS561: ø60 mm post top		PSR: Dimmable driver with LineSwitch,
	BDS561: Center, 3/4" thread suspended		PSD: Dimmable Power supply unit with DALI interface (integrated),
	BSS561: Suspended/ Wire		PSA: Dimmable driver with AmpDim integrated,
Material	88% bio-based polyethylene canopy	Accessories	PSDD: Dimmable driver Dynadim integrated,
	silk screen printed, tempered front glass		PSD-SR: Power supply unit with DALI and SystemReady interface,
	88% recycled aluminum bracket and heatsink		PSM: Power supply unit with Coded Mains integrated
Installation	Side entry		
	ø60 mm post top	Ingress protection	IP66
	Center, 3/4" thread suspended		
	Suspended/ Wire	Certification	CE,
Luminous flux	2100 lm to 12000 lm system flux		ENEC+
Correlated color temperature - CCT	722, 727, 730, 740, 827, 830, 840	Serviceability class	Class A
Luminaire efficacy	up to 167 lm/W		

Copenhagen LED gen2 small

Versions



Small Copenhagen LED gen2 with side entry adaptor diam 48 mm with top (hidden) and bottom socket



Copenhagen City LED gen2 small BSS761

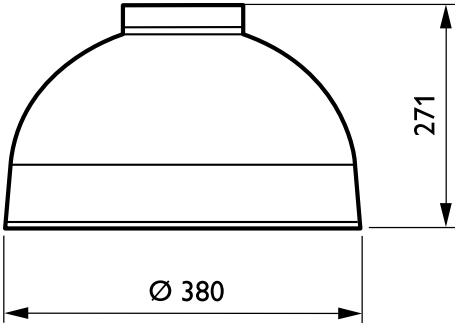
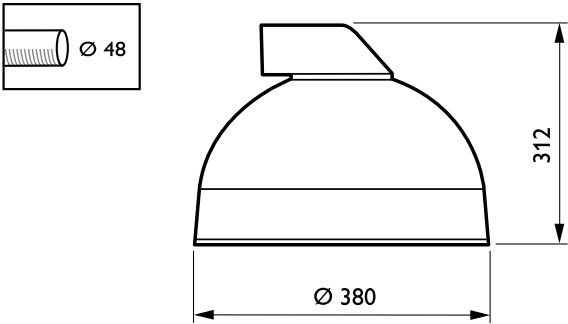
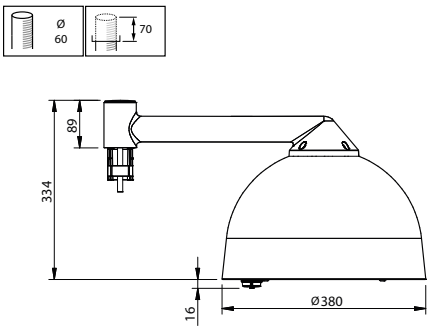
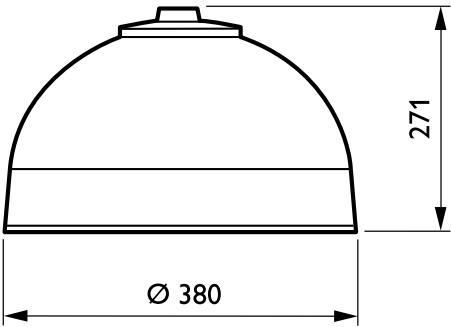


Copenhagen LED gen2 large centered



Small Copenhagen LED gen2 with side entry adaptor diam 48mm

Dimensional drawing



Copenhagen LED gen2 small

Product details



Small Copenhagen LED gen2 and
Copenhagen City LED gen2 Top
System Ready socket location



Small Copenhagen LED gen2 and
Copenhagen City LED gen2
CityTouch node location

General Information	
Driver included	Yes
Light source replaceable	Yes
Number of gear units	1 unit
Service tag	Yes
Light Technical	
Luminaire light beam spread	-
Controls and Dimming	
Dimmable	Yes
Mechanical and Housing	
Optical cover type	Flat glass
Mech. impact protection code	IK08
Ingress protection code	IP66
Standard tilt angle side entry	0°
Standard tilt angle posttop	0°
Approval and Application	
CE mark	Yes
Flammability mark	-

General Information

Order Code	Full Product Name	Lamp family code
919008633835	BRS561 LED32/830 II GL-DM50 SRTB C10K	LED32
919008636279	BSS561LED48/830IIGL-DSM2CLO-SRTBSTDEC10K	48S
919008636278	BDS561 LED40/830IIGL-DM31CLO-SRTSTDEC10K	40S
919008633837	BRS561LED32/830 II GL-DM50 CLOLS850 C10K	LED32
919008633838	BRS561 LED48/830II GL-DM50 CLOLS850 C10K	LED48
919008635240	BRS561 LED24/740 II DN10 GR CLO C10K FQQ	LED24
919008635241	BRS561 LED32/740 II DM11 GR CLO C10K FQQ	LED32
919008636723	BPS561 LED35/830II DM31 GR CLO-SRTB C10K	LED35
919008636724	BPS561 LED35/830 II DM31 GW CLO C10K 60P	LED35

Light Technical (1/2)

Order Code	Full Product Name	Light source	Correlated Color Temperature	Color rendering index	Luminous Flux
		color	(Nom)	(CRI)	
919008633835	BRS561 LED32/830 II GL-DM50 SRTB C10K	830	3000 K	80	2,816 lm
		warm			
		white			
919008636279	BSS561LED48/830IIGL-DSM2CLO-SRTBSTDEC10K	830	3000 K	80	4,418 lm
		warm			
		white			
919008636278	BDS561 LED40/830IIGL-DM31CLO-SRTSTDEC10K	830	3000 K	80	3,432 lm
		warm			
		white			

Order Code	Full Product Name	Light source	Correlated Color Temperature	Color rendering index	Luminous Flux
		color	(Nom)	(CRI)	
919008633837	BRS561LED32/830 II GL-DM50 CLOLS850 C10K	830	3000 K	80	2,728 lm
		warm			
		white			
919008633838	BRS561 LED48/830II GL-DM50 CLOLS850 C10K	830	3000 K	80	4,136 lm
		warm			
		white			
919008635240	BRS561 LED24/740 II DN10 GR CLO C10K FQQ	740	4000 K	70	2,088 lm
		neutral			
		white			

Copenhagen LED gen2 small

Order Code	Full Product Name	Light	Correlated	Color	Luminous
		source	Color	rendering	
		color	Temperature (Nom)	index (CRI)	Flux
919008635241	BRS561 LED32/740 II	740	4000 K	70	2,697 lm
	DM11 GR CLO C10K FQQ	neutral white			
919008636723	BPS561 LED35/830II	830	3000 K	80	2,992 lm
	DM31 GR CLO-SRTB C10K	warm white			

Order Code	Full Product Name	Light	Correlated	Color	Luminous
		source	Color	rendering	
		color	Temperature (Nom)	index (CRI)	Flux
919008636724	BPS561 LED35/830 II	830	3000 K	80	2,992 lm
	DM31 GW CLO C10K 60P	warm white			

Light Technical (2/2)

Order Code	Full Product Name	Optic type outdoor	Upward
			light output ratio
919008633835	BRS561 LED32/830 II GL-DM50 SRTB C10K	Distribution medium 50	0
919008636279	BSS561LED48/830IIGL-DSM2CLO-SRTBSTDEC10K	Distribution symmetrical medium 2	0
919008636278	BDS561 LED40/830IIGL-DM31CLO-SRTSTDEC10K	Distribution medium 31	0
919008633837	BRS561LED32/830 II GL-DM50 CLOLS850 C10K	Distribution medium 50	0
919008633838	BRS561 LED48/830II GL-DM50 CLOLS850 C10K	Distribution medium 50	0

Order Code	Full Product Name	Optic type outdoor	Upward
			light output ratio
919008635240	BRS561 LED24/740 II DN10 GR CLO C10K FQQ	Distribution narrow 10	0
919008635241	BRS561 LED32/740 II DM11 GR CLO C10K FQQ	Distribution medium 11	0
919008636723	BPS561 LED35/830II DM31 GR CLO-SRTB C10K	Distribution medium 31	0
919008636724	BPS561 LED35/830 II DM31 GW CLO C10K 60P	Distribution medium 31	0.5

Operating and Electrical

Order Code	Full Product Name	Power	Surge Protection
		Consumption	(Common/Differential)
919008633835	BRS561 LED32/830 II GL-DM50 SRTB C10K	25 W	Surge protection level until 6 kV differential mode and 6 kV common mode
919008636279	BSS561LED48/830IIGL-DSM2CLO-SRTBSTDEC10K	35 W	Surge protection level until 6 kV differential mode and 10 kV common mode
919008636278	BDS561 LED40/830IIGL-DM31CLO-SRTSTDEC10K	29.5 W	Surge protection level until 6 kV differential mode and 10 kV common mode
919008633837	BRS561LED32/830 II GL-DM50 CLOLS850 C10K	24.5 W	Surge protection level until 6 kV differential mode and 6 kV common mode
919008633838	BRS561 LED48/830II GL-DM50 CLOLS850 C10K	34.5 W	Surge protection level until 6 kV differential

Order Code	Full Product Name	Power	Surge Protection
		Consumption	(Common/Differential)
919008635240	BRS561 LED24/740 II DN10 GR CLO C10K FQQ	14.8 W	mode and 6 kV common mode
919008635241	BRS561 LED32/740 II DM11 GR CLO C10K FQQ	19.2 W	Surge protection level until 6 kV differential mode and 6 kV common mode
919008636723	BPS561 LED35/830II DM31 GR CLO-SRTB C10K	26.5 W	Surge protection level until 6 kV differential mode and 10 kV common mode
919008636724	BPS561 LED35/830 II DM31 GW CLO C10K 60P	26.5 W	Surge protection level until 6 kV differential mode and 10 kV common mode

Controls and Dimming

Copenhagen LED gen2 small

Order Code	Full Product Name	Maximum dim level
919008633835	BRS561 LED32/830 II GL-DM50 SRTB C10K	-
919008636279	BSS561LED48/830IIGL-DSM2CLO-SRTBSTDEC10K	10%
919008636278	BDS561 LED40/830IIGL-DM31CLO-SRTSTDEC10K	10%
919008633837	BRS561LED32/830 II GL-DM50 CLOLS850 C10K	-
919008633838	BRS561 LED48/830II GL-DM50 CLOLS850 C10K	-

Mechanical and Housing

Order Code	Full Product Name	Housing Color
919008633835	BRS561 LED32/830 II GL-DM50 SRTB C10K	White
919008636279	BSS561LED48/830IIGL-DSM2CLO-SRTBSTDEC10K	White
919008636278	BDS561 LED40/830IIGL-DM31CLO-SRTSTDEC10K	White
919008633837	BRS561LED32/830 II GL-DM50 CLOLS850 C10K	White
919008633838	BRS561 LED48/830II GL-DM50 CLOLS850 C10K	White

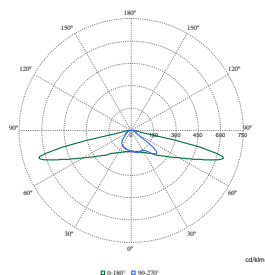
Over Time Performance (IEC Compliant)

Order Code	Full Product Name	Driver failure rate at 5000 h
919008633835	BRS561 LED32/830 II GL-DM50 SRTB C10K	0.01 %
919008636279	BSS561LED48/830IIGL-DSM2CLO-SRTBSTDEC10K	-
919008636278	BDS561 LED40/830IIGL-DM31CLO-SRTSTDEC10K	-
919008633837	BRS561LED32/830 II GL-DM50 CLOLS850 C10K	0.01 %
919008633838	BRS561 LED48/830II GL-DM50 CLOLS850 C10K	0.01 %

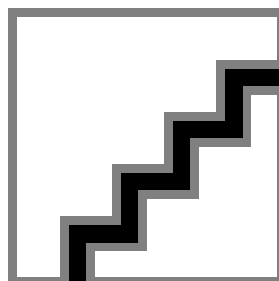
Product Data

Order Code	Full Product Name	Product family code
919008633835	BRS561 LED32/830 II GL-DM50 SRTB C10K	BRS561
919008636279	BSS561LED48/830IIGL-DSM2CLO-SRTBSTDEC10K	BSS561
919008636278	BDS561 LED40/830IIGL-DM31CLO-SRTSTDEC10K	BDS561
919008633837	BRS561LED32/830 II GL-DM50 CLOLS850 C10K	BRS561
919008633838	BRS561 LED48/830II GL-DM50 CLOLS850 C10K	BRS561

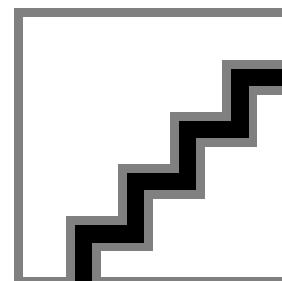
Polar Wide Diagrams



Polar Normal (separate) - BRS561I -
919008633837



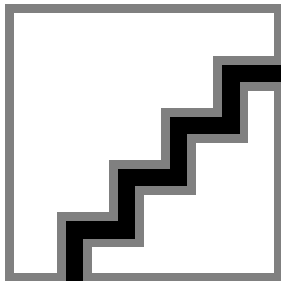
Polar Normal (separate) - BRS561I -
919008633838



Polar Normal (separate) - BRS561I -
919008635240

Copenhagen LED gen2 small

Polar Wide Diagrams



Polar Normal (separate) - BRS561I -
919008636723

