



# Copenhagen City LED Gen2: comfortable, future-ready light for your city

## Copenhagen City LED gen2 small

The original Copenhagen luminaire was co-designed with Copenhagen's Office of City Architecture in the 1960s with the aim of enhancing the aesthetic appeal of the city through lighting. This timeless luminaire design comes in two types: Copenhagen City LED Gen2 is for city and residential areas where light comfort is important; Copenhagen LED Gen2 delivers high performance for road lighting applications. The second generation of Copenhagen City LED offers a very comfortable light distribution with minimum glare, enabled by a round LED engine, which follows the shape of the luminaire. The opal canopy option provides even more ways to enhance the impact of lighting. It is also perfect for city branding as it can be used to create both static and dynamic uplight with any color of light. The luminaire comes with a variety of suspensions and optics, offering maximum freedom in lighting design for downtown and residential areas. A variety of dedicated brackets are also available to enable you to create a consistent lighting design across multiple applications. It is also available with one or two Zhaga-D4i (ZD4i) System Ready (SR) sockets, which makes the luminaire future ready. This means Copenhagen City LED Gen2 is ready to pair with advanced control and lighting software applications such as Interact, or sensors such as the Outdoor Sensor Bundle (OSB). And because the top SR socket is integrated into the canopy, it has no impact on the beautiful, clean design of the luminaire. Furthermore, every Copenhagen City LED Gen2 BRS761, BRS762 and BRS763 luminaire is uniquely identifiable, thanks to the Signify Service tag app. By simply scanning a QR code, placed inside the door of the mast or directly on the luminaire, you can instantly access the configuration of the luminaire. This makes maintenance and programming operations faster and easier and enables you to create a digital library of lighting assets and spare parts.

# Copenhagen City LED gen2 small

## Benefits

- Unique aesthetic design with perfect LED integration and excellent finishing
- Very comfortable lighting with lifted LED engine, round shape, and optional satin diffuser
- City branding possibilities via static and dynamic uplight options in choice of colors
- Future-ready with Zhaga-D4i SR sockets to connect with Interact controls and sensors
- Easy installation and maintenance enabled by Service tag
- One coherent design concept for luminaires and brackets

## Features

- 3 sizes to fit all mounting heights (small, large, and mega) and possibilities: side entry, post-top, catenary, or central fixing
- Choice of color temperatures and color rendering for different ambiances: 2200K, 2700K, 3000K and 4000K
- Efficacy up to 157 lm/W
- Marine salt protection
- 5-year standard warranty (option to extend up to 10 years)

## Application

- Major city roads (mega and large versions)
- Downtown, city center streets (large)
- Residential streets, car parks, pedestrian places, and parks (small)

## Specifications

Type	BRS761: Side entry
	BPS771: ø60 mm post top
	BDS761: Center, 3/4" thread suspended
	BSS761: Suspended/ Wire
Material	88% bio-based polyethylene canopy
	88% recycled aluminum bracket and heatsink
	silk screen printed, tempered front glass
Installation	Side entry
	ø60 mm post top
	Center, 3/4" thread suspended
	Suspended/ Wire
Luminous flux	1800 lm to 11000 lm
Correlated color temperature - CCT	722, 727, 730, 740, 827, 830, 840
Luminaire efficacy	up to 157 lm/W

Dimming	PSU: Non-dimmable power supply unit,
	PSR: Dimmable driver with LineSwitch,
	PSD: Dimmable Power supply unit with DALI interface (integrated),
	PSA: Dimmable driver with AmpDim integrated,
	PSDD: Dimmable driver Dynadim integrated,
	PSD-SR: Power supply unit with DALI and SystemReady interface,
	PSM: Power supply unit with Coded Mains integrated
Accessories	Back light cover
	Satin diffuser
Ingress protection	IP66
Certification	CE
	ENEC+
Serviceability class	Class A

# Copenhagen City LED gen2 small

## Versions



Copenhagen City LED gen2 small  
BSS761

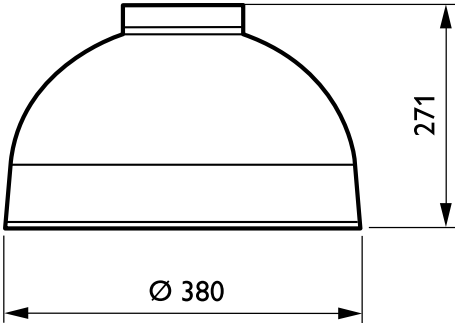
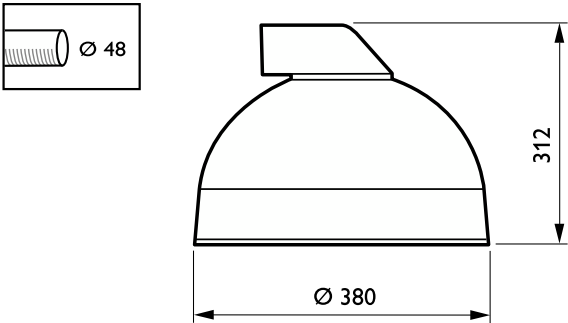
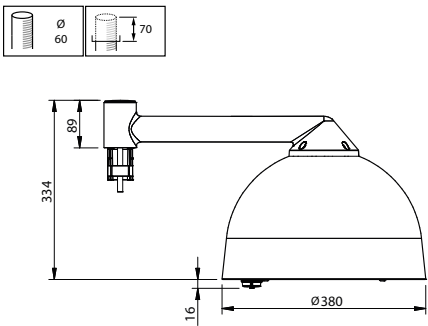
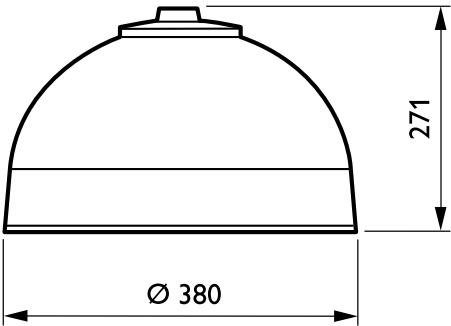


Copenhagen LED gen2 large  
centered



Small Copenhagen City LED gen2  
with side entry adaptor diam 48  
mm with top (hidden) and bottom  
socket

## Dimensional drawing



# Copenhagen City LED gen2 small

## Product details



Small Copenhagen LED gen2 and  
Copenhagen City LED gen2 Top  
System Ready socket location



Small Copenhagen City LED gen2  
glass serigraphy



Small Copenhagen LED gen2 and  
Copenhagen City LED gen2  
CityTouch node location



Small Copenhagen City LED gen2  
canopy and glass flush transition



Small Copenhagen City LED gen2  
glass serigraphy

Copenhagen City LED gen2 small

General Information	
Driver included	Yes
Light source replaceable	Yes
Number of gear units	1 unit
Service tag	Yes
Light Technical	
Luminaire light beam spread	-
Light source color	830 warm white
Correlated Color Temperature (Nom)	3000 K
Color rendering index (CRI)	80
Controls and Dimming	
Dimmable	Yes
Mechanical and Housing	
Optical cover type	Flat glass
Mech. impact protection code	IK08
Ingress protection code	IP66
Standard tilt angle side entry	0°
Standard tilt angle posttop	0°
Approval and Application	
CE mark	Yes
Flammability mark	-

General Information

Order Code	Full Product Name	Lamp family code
919008636277	BSS761 LED50/830IIGL-MDMCLO-SRTBSTDEC10K	50S
919008636276	BDS761 LED50/830II GL-MDM SRTB STDE C10K	50S
919008633848	BRS761 LED30/830II GL-MDW CLOLS850 C10K	LED30
919008633849	BRS761 LED50/830 II GL-MDW CLOLS850 C10K	LED50
919008634898	BRS761LED40/830II GL-MDW CLOLS850 C10K	LED40
919008635353	BRS761 LED40/830 II MDW GR CLOLS850 C10K	LED40
919008636732	BPS771 LED40/830II MDM CLO-SRTB C10K 60P	LED40
919008636733	BPS771 LED40/830 II MDM GW CLO C10K 60P	LED40
919008633846	BRS761 LED30/830 II GL-DK SRTB C10K	LED30

Light Technical

Order Code	Full Product Name	Luminous Flux	Optic type outdoor	Upward light output ratio
919008636277	BSS761 LED50/830IIGL-MDMCLO-SRTBSTDEC10K	4,116 lm	Metronomis distribution medium	0
919008636276	BDS761 LED50/830II GL-MDM SRTB STDE C10K	4,200 lm	Metronomis distribution medium	0
919008633848	BRS761 LED30/830II GL-MDW CLOLS850 C10K	2,436 lm	Metronomis distribution wide	0
919008633849	BRS761 LED50/830 II GL-MDW CLOLS850 C10K	4,116 lm	Metronomis distribution wide	0
919008634898	BRS761LED40/830II GL-MDW CLOLS850 C10K	3,154 lm	Metronomis distribution wide	0

Order Code	Full Product Name	Luminous Flux	Optic type outdoor	Upward light output ratio
919008635353	BRS761 LED40/830 II MDW GR CLOLS850 C10K	3,154 lm	Metronomis distribution wide	0
919008636732	BPS771 LED40/830II MDM CLO-SRTB C10K 60P	3,192 lm	Metronomis distribution medium	0
919008636733	BPS771 LED40/830 II MDM GW CLO C10K 60P	3,192 lm	Metronomis distribution medium	0.5
919008633846	BRS761 LED30/830 II GL-DK SRTB C10K	2,670 lm	Distribution wet road (DK)	0

Operating and Electrical

Copenhagen City LED gen2 small

Order Code	Full Product Name	Power	Surge Protection
		Consumption	(Common/Differential)
919008636277	BSS761 LED50/830IIGL-MDMCLO-SRTBSTDEC10K	37 W	Surge protection level
			until 6 kV differential
			mode and 10 kV common
			mode
919008636276	BDS761 LED50/830II GL-MDM SRTB STDE C10K	37.5 W	Surge protection level
			until 6 kV differential
			mode and 10 kV common
			mode
919008633848	BRS761 LED30/830II GL-MDW CLOLS850 C10K	23.5 W	Surge protection level
			until 6 kV differential
			mode and 6 kV common
			mode
919008633849	BRS761 LED50/830 II GL-MDW CLOLS850 C10K	36.5 W	Surge protection level
			until 6 kV differential
			mode and 6 kV common
			mode
919008634898	BRS761LED40/830II GL-MDW CLOLS850 C10K	31.5 W	Surge protection level
			until 6 kV differential
			mode and 6 kV common
			mode

Order Code	Full Product Name	Power	Surge Protection
		Consumption	(Common/Differential)
919008635353	BRS761 LED40/830 II MDW GR CLOLS850 C10K	31.5 W	mode and 6 kV common
			mode
			Surge protection level
			until 6 kV differential
919008636732	BPS771 LED40/830II MDM CLO-SRTB C10K 60P	31.5 W	mode and 6 kV common
			mode
			Surge protection level
			until 6 kV differential
919008636733	BPS771 LED40/830 II MDM GW CLO C10K 60P	31.5 W	mode and 10 kV common
			mode
			Surge protection level
			until 6 kV differential
919008636733	BPS771 LED40/830 II MDM GW CLO C10K 60P	31.5 W	mode and 10 kV common
			mode
			Surge protection level
			until 6 kV differential
919008633846	BRS761 LED30/830 II GL-DK SRTB C10K	24 W	mode and 6 kV common
			mode
			Surge protection level
			until 6 kV differential

Controls and Dimming

Order Code	Full Product Name	Maximum dim
		level
919008636277	BSS761 LED50/830IIGL-MDMCLO-SRTBSTDEC10K	10%
919008636276	BDS761 LED50/830II GL-MDM SRTB STDE C10K	10%
919008633848	BRS761 LED30/830II GL-MDW CLOLS850 C10K	50%
919008633849	BRS761 LED50/830 II GL-MDW CLOLS850 C10K	50%
919008634898	BRS761LED40/830II GL-MDW CLOLS850 C10K	-

Order Code	Full Product Name	Maximum dim
		level
919008635353	BRS761 LED40/830 II MDW GR CLOLS850 C10K	-
919008636732	BPS771 LED40/830II MDM CLO-SRTB C10K 60P	10%
919008636733	BPS771 LED40/830 II MDM GW CLO C10K 60P	10%
919008633846	BRS761 LED30/830 II GL-DK SRTB C10K	50%

Mechanical and Housing

Order Code	Full Product Name	Housing Color
919008636277	BSS761 LED50/830IIGL-MDMCLO-SRTBSTDEC10K	White
919008636276	BDS761 LED50/830II GL-MDM SRTB STDE C10K	White
919008633848	BRS761 LED30/830II GL-MDW CLOLS850 C10K	White
919008633849	BRS761 LED50/830 II GL-MDW CLOLS850 C10K	White
919008634898	BRS761LED40/830II GL-MDW CLOLS850 C10K	White

Order Code	Full Product Name	Housing Color
919008635353	BRS761 LED40/830 II MDW GR CLOLS850 C10K	Gray
919008636732	BPS771 LED40/830II MDM CLO-SRTB C10K 60P	Grey
919008636733	BPS771 LED40/830 II MDM GW CLO C10K 60P	Opal
919008633846	BRS761 LED30/830 II GL-DK SRTB C10K	White

Over Time Performance (IEC Compliant)

Order Code	Full Product Name	Driver failure rate
		at 5000 h
919008636277	BSS761 LED50/830IIGL-MDMCLO-SRTBSTDEC10K	-
919008636276	BDS761 LED50/830II GL-MDM SRTB STDE C10K	-
919008633848	BRS761 LED30/830II GL-MDW CLOLS850 C10K	0.01 %
919008633849	BRS761 LED50/830 II GL-MDW CLOLS850 C10K	0.01 %
919008634898	BRS761LED40/830II GL-MDW CLOLS850 C10K	-

Order Code	Full Product Name	Driver failure rate
		at 5000 h
919008635353	BRS761 LED40/830 II MDW GR CLOLS850 C10K	-
919008636732	BPS771 LED40/830II MDM CLO-SRTB C10K 60P	-
919008636733	BPS771 LED40/830 II MDM GW CLO C10K 60P	-
919008633846	BRS761 LED30/830 II GL-DK SRTB C10K	0.01 %

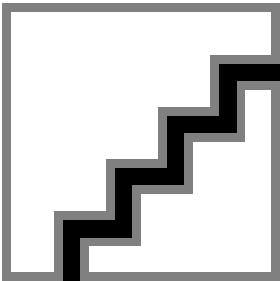
Product Data

# Copenhagen City LED gen2 small

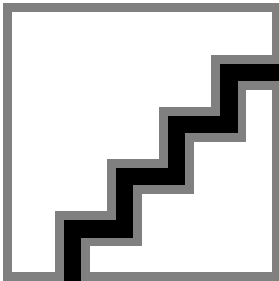
Order Code	Full Product Name	Product family code
919008636277	BSS761 LED50/830IIGL-MDMCLO-SRTBSTDEC10K	BSS761
919008636276	BDS761 LED50/830II GL-MDM SRTB STDE C10K	BDS761
919008633848	BRS761 LED30/830II GL-MDW CLOLS850 C10K	BRS761
919008633849	BRS761 LED50/830 II GL-MDW CLOLS850 C10K	BRS761
919008634898	BRS761LED40/830II GL-MDW CLOLS850 C10K	BRS761

Order Code	Full Product Name	Product family code
919008635353	BRS761 LED40/830 II MDW GR CLOLS850 C10K	BRS761
919008636732	BPS771 LED40/830II MDM CLO-SRTB C10K 60P	BPS771
919008636733	BPS771 LED40/830 II MDM GW CLO C10K 60P	BPS771
919008633846	BRS761 LED30/830 II GL-DK SRTB C10K	BRS761

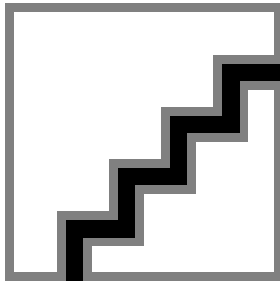
## Polar Wide Diagrams



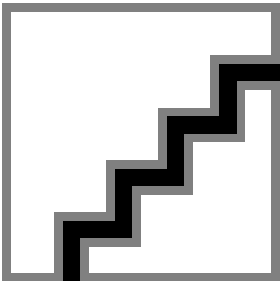
Polar Normal (separate) - BRS761I - 919008633849



Polar Normal (separate) - BRS761I - 919008633848



Polar Normal (separate) - BRS761I - 919008635353



Polar Normal (separate) - null - 919008636276

