



# Smart Post-top G3-BGP161

## Smart Post-top G3

Smart Post Top G3 inherits the classic look and style of the previous generation with improved system efficacy and light quality. The Smart Post Top G3 optimized optical design increases both horizontal and vertical uniformity. The highly efficient thermal system design ensures maximum heat transfer and longer LED service life. This reliable luminaire system operates well in both low and high temperature environments. It offers more than 11 years expected life, reducing maintenance frequency and cost (based on a 50,000 hour rated life and 12 hours operation per day). It provides a comfortable and safe atmosphere to gardens, residential areas, courtyards, side streets, squares, parks & playgrounds.

### Benefits

- Outstanding Lighting Performance
- Reliable Quality
- Environment Friendly

### Features

- SDCM $\leq$ 4 high uniformity, up to 92 lm/w, high system efficacy, up to 2500lm high brightness, CRI $>$ 70 shows true colour.
- 50K hours lifetime @L70B50 IP65, IK07, water and shock resistant Corrosion resistant painting, aluminum housing, anti UV polycarbonate optics.
- Compliant with the material restriction requirements of RoHS significant energy saving compared to conventional lighting.

### Application

- residential area, path way, park, etc.

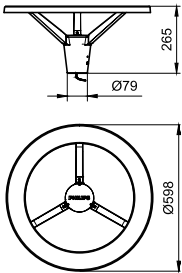
# Smart Post-top G3

## Versions



Smart Post top G3 BGP161

## Dimensional drawing



Smart Post-top G3

General Information	
Driver included	Yes
Lamp family code	-
Light source replaceable	Yes
Number of gear units	1 unit
Light Technical	
Luminaire light beam spread	-
Color rendering index (CRI)	70
Optic type outdoor	Symmetrical
Upward light output ratio	0
Operating and Electrical	
Surge Protection (Common/Differential)	4/2 kV kV
Controls and Dimming	
Dimmable	No
Maximum dim level	Not applicable
Mechanical and Housing	
Optical cover type	Acrylate cover and semi-matt high-reflective optic
Housing Color	Dark gray
Mech. impact protection code	IK07
Ingress protection code	IP65
Standard tilt angle side entry	-
Standard tilt angle posttop	-
Approval and Application	
CE mark	No
Flammability mark	-

Light Technical

Order Code	Full Product Name	Light source	Correlated Color	
		color	Temperature (Nom)	Luminous Flux
911401633703	BGP161 LED2500/NW PSU 220-240V 7043 IN	Neutral white	4000 K	2,500 lm
911401633903	BGP161 LED2300/WW PSU 220-240V 7043 IN	Warm white	3000 K	2,300 lm

Operating and Electrical

Order Code	Full Product Name	Power Consumption	Order Code	Full Product Name	Power Consumption
911401633703	BGP161 LED2500/NW PSU 220-240V 7043 IN	29 W	911401633903	BGP161 LED2300/WW PSU 220-240V 7043 IN	27 W

