



# TubePoint Gen 2: versatile, high performance and long-lasting tunnel lighting

## TubePoint gen2

Many tunnel authorities have outdated tunnel lighting installations that urgently need replacing, but have only a limited budget to achieve it. TubePoint Gen2 is the perfect solution. It's the cost-effective solution that's the result of years of experience in tunnel lighting and underpass lighting, combined with the latest technologies. With its modular design and state-of-the-art LED architecture, TubePoint Gen2 is a versatile, cost-effective luminaire that meets the most stringent tunnel lighting requirements. Manufactured from the highest-quality components that are specifically designed for tunnels, these tunnel luminaires promise a long lifetime, great performance and low maintenance costs. The lighting efficiency and wide choice of optics means the number of luminaires required for an installation can be reduced significantly compared with conventional solutions. And a high lumen per watt ratio at system level improves the total cost of ownership. TubePoint Gen2 is part of the TotalTunnel solution for complete tunnel lighting. A solution you can trust for versatile, high performance lighting in traffic tunnels.

### Benefits

- Versatile luminaire range suitable all types of traffic tunnels
- Economical LED solution for point source tunnel lighting schemes
- High performance and efficient
- Quick and easy mounting

# TubePoint gen2

## Features

- Wide range of optics and lumen packages
- Mounting and connectivity options
- Option of a remote driver
- Compatible with tunnel controls from and third parties
- Service tag: QR-based identification for maintenance, installation and spare part information

## Application

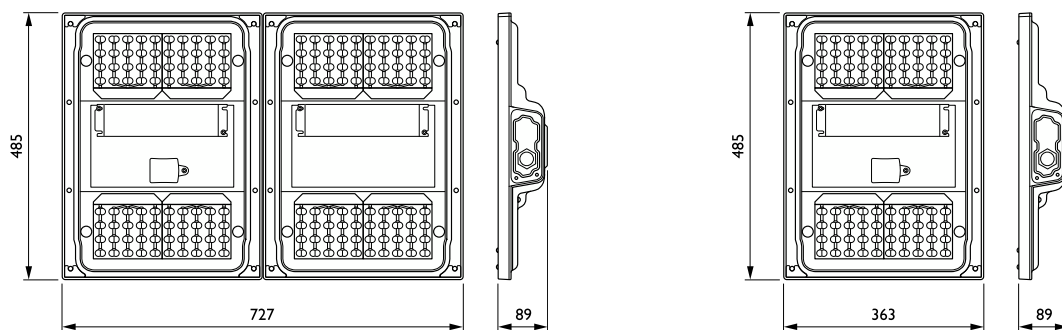
- Tunnel
- Underpass

## Versions



TubePoint GEN2-BGP236

## Dimensional drawing



Product details



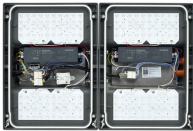
TubePoint\_GEN2-BGP235\_MB-DPP.TIF



TubePoint\_GEN2-BGP235-1DPP.TIF



TubePoint\_GEN2-BGP235\_MBQ-S-2DPP.TIF



TubePoint\_GEN2-BGP236-1DPP.TIF



TubePoint\_GEN2-BGP235\_MBQ\_M-DPP.TIF



TubePoint\_GEN2-BGP235\_BA\_SO-8DPP.TIF



TubePoint\_GEN2-BGP235\_MBQ\_S-DPP.TIF



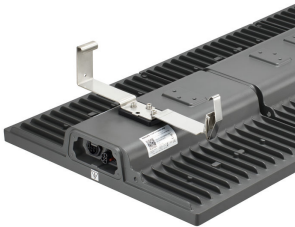
TubePoint\_GEN2-BGP235-2DPP.TIF

TubePoint gen2

Product details



TubePoint\_GEN2-BGP235\_BA-DPP.TIF



TubePoint\_GEN2-BGP235\_MBQ\_L-DPP.TIF



TubePoint\_GEN2-BGP235\_MBA-DPP.TIF



TubePoint\_GEN2-BGP236-2DPP.TIF

| General Information                        |  |
|--|--|
| Driver included                            | Yes  |
| Light source replaceable                   | Yes  |
| Service tag                                | Yes  |
| Light Technical                            |  |
| Luminaire light beam spread                | 101° x 158°  |
| Light source color                         | 740 neutral white  |
| Correlated Color Temperature (Nom)         | 4000 K   |
| Color rendering index (CRI)                | 70   |
| Optic type outdoor                         | Distribution<br>symmetrical<br>medium 11   |
| Upward light output ratio                  | 0  |
| Operating and Electrical                   |  |
| Surge Protection (Common/<br>Differential) | Surge protection<br>level until 6 kV<br>differential mode<br>and 6 kV common<br>mode |
| Controls and Dimming                       |  |
| Dimmable                                   | Yes  |
| Maximum dim level                          | 10%  |
| Mechanical and Housing                     |  |
| Optical cover type                         | Flat glass   |
| Housing Color                              | Dark gray  |
| Mech. impact protection code               | IK09   |
| Ingress protection code                    | IP66   |
| Standard tilt angle side entry             | 0°   |
| Standard tilt angle posttop                | -  |
| Approval and Application                   |  |
| CE mark                                    | Yes  |
| Flammability mark                          | For mounting on<br>normally<br>flammable<br>surfaces                                 |

General Information

| Order Code | Full Product Name                        | Lamp family code | Number of gear units |
|------------|--|------------------|----------------------|
| 48290900   | BGP235 LED30-4S/740 DSM11 D9 MIO-CIO MBQ | LED30            | 1 unit               |
| 48291600   | BGP235 LED50-4S/740 DSM11 D9 MIO-CIO MBQ | LED50            | 1 unit               |
| 48292300   | BGP235 LED90-4S/740 DSM11 D9 MIO-CIO MBQ | LED90            | 1 unit               |
| 48293000   | BGP235 LED120-4S/740 DSM11 D9 MIO-CIO MB | LED120           | 1 unit               |
| 48294700   | BGP235 LED180-4S/740 DSM11 D9 MIO-CIO MB | LED180           | 1 unit               |
| 48296100   | BGP236 LED360-4S/740 DSM11 D9 MIO-CIO MB | LED360           | 2 units              |

Light Technical

| Order Code | Full Product Name                        | Luminous Flux | Number of<br>light sources |
|------------|--|---------------|----------------------------|
| 48290900   | BGP235 LED30-4S/740 DSM11 D9 MIO-CIO MBQ | 2,520 lm      | 20                         |
| 48291600   | BGP235 LED50-4S/740 DSM11 D9 MIO-CIO MBQ | 4,200 lm      | 20                         |
| 48292300   | BGP235 LED90-4S/740 DSM11 D9 MIO-CIO MBQ | 7,470 lm      | 28                         |

| Order Code | Full Product Name                        | Luminous Flux | Number of<br>light sources |
|------------|--|---------------|----------------------------|
| 48293000   | BGP235 LED120-4S/740 DSM11 D9 MIO-CIO MB | 9,840 lm      | 40                         |
| 48294700   | BGP235 LED180-4S/740 DSM11 D9 MIO-CIO MB | 14,940 lm     | 56                         |
| 48296100   | BGP236 LED360-4S/740 DSM11 D9 MIO-CIO MB | 29,880 lm     | 112                        |

Operating and Electrical

TubePoint gen2

| Order Code | Full Product Name                        | Power Consumption |
|------------|--|-------------------|
| 48290900   | BGP235 LED30-4S/740 DSM11 D9 MIO-CIO MBQ | 18.8 W            |
| 48291600   | BGP235 LED50-4S/740 DSM11 D9 MIO-CIO MBQ | 31.5 W            |
| 48292300   | BGP235 LED90-4S/740 DSM11 D9 MIO-CIO MBQ | 53 W              |

| Order Code | Full Product Name                        | Power Consumption |
|------------|--|-------------------|
| 48293000   | BGP235 LED120-4S/740 DSM11 D9 MIO-CIO MB | 73 W              |
| 48294700   | BGP235 LED180-4S/740 DSM11 D9 MIO-CIO MB | 104 W             |
| 48296100   | BGP236 LED360-4S/740 DSM11 D9 MIO-CIO MB | 210 W             |

Over Time Performance (IEC Compliant)

| Order Code | Full Product Name                        | Driver failure rate at 5000 h |
|------------|--|-------------------------------|
| 48290900   | BGP235 LED30-4S/740 DSM11 D9 MIO-CIO MBQ | 0.53 %                        |
| 48291600   | BGP235 LED50-4S/740 DSM11 D9 MIO-CIO MBQ | 0.5 %                         |
| 48292300   | BGP235 LED90-4S/740 DSM11 D9 MIO-CIO MBQ | 0.5 %                         |

| Order Code | Full Product Name                        | Driver failure rate at 5000 h |
|------------|--|-------------------------------|
| 48293000   | BGP235 LED120-4S/740 DSM11 D9 MIO-CIO MB | 0.5 %                         |
| 48294700   | BGP235 LED180-4S/740 DSM11 D9 MIO-CIO MB | 0.5 %                         |
| 48296100   | BGP236 LED360-4S/740 DSM11 D9 MIO-CIO MB | 0.5 %                         |

Product Data

| Order Code | Full Product Name                        | Product family code |
|------------|--|---------------------|
| 48290900   | BGP235 LED30-4S/740 DSM11 D9 MIO-CIO MBQ | BGP235              |
| 48291600   | BGP235 LED50-4S/740 DSM11 D9 MIO-CIO MBQ | BGP235              |
| 48292300   | BGP235 LED90-4S/740 DSM11 D9 MIO-CIO MBQ | BGP235              |

| Order Code | Full Product Name                        | Product family code |
|------------|--|---------------------|
| 48293000   | BGP235 LED120-4S/740 DSM11 D9 MIO-CIO MB | BGP235              |
| 48294700   | BGP235 LED180-4S/740 DSM11 D9 MIO-CIO MB | BGP235              |
| 48296100   | BGP236 LED360-4S/740 DSM11 D9 MIO-CIO MB | BGP236              |

