



Dots that Ignite Creativity

UniDot G2

UniDot G2 is a surface mounted, exterior-rated and compact sized architectural LED direct view dot lighting luminaire that is designed for façade and outdoor lighting applications. The robust mechanical and unique optical covers make UniDot G2 ideal for building facades, bridges, theaters, amusement parks and recreational centers. Available in white, monochromatic colors, RGB, RGBW and tunable white. Three optical covers options and DMX control interface available to give architects and designers the freedom to explore a wide range of concepts and design with no limitations.

Benefits

- Low and High Power LEDs versions to fit all users needs.
- Three different optical covers that to fit all direct view applications.
- Robust Design and IP66 rating for outdoor use.
- Available in DMX512 control interface option.
- Through wiring for power and DMX data via IP67 connectors.

Features

- Three Sizes and Low power and High Power LEDs.
- Standard RGBW, RGB, 2700K, 3000K and 4000K.
- Optional 5000K, Monochromatic Colors and Tunable White.
- Clear flat, opal and diamond spherical optical covers options.

Application

- Bridges, Monuments, Facades
- Landscape
- Parks and Plazas

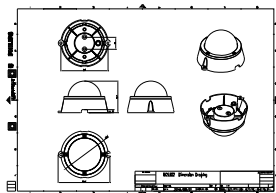
UniDot G2

Versions



BGS302 G2 OSC

Dimensional drawing



Product details

UniDot G2 detailed photo



UniDot G2 detailed photo



UniDot G2 detailed photo



UniDot G2 detailed photo



UniDot G2

Product details

UniDot G2 detailed photo



UniDot G2 detailed photo



UniDot G2 detailed photo



UniDot G2 detailed photo

