



# Dots that Ignite Creativity

## UniDot G2

UniDot G2 is a surface-mounted, exterior-rated and compact-sized architectural LED direct-view dot lighting luminaire that is designed for façade and outdoor lighting applications. The robust mechanical and unique optical covers make UniDot G2 ideal for building facades, bridges, theatres, amusement parks and recreational centres. Available in white, monochromatic colours, RGB, RGBW and tunable white. Three optical cover options and a DMX control interface is available to give architects and designers the freedom to explore a wide range of concepts and design with no limitations.

### Benefits

- Low and High Power LEDs versions to fit all users needs.
- Three different optical covers that to fit all direct view applications.
- Robust Design and IP66 rating for outdoor use.
- Available in DMX512 control interface option.
- Through wiring for power and DMX data via IP67 connectors.

### Features

- Three Sizes and Low power and High Power LEDs.
- Standard RGBW, RGB, 2700K, 3000K and 4000K.
- Optional 5000K, Monochromatic Colors and Tunable White.
- Clear flat, opal and diamond spherical optical covers options.

### Application

- Bridges, Monuments, Facades
- Landscape
- Parks and Plazas

UniDot G2

Versions



BGS301 G2 CFC

BGS300 G2 OSC

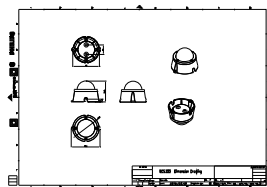
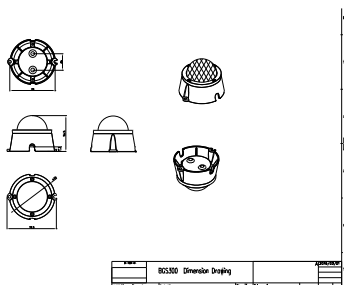
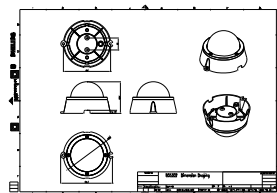
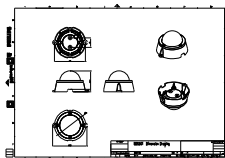
BGS300 G2 CFC

BGS301 G2 OSC



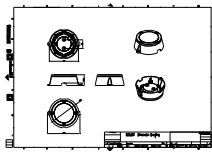
BGS302 G2 OSC

Dimensional drawing



UniDot G2

Dimensional drawing



Product details

UniDot G2 detailed photo



UniDot G2 detailed photo



UniDot G2 detailed photo



UniDot G2 detailed photo



UniDot G2 detailed photo



UniDot G2 detailed photo



UniDot G2 detailed photo



UniDot G2 detailed photo



General Information	
Driver included	No
Light source replaceable	No
Light Technical	
Color rendering index (CRI)	80
Controls and Dimming	
Dimmable	No
Mechanical and Housing	
Housing Color	Dark gray
Mech. impact protection code	IK06
Ingress protection code	IP66
Standard tilt angle side entry	-
Standard tilt angle posttop	-
Approval and Application	
CE mark	Yes
Flammability mark	For mounting on normally flammable surfaces

Light Technical

Order Code	Full Product Name	Luminaire	Light source color	Correlated Color Temperature (Nom)	Luminous Flux
		light beam spread			
911401752442	BGS301 G2 30LEDLP 27K 24V CFC	110°	Warm white	2700 K	413 lm
911401752342	BGS300 G2 12LEDLP 40K 24V OSC	130°	Neutral white	4000 K	192 lm
911401752242	BGS300 G2 12LEDLP 27K 24V DSC	-	Warm white	2700 K	210 lm
911401752302	BGS300 G2 12LEDLP 30K 24V DSC	-	Warm white	3000 K	210 lm
911401752322	BGS300 G2 12LEDLP 40K 24V CFC	110°	Neutral white	4000 K	218 lm
911401752522	BGS301 G2 30LEDLP 30K 24V OSC	150°	Warm white	3000 K	304 lm
911401752762	BGS302 G2 9LED 30K 24V OSC	160°	Warm white	3000 K	536 lm

Operating and Electrical

Order Code	Full Product Name	Power Consumption	Order Code	Full Product Name	Power Consumption
911401752442	BGS301 G2 30LEDLP 27K 24V CFC	6 W	911401752322	BGS300 G2 12LEDLP 40K 24V CFC	3 W
911401752342	BGS300 G2 12LEDLP 40K 24V OSC	3 W	911401752522	BGS301 G2 30LEDLP 30K 24V OSC	6 W
911401752242	BGS300 G2 12LEDLP 27K 24V DSC	3 W	911401752762	BGS302 G2 9LED 30K 24V OSC	9 W
911401752302	BGS300 G2 12LEDLP 30K 24V DSC	3 W			

Mechanical and Housing

Order Code	Full Product Name	Optical cover type	Order Code	Full Product Name	Optical cover type
911401752442	BGS301 G2 30LEDLP 27K 24V CFC	Polycarbonate bowl/cover flat	911401752322	BGS300 G2 12LEDLP 40K 24V CFC	Polycarbonate bowl/cover flat
911401752342	BGS300 G2 12LEDLP 40K 24V OSC	Polycarbonate bowl/cover spherical	911401752522	BGS301 G2 30LEDLP 30K 24V OSC	Polycarbonate bowl/cover spherical
911401752242	BGS300 G2 12LEDLP 27K 24V DSC	Polycarbonate bowl/cover spherical	911401752762	BGS302 G2 9LED 30K 24V OSC	Polycarbonate bowl/cover spherical
911401752302	BGS300 G2 12LEDLP 30K 24V DSC	Polycarbonate bowl/cover spherical			

