

StreetSaver – save costs, enjoy quality

StreetSaver gen2

In order to comply with EU regulations passed in 2015, municipalities need to replace all mercury-based lamps with lamps that are mercury-free. However, municipalities often have limited budgets to handle these huge replacement operations, especially in this period of economic austerity. At the same time, municipal authorities are facing tremendous pressure to save energy and to reduce light pollution of the night sky (many mercury installations have a transparent bowl, sending light everywhere). StreetSaver is an affordable, high-quality solution that enables municipalities to address all these issues by changing their mercury-based luminaires to LED systems – and importantly, it only requires a limited investment.

Benefits

- An affordable LED post-top solution with good lighting performance
- High product quality and robust design
- Good lifespan thanks to mid-power LED and 4KV surge protection

Features

- Dedicated LED design
- Aluminium housing and polycarbonate flat glass
- Connection directly at the bottom of the pole thanks to its 6 m cable

Application

- Parks and squares, pedestrian areas
- Commercial squares, parking areas
- Residential areas

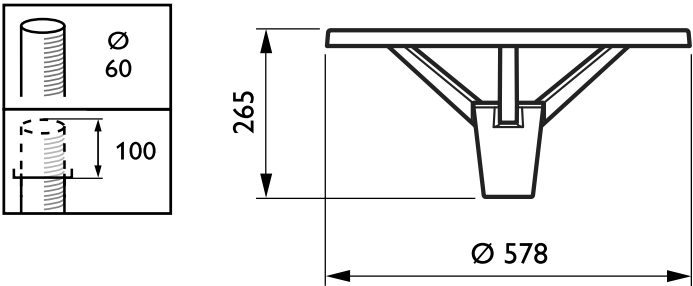
StreetSaver gen2

Versions



StreetSaver G2

Dimensional drawing



Product details

StreetSaver_G2-DPP.tif



General Information	
Driver included	Yes
Light source replaceable	No
Number of gear units	Unit
Light Technical	
Luminaire light beam spread	-
Light source colour	Neutral white
Optic type outdoor	Symmetrical
Upwards light output ratio	0
Operating and Electrical	
Power Consumption	27 W
Surge Protection (Common/ Differential)	Luminaire surge protection level up to 4 kV differential mode and 4 kV common mode
Controls and Dimming	
Dimmable	No
Mechanical and Housing	
Optical cover type	Acrylate micro- lens optic
Housing Colour	Aluminium and grey
Mech. impact protection code	IK08
Ingress protection code	IP65
Standard tilt angle side entry	0°
Standard tilt angle post-top	-
Approval and Application	
CE mark	Yes
Flammability mark	-

General Information

Order Code	Full Product Name	Lamp family code
911401663403	BPP008 LED-MP 740 PSU I GR 60P	LED25
911401663503	BPP008 LED-MP 830 PSU I GR 60P	LED23

Light Technical

Order Code	Full Product Name	Correlated Colour	Colour	Luminous Flux
		Temperature (Nom)	rendering index (CRI)	
911401663403	BPP008 LED-MP 740 PSU I GR 60P	4000 K	70	2,500 lm

Order Code	Full Product Name	Correlated Colour	Colour	Luminous Flux
		Temperature (Nom)	rendering index (CRI)	
911401663503	BPP008 LED-MP 830 PSU I GR 60P	3000 K	80	2,300 lm

