



# LED road lighting all-round player

## RoadFlair Gen2

RoadFlair Gen2 is brand new design road lighting product family, set to meet customers' all-round requirements, including high lumen efficacy for energy saving and sustainability, aesthetic design for nice shape and appearance, quality material and components for product reliability and long lifetime, professional optics for various applications fulfillment, dimming and system control interface for improving municipal operations and offering future-proof features. RoadFlair Gen2 competitive price would help on the acceleration of road lighting LED transformation, to a more sustainable society and smarter city.

### Benefits

- High lumen efficacy for energy saving.
- Robust quality and reliability.
- Professional optics for various road applications.
- Control interface for system compatibility.
- Economical LED alternative to conventional street lights.

### Features

- Four housing types covering up to 43Klm
- Typical 140lm/W
- 1-10V dimming interface
- 100Khrs lifetime
- 10kV or 15kV Surge protection Device

### Application

- Pedestrian Road
- Highway Road
- Residential Road
- Interchange

### Specifications

# RoadFlair Gen2

Material	Housing: die-cast aluminium
	Optic cover: polycarbonate
Light Source	3030 LED
Installation	Side entry 42-60mm
	Optional adjustable spigot
Luminous flux	System flux up to 43500lm
Correlated color temperature - CCT	5700K
	4000K
	3000K
	2700K
	2200K
Luminaire efficacy	4000K: 140lm/W

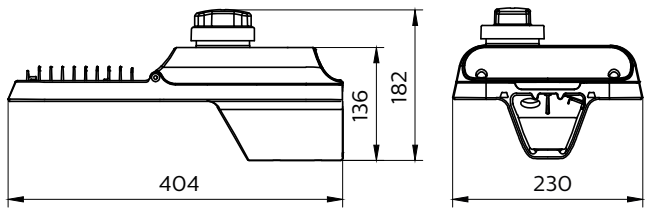
Color Rendering index - 70 CRI	
Power	up to 300W
Mains Voltage	220-240V / 50-60Hz
Control system input	1-10V
Dimming	PSR: 1-10V
	PSRD: 1-10V, Step dimming, AOC
Operating Temperature range	-40 to +50C Ta
Ingress protection	IP66
Certification	IECEE CB, CE, CQC, RCM

## Versions



RoadFlair Gen2 BRP49X

## Dimensional drawing



## Product details

RoadFlair Gen2 BRP49X



RoadFlair Gen2 BRP49X



## RoadFlair Gen2

### Product details

RoadFlair Gen2 BRP49X

