



For every project where light really matters, a 1:1 retrofit replacement

Coreline tempo medium

Coreline tempo medium delivers on the Coreline promise of innovative, easy to use and high quality floodlighting. A limited range of options makes it easy to find the best lux-for-lux replacement for conventional technologies and direct replacement of 100W and 150W HID lamps. The CoreLine tempo medium offers lumen packages for many different application areas as well as a choice of high-performance asymmetrical and symmetrical optics. Installing the LED flood lighting is made easy thanks to the U-shaped universal mounting bracket and the external quick 3-poles connector. It is an ideal floodlighting solution for outdoor environments such as industrial/commercial areas, parking lots, etc.

Benefits

- The same light levels as your existing conventional solution while saving on energy
- High quality tempo line flood lights
- Easy to use
- The option of asset management and/or wireless lighting control

Coreline tempo medium

Features

- Choice of Ledgine O platform light distributions, lumen packages from 8000lm up to 16000lm
- Seaside-resistant treatment and swimming pool protection options available
- Long lifetime of 100,000 hours, integrated surge protection, the option of an additional surge protection device, high impact resistance IK08, IP66
- Plug and play installation with 1m cable and IP66 connector, horizontal bracket for pole top mounting
- Ready to be connected to Interact City and Interact Sports recreational thanks to an SR socket

Application

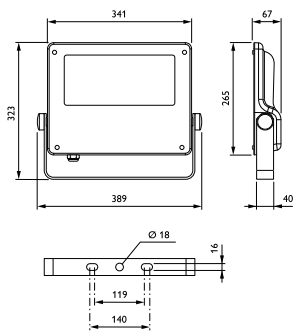
- Indoor multi-purpose gymnasiums and swimming pool
- Outdoor recreational sports fields e.g. basket courts, etc.
- Harbors, airports, parking lots

Versions



Coreline Tempo Medium-BVP125 Led80

Dimensional drawing



Coreline tempo medium

Product details

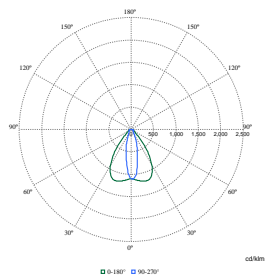


Coreline_Tempo_Medium-
BVP125-1DPP.TIF



Coreline_Tempo_Medium-
BVP125-2DPP.TIF

Polar Wide Diagrams



Polar Normal (separate) - BVP125I -
912300024004

