



# Philips UniFlood M gen2: A high power floodlight with true modularity

## UniFlood M G2

Philips UniFlood M gen2 is a cost-effective, exterior-rated architectural LED floodlight that's designed for façade, landscape and outdoor flood lighting applications. The robust, modular, rectangular design features highly-efficient optics, making it ideal for illuminating everything from multi-storey façades and bridges to landmarks and monuments. This LED floodlight is available in white, monochromatic colors, RGB, RGBW and tunable white. It comes with six different spread lenses ranging from narrow spot to wide flood and has DMX512/RDM control option. A truly modular floodlight that gives architects and designers the freedom to explore a wide range of concepts and designs with no limitations.

### Benefits

- Great design flexibility with individually tilting heads and controls
- Create the right lighting effect with six different spread lenses (narrow spot to wide flood)
- Easy to control with DMX512/RDM
- A robust choice that's IP66-rated for outdoor use

### Features

- Standard: RGBW, RGB, 2700K, 3000K and 4000K
- Optional 5000K, monochromatic colors and tunable white
- Flexible lengths from 155 to 569 mm
- Adjustable tilting angles for each head and for the whole set
- Steel brackets

# UniFlood M G2

## Application

- Bridges, Monuments, Facades
- Parks and Plazas
- Landscape

## Warnings and Safety

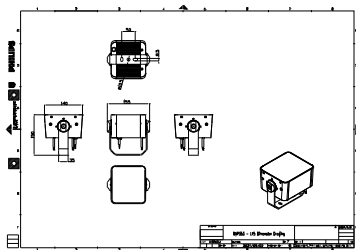
- For outdoor use only.

## Versions



UniFlood M Gen2

## Dimensional drawing



## UniFlood M G2

### General Information

Driver included	Yes
-----------------	-----

### Light Technical

Light source color	840 neutral white
Correlated Color Temperature (Nom)	4000 K
Color rendering index (CRI)	>80

### Operating and Electrical

Power Consumption	24 W
-------------------	------

### Controls and Dimming

Dimmable	No
----------	----

### Mechanical and Housing

Optical cover type	Clear glass
Housing Color	Dark gray
Mech. impact protection code	IK06
Ingress protection code	IP66

### Approval and Application

CE mark	Yes
Flammability mark	For mounting on normally flammable surfaces

### Light Technical

Order Code	Full Product Name	Luminous Flux
911401745443	BVP353 12LED 40K 220V L15 10	2,050 lm
911401745533	BVP353 12LED 40K 220V L15 15	2,150 lm
911401745623	BVP353 12LED 40K 220V L15 30	2,225 lm

