



Philips UniFlood M gen2: A high power floodlight with true modularity

UniFlood M G2

Philips UniFlood M gen2 is a cost-effective, exterior-rated architectural LED floodlight that's designed for façade, landscape and outdoor flood lighting applications. The robust, modular, rectangular design features highly-efficient optics, making it ideal for illuminating everything from multi-storey façades and bridges to landmarks and monuments. This LED floodlight is available in white, monochromatic colors, RGB, RGBW and tunable white. It comes with six different spread lenses ranging from narrow spot to wide flood and has DMX512/RDM control option. A truly modular floodlight that gives architects and designers the freedom to explore a wide range of concepts and designs with no limitations.

Benefits

- Great design flexibility with individually tilting heads and controls
- Create the right lighting effect with six different spread lenses (narrow spot to wide flood)
- Easy to control with DMX512/RDM
- A robust choice that's IP66-rated for outdoor use

Features

- Standard: RGBW, RGB, 2700K, 3000K and 4000K
- Optional 5000K, monochromatic colors and tunable white
- Flexible lengths from 155 to 569 mm
- Adjustable tilting angles for each head and for the whole set
- Steel brackets

UniFlood M G2

Application

- Bridges, Monuments, Facades
- Parks and Plazas
- Landscape

Warnings and Safety

- For outdoor use only.

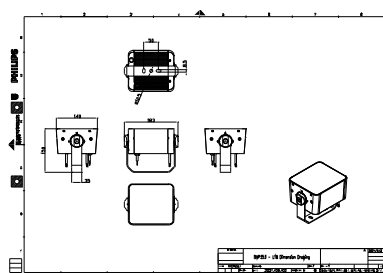
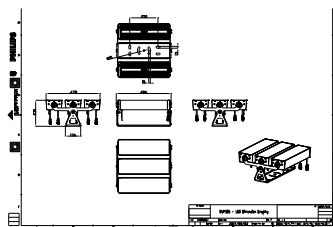
Versions



UniFlood M Gen2

UniFlood M Gen2

Dimensional drawing



UniFlood M G2

General Information	
Driver included	Yes
Light Technical	
Light source color	RGBW
Correlated Color Temperature (Nom)	-
Color rendering index (CRI)	>80
Controls and Dimming	
Dimmable	Yes
Mechanical and Housing	
Optical cover type	Clear glass
Housing Color	Dark gray
Mech. impact protection code	IK06
Ingress protection code	IP66
Approval and Application	
CE mark	Yes
Flammability mark	For mounting on normally flammable surfaces

Light Technical

Order Code	Full Product Name	Luminous Flux
911401746033	BVP353 16LED RGBWW 220V L18 30 DMX	1,550 lm
911401750263	BVP355 180LED RGBWW 220V L50 15 DMX	18,890 lm

Operating and Electrical

Order Code	Full Product Name	Power Consumption
911401746033	BVP353 16LED RGBWW 220V L18 30 DMX	30 W

Order Code	Full Product Name	Power Consumption
911401750263	BVP355 180LED RGBWW 220V L50 15 DMX	360 W

